

# PRODUCT CATALOG | 2021



---

IST DIVING SYSTEM



# COMPANY POLICY

## TERMS AND CONDITIONS

- Prices quoted in the Price List are Ex Works, Pomona, CA.
- All prices are subject to change without notice.
- Prices quoted at the time of order will not change even if the item becomes back ordered or closed out.
- A service charge of \$10.00 will be applied on orders less than \$100.00
- Open terms are available to accounts with approved and current credit status.
- Any shipment that is refused without authorization will be charged a 15% restocking fee plus return freight fees.
- All orders for accounts past due will become c.o.d. without notice and are subject to collection fees, court costs and attorney's fees if unpaid.
- Possession of the Price List does not constitute an offer to sell and we reserve the right to accept or reject all orders.

## SHIPPING POLICY

- All c.o.d. charges are the customer's responsibility.
- Merchandise will be shipped via IST's courier account.
- Each shipment should be counted and inspected upon arrival of the merchandise. In the case of a merchandise discrepancy, DO NOT SIGN the receipt and notify IST within 24 hours by phone.
- Customers are subject to pay any extra charges for expedited shipping services.

## FREIGHT ALLOWANCE

Free freight is allowed for shipments on all orders of \$850.00 or more within the contiguous USA (excluding Hawaii, Alaska and Puerto Rico). Free freight for Hawaii is allowed for orders of \$1,500 or more. Expedited shipment costs will be charged for the difference of regular ground shipment. Freight allowance is not valid with any discounts.

## PAYMENT

- Payments will always apply to the oldest invoice first.
- An interest rate of 2% per month (20% APR) will be applied on all past-due balances.
- A service and bank fee of \$50.00 will be charged on any NSF check.
- A credit card authorization form must be completed and approved before shipping out any credit card payment orders.
- For accounts with open terms: if paying by credit card, there will be an additional 5% fee.

## WARRANTY LIMITATION OF WARRANTY

The IST warranty does not cover damage resulting from accident, misuse, abuse, dirt, battery leakage, tampering or servicing performed or attempted by unauthorized service agencies or persons. For regulators and BCDs, the customer must show proof of purchase and the record of annual service in order to qualify for lifetime warranty.

- All IST products have ONE (1) YEAR WARRANTY.
- All technical (tech) BCDs, recreational BCDs and regulators have a limited lifetime warranty only if accompanied by proof

of purchase by the original owner.

- Masks, fins and snorkels are under a THREE (3) YEAR WARRANTY.
- Dealers must maintain a warranty repair facility.
- IST reserves the rights to repair or replace warranty merchandise.
- Warranty will be waived on items being used for rentals.

## RETURN POLICY

- All return or replacement items must be handled through the original point-of-purchase dealership.
- Merchandise will not be accepted without a Return Merchandise Authorization (RMA) number and is to be returned at the customer's expense. The RMA number can only be obtained for the following circumstances: (1) order entry error, (2) shipping error, (3) unused defective merchandise in the original packaging or (4) a qualified warranty return.
- An RMA number MUST be written on the exterior of the returned shipment box. A note describing the reason of return MUST accompany the shipment box.
- All original items must be returned in their original condition (including pairs and sets).
- The RMA Department is responsible for charging for replacement items and crediting and approving returned items
- Unauthorized returns will be automatically returned back to the customer with a 10% reshipping charge plus the additional freight cost or placed in storage at the customer's expense.
- Orders may not be cancelled after shipment has commenced. Authorized returns or exchanges of sellable merchandise will be subject to 15% restocking fee.

## INTERNET POLICY

- Direct catalog marketing/internet dealers must maintain a physical retail dive store.
- Discounts may not mark items down below the Minimum Advertised Price (MAP).
- IST products may be sold on eBay, subject to the following terms:
  - o Products must be listed at or above MAP
  - o Products cannot be listed as auction items
  - o Products cannot be listed as "make an offer"
  - o Seller name appearing on eBay must be the same as IST's registered dealer account
  - o MAP and eBay violations will receive a warning via mail or email to correct the violation; continued violation will result in the termination of merchandise supply
- All products featured in the dealer's catalog(s) or web page(s) must be stocked and displayed in the dealer's store.
- All IST website and catalog content is copyrighted; written consent from IST is required prior to use of any part of the copyrighted materials.
- Internet dealers must maintain minimum annual sales of \$10,000 in IST products.



# CONTENT

04	DOLPHIN TECH	92	NEOPRENE WETSUITS
05	COMMERCIAL WEIGHT BELT SYSTEMS	96	NEOPRENE WETSUIT SIZE CHARTS
09	HOOKS	97	NEOPRENE GEAR
10	TECHNICAL DIVING EQUIPMENT	100	DIVING GLOVES
26	TANK VALVES & ACCESSORIES	102	BOOTIES
27	REELS	105	BEACH SOCKS
28	ARROWS & DRIFT HOOKS	106	NEOPRENE ACCESSORIES
29	BUOY	108	DIVE SKINS
30	WRITING SLATES	111	APPAREL
32	REGULATOR ACCESSORIES	112	FREEDIVING EQUIPMENT
33	CLIPS & LANYARD	116	FREEDIVING GEAR
34	HOSES	124	BAGS
36	HOSE ACCESSORIES	130	POLE SPEARS
38	BCDS - RIPTIDE	131	TORCHES
42	BCDS	133	KNIVES
46	BCD ACCESSORIES	136	WRITING SLATES
47	PERSONAL FLOTATION DEVICE	138	DRY BOXES, SIGNALING DEVICES & ACCESSORIES
48	REGULATORS		
51	OCTOPUS	139	WEIGHT BELTS & ACCESSORIES
53	HARD GEAR TOOLS	140	CLIPS & LANYARD
56	GAUGES	141	REPLICA HELMETS & DIVE FLAGS
58	CHECKER	142	OTHER ACCESSORIES
59	CONNECTOR/ADAPTER	143	KIDS' GEAR
60	SPARE AIR	152	SWIMMING GEAR
62	TANK ACCESSORIES	153	IST PARTS DIAGRAM
63	DIVING MASKS	159	PRODUCT INDEX
75	SINGLE-LENS DIVING MASKS		
76	PRO EAR SERIES		
78	SPECIALTY MASKS		
79	MASK ACCESSORIES		
81	SNORKELS		
86	SNORKEL ACCESSORIES		
87	FINS		





Introducing Dolphin Tech's Commercial Diving Equipment. Dolphin Tech has made a major commitment to the ongoing research and development of commercial diving gear. After years in development, the first Commercial Diving phase has finally been deemed ready and worthy to carry IST's Dolphin Tech logo.

While all diving equipment, including recreational, requires strict adherences to extreme quality, Dolphin Tech's commercial gear undergoes an even more stringent design and manufacturing process, because your life and livelihood depends on it.

As a commercial diver, you know your profession is potentially dangerous—that's the nature of the beast. But while the conditions may be treacherous and unpredictable, you need to ensure that your equipment is a cut above—tough and predictably reliable, dive-in and dive-out. Now you can dive assured with Dolphin Tech's dependable line of Commercial Diving Equipment from IST.



The heart of the new bell harness is the specially-made, ultra-tough and flexible BP5 rubber plate. It is made from top-grade material with two added layers of tear-resistant nylon mesh as reinforcement. There are two sets of vertical cutouts along the center of the plate for the mounting of a bail-out gas supply if necessary (tank straps are available separately).



High-strength nylon webbing straps are secured to the rubber plate by stainless steel rivets.

## HHWB-BELT

### HHWB Rubber Belt



Top-grade rubber material with two added layers of tear-resistant nylon mesh as reinforcement.



Each waist strap comes with two 6 mm hook-up D-rings secured to the lower edge. A large 8 mm emergency hook-up D-ring is riveted to the top of the center strap, located in between the shoulder straps.



## HHBP-II

### Commercial Diving Bell Harness with Rubber Back Plate and Crotch Straps

#### FEATURES:

- Plate thickness: 0.32 in
- Plate reinforcement: nylon mesh (two layers)
- Plate buoyancy: negative
- Dry weight (rubber plate): 750 g (1.65 lb)
- Dry weight (complete): 2.75 kg (6.2 lb) (Size L)
- Webbing: 3.5 mm thick, 2 in wide nylon
- Rivet: stainless steel (36)
- Hardware: stainless steel
- Available sizes: XS-XL



HEAVY-DUTY

## HHBP-III

**FEATURES:**

- Ensures convenient and easy use
- Commercial diving bell harness with rubber back plate and crotch straps
- Marseille-style buckles on crotch straps provide convenient and easy use
- Plate thickness: 0.32 in
- Plate reinforcement: nylon mesh (two layers)
- Plate buoyancy: negative
- Dry weight (rubber plate): 750 g (1.65 lb)
- Dry weight (complete): 2.97 kg (6.7 lb) (Size L)
- Webbing: 3.5 mm thick, 2 in wide nylon
- Rivet: stainless steel (36)
- Hardware: stainless steel
- **Available sizes: S-3XL**



HEAVY-DUTY

## HHBP-V

### Commercial Diving Bell Harness

**FEATURES:**

- Webbing: 3.5 mm thick, 2 in wide nylon
- Rivet: stainless steel (32)
- Hardware: stainless steel
- **Available sizes: XS-XL**



## HHTB

### Heavy-Duty 1680D Nylon Tool Bag

- Can be attached to 2 in weight belt
- Tools not included



## MV1

### Magic Velcro Tape

- Velcro tape helps fix or extend webbing
- Size: 1.5 x 6.25 in
- **Available in black or red**



## COMMERCIAL DIVING WEIGHT BELT SYSTEM

### HHWB



#### HHWB-SS

- Shoulder straps for HHWB commercial diving weight belt
- Comes with four stainless steel hangers



#### HHWB-W05 HHWB-W08

- 5 lb or 8 lb lead weight for HHWB commercial diving weight belt



#### HHWB-BB

- Stainless steel buckle set for HHWB weight belt
- Comes with 4 x 5/8 in screws (HHWB-SCREW1) and two stainless steel plates



#### HHWB-SCREW

- Designed for IST HHWB commercial diving weight belt
- 2 in stainless steel screw and plate sets



#### HHWB-BELT

- Rubber belt of HHWB
- Top-grade rubber material with two added layers of tear-resistant nylon mesh for reinforcement



#### HEAVY-DUTY

### HHWB-25S HHWB-40S

#### FEATURES:

- Commercial diving weight belt with adjustable shoulder straps
- Comes with 5 x 5 lbs or 5 x 8 lbs environmental protection lead weight
- High-grade rubber weight belt with two added layers of tear-resistant nylon mesh as reinforcement

### MA001 / MA002 / MA003

#### 304 Grade Stainless Steel Shackles

- MA001: 5/8 in width
- MA002: 1/2 in width
- MA003: 3/8 in width



### SP31A / SP32A / SP33A

#### Stainless Steel Clip

- SP31A Double-End Clip (total length): 4 in
- SP32A Big Clip (total length): 4 in
- SP33A Small Clip (total length): 2.8 in



### SP37A / SP38A / SP39A / SP41A / SP42A

#### 316 Grade Stainless Steel Clip

- SP37A (total length): 3.4 in
- SP38A (total length): 3.1 in
- SP39A (total length): 3.42 in
- SP41A (total length): 4.25 in
- SP42A (total length): 4.3 in



SP37A

SP38A

SP39A

SP41A

SP42A





\*SBR-2 x2 Included



## SMB-21/N

Includes SBR-2 X 2

### FEATURES:

- Complete, modular sidemount bladder diving rig with 21 lbs of lift
- Includes bladder, inflator, harness, tank rigging, crotch straps, chest straps, back plate and bungees
- Bladder constructed of 1680D nylon with TPU coating
- From single-tank recreational to double-tank technical diving
- All metal parts constructed of corrosion-resistant stainless steel



\*SBR-2 x2 Included



## SMB-42/N

Includes SBR-2 X 2, SMB-Plate

### FEATURES:

- Complete, modular sidemount bladder diving rig with 42 lbs of lift
- Includes bladder, inflator, harness, tank rigging, crotch straps, chest straps, back plate and bungees
- Bladder constructed of 1680D nylon with TPU coating
- Works for various tank designs
- All metal parts constructed of corrosion-resistant stainless steel

## COMPLETE INTEGRATED SYSTEMS

For low-profile sidemount dives in the tightest spots such as wreck or cave exploration, IST's SMB-21 with 21 lbs of lift fits the profile perfectly. It is a complete integrated system that can be used for warm-water diving with wetsuits and aluminum tanks or cold-water diving with drysuits and steel tanks.

These sidemount bladders are the result of hundreds of sidemount dives in real-world conditions by experienced sidemount divers and cave explorers. IST's SMBs are the lowest profile streamlined buoyancy devices, which provide maximum balance and ideal trim control. With IST's bladders, you move through the water more easily and efficiently.

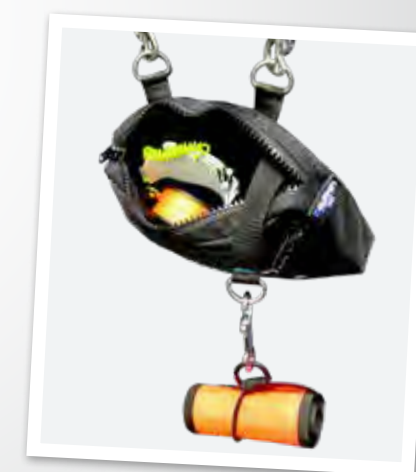
IST's SMBs are completely scalable from single-tank recreational to double-tank technical and have components that are even compatible with backmount diving. The minimalist harnesses also give more chest room for easier access to attachments and better maneuverability underwater. The SMB-21 is constructed of armor-like 1680 Denier Nylon with a coating of TPU fully shielding them from abrasions, tears and punctures.

## SMB-POUCH

Side-Mount Back Pouch

### FEATURES:

- Heavy-duty 1680D TPU-coated nylon fabric
- Comes with two stainless steel double-ended clips for side-mount divers
- Designed for one-handed operation
- Simple, roomy and durable



## SMB-BUNGEE/L

Bungee Cord for Sidemount Equipment

- Total length: 25.6 in

## SBR2

- For cylinder 7 in-7.25 in
- Webbing: 1 in nylon webbing
- Snaps and cylinder band: stainless steel

## SBR2-1

- For cylinder 5.25 in
- Webbing: 1 in nylon
- Snaps and cylinder band: stainless steel



## SMB-BUNGEE/S

Bungee Cord for Sidemount Equipment

- Total Length: 16.3 in





**Dolphin Tech** technical BCDs are completely modular. Unlike a traditional jacket-style BCD, each part can be replaced individually to modify the existing setup for a particular dive mission or simply personalize the equipment to fit a diver's particular preferences. Most importantly, this feature allows Dolphin Tech to offer different combinations of complete BCDs from a number of different components to suit as many divers as possible.

## JT-65H

### Stainless Steel Plate & Basic Harness

The JT-65H comes complete with all of the accessories on page 13.

1 3 4 5 6 7 8 9

## JT-65D

### Stainless Steel Plate & Deluxe Harness

The JT-65D comes complete with all of the accessories on page 13.

2 3 4 5 6 7 8 9

## 65LB DOUBLE BLADDER TWIN-TANK BCD

Complete BCD with JT-65 horseshoe-style air cell, BP3H twin-tank band sets. Available in two variations.

1 **HB-1**  
Basic Harness  
& Buckle Set



2 **HB-2**  
Deluxe Harness  
& Buckle Set



3 **HB-3**  
Crotch Strap Set



4 **HB-4**  
Back Plate Pad & Pouch



5 **HD-30H**  
BCD Handle



6 **JT-WP7 x 2**  
Tech BCD Weight Pockets



7 **BP3-H x 2**  
Twin-Tank Band Set  
7.25 or 8 in diameter.



8 **BP-3**  
Stainless Steel Back Plate



9 **JT-65**  
EXP. Double-bladder air cell, two IF-Tech standard tech BCD power inflators and two LP-BC low pressure hoses

The JT-65 is Dolphin Tech's flagship air cell and it is packed with abundant features. It has perimeter bungee cords which compress the air cell to maintain a hydrodynamic profile when not fully inflated. The outer shell is extremely tough and wear-resistant and gives the best protection under the most trying conditions. There are three sets of marine-grade steel grommets allowing the fine-tuning of tank-BCD-diver positioning. Convenient buoyancy control is provided through carefully positioned pull dumps.





SINGLE-TANK SINGLE-BLADDER BCD

Complete BCD with JT-30H or JT-40H doughnut style air cell, single-tank adapter and two harness options.

JT-40H / JT-30H

Stainless Steel Plate & Basic Harness

Components Include:

- 1
- 3
- 4
- 5
- 6
- 7
- 9 / 10
- 11
- 12



JT-41H / JT-31H

Aluminum Plate & Basic Harness

Components Include:

- 1
- 3
- 4
- 5
- 6
- 8
- 9 / 10
- 11
- 12

JT-40D / JT-30D

Stainless Steel Plate & Deluxe Harness

Components Include:

- 2
- 3
- 4
- 5
- 6
- 7
- 9 / 10
- 11
- 12

JT-41D / JT-31D

Aluminum Plate & Deluxe Harness

Components Include:

- 2
- 3
- 4
- 5
- 6
- 8
- 9 / 10
- 11
- 12



GREAT FOR TRAVEL

1 HB-1

Basic Harness & Buckle Set



2 HB-2

Deluxe Harness & Buckle Set



3 HB-3

Crotch Strap Set



4 HB-4

Back Plate Pad & Pouch



5 HD-30H

BCD Handle



6 JT-WP7 x 2

Tech BCD Weight Pockets



7 BP-3

Stainless Steel Back Plate



8 BP-4

Aluminum Back Plate



9 JT-30

Single-Bladder Air Cell (30 lbf), IF-Tech Standard Tech BCD Power Inflator & LP-BC Low-Pressure Hoses



10 JT-40

Single-Bladder Air Cell (40 lbf), IF-Tech Standard Tech BCD Power Inflator & LP-BC Low-Pressure Hoses



11 TAD-1

Single-Tank Adapter



12 BP-2x2

Tank Belt







## JT-30

### Single Bladder / Single-Tank Air Cell

A compact, doughnut-style air cell for use with a single, backmount tank, offering 30 lbf buoyancy in a streamlined design that's only slightly wider than the average diver's own shoulders. Low-pressure BC hose is included.



#### FEATURES:

- Style: circular doughnut
- Buoyancy capacity: 30 lbf
- Bladder material: 420D TPU-coated nylon
- Shell material: 1680D PU-coated ballistic nylon
- Inflator type: 16 in tech elbow
- Number of automatic pressure relief valves/pull dumps: 1 (at left waist side)
- Mounting grommets distance (C-C): 11 in
- Low-pressure BC hose included
- For single backmount tanks only 15 L (100 cu ft) internal volume
- Available colors: B, BK, R, Y



## TECH BCD COMPONENTS

## JT-65

### Double Bladder Twin-Tank Air Cell

This is Dolphin Tech's flagship air cell and it is packed with abundant features. It has perimeter bungee cords which compress the air cell to maintain a hydrodynamic profile when not fully inflated. The outer shell is extremely tough and wear-resistant and gives the best protection under the most trying conditions. There are three sets of marine-grade steel grommets allowing the fine-tuning of tank-BCD-diver positioning. Convenient buoyancy control is provided through carefully positioned pull dumps.

#### FEATURES:

- Style: horseshoe
- Buoyancy capacity: 65 lbf
- Primary bladder material: 210D TPU-coated nylon
- Redundant bladder material: 210D TPU-coated nylon
- Shell material: 1680D PU-coated ballistic nylon with bungee cord
- Primary inflator type: 16 in tech elbow
- Redundant inflator type: 19 in tech elbow
- Number of primary automatic pressure relief valves/pull dumps: 2 (at left waist and right shoulder, torso side)
- Number of redundant automatic pressure relief valves/pull dumps: 2 (at right waist and left shoulder, tank side)
- Mounting grommets distance (C-C): three sets in total, 11 in apart for each
- Primary and redundant low-pressure BC hoses included
- For twin backmount tank only (twin 15 L [100 cu ft] internal volume)



## JT-40

### Single-Bladder / Single-Tank Air Cell

A compact, doughnut-style air cell for use with a single, backmount tank, offering 40 lbf buoyancy in a streamlined design that's only slightly wider than the average diver's own shoulders. Low-pressure BC hose is included.

#### FEATURES:

- Style: circular doughnut
- Buoyancy capacity: 40 lbf
- Bladder material: 420D TPU-coated nylon
- Shell material: 1680D PU-coated ballistic nylon
- Inflator length: 16 in tech elbow
- Number of automatic pressure relief valves/pull dumps: 1 (at left waist side)
- Mounting grommets distance (C-C): 11 in
- Low-pressure BC hose included
- For single backmount tank only (15 L [100 cu ft] internal volume)





## BACKPACKS

Dolphin Tech also offers individual plate and harness backpack combos. Depending on your need, there are four models from which to choose.

### BASIC HARNESS BACKPACK

#### JTA-1

Basic Harness (HB-1)  
Aluminum Plate (BP-4)  
Crotch Strap (HB-3)

#### JTS-1

Basic Harness (HB-1)  
Stainless Steel Plate (BP-3)  
Crotch Strap (HB-3)



GREAT FOR TRAVEL



### DELUXE HARNESS BACKPACK

#### JTA-2

Deluxe Harness (HB-2)  
Aluminum Plate (BP-4)  
Crotch Strap (HB-3)

#### JTS-2

Deluxe Harness (HB-2)  
Stainless Steel Plate (BP-3)  
Crotch Strap (HB-3)

GREAT FOR TRAVEL



#### BP-3

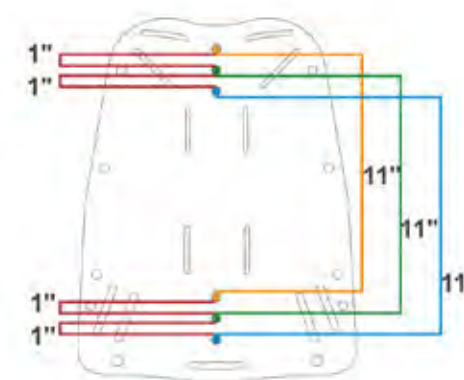
##### Stainless Steel Back Plate

- Material: 304 stainless steel
- Weight: 4.96 lb
- Mounting hole distance: 11 in
- Strong, rust-resistant
- Forms a part of the weighting system
- Pre-bent anatomical lower corners

#### BP-4

##### Aluminum Back Plate

- Material: 6061 aluminum
- Weight: 1.76 lb
- Mounting hole distance: 11 in
- Lightweight; excellent for traveling
- Strong, rust-resistant
- Forms a part of the weighting system
- Pre-bent anatomical lower corners



The back plate is the heart of a technical buoyancy compensator. It provides the vital connection between a diver and his scuba. Individually press-formed and all edges de-burred, DOLPHIN TECH back plates have 2 in slots for the harness and crotch strap as well as 10 perimeter holes for attaching additional equipment such as stage bottles and canister torch. There are three sets of tank mounting holes along the plate's center line, giving the diving easier options to fine-tune tank-to-torso position.





## HB-1 / HB-1L

### Basic Harness

As simple as it can be, Dolphin Tech's basic harness is reliable, easy to set up and has no superfluous parts to cause failure. It comes with four protective sleeves to cover the webbing where it is threaded through the back plate.

- **Total length: HB-1 140 in**
- **Total length: HB-1L 164 in (2 additional ft)**



## HBH-1

### Harness Hose Holder

The holder conveniently keeps the BCD inflator hose close to the diver's torso when used with the Basic Harness.



## HBW-2

### Waist Pad

Comfortable waist pads with webbing keepers and belt loops to securely fasten them to the Deluxe Harness.



## HB-2 / HB-2L

### Deluxe Harness

The Deluxe Harness gives the diver a more comfortable setup than the basic harness. It comes with anatomically shaped shoulder padding and in 2011, waist cushions were added to soften the pressure from the heavy cylinder(s). It also has twin hose holders and four protective sleeves to cover the webbing where it is threaded through the back plate. An extra set of pre-affixed chest D-rings provide additional attachment points for extra gear.

- **Total Length: HB-2 126 in**
- **Total Length: HB-2L 150 in (2 additional ft)**



## IF-TECH13/16/19/22

### K-Style BCD Power Inflator

This reliable, precision-engineered standard tech K-style inflator has no unnecessary parts in its elbow connection and keeps the BCD as streamlined as possible.

- **Available lengths: 13, 16, 19 and 22 in**





## BP-2/I

### Tank Strap

The strong, lightweight cam buckle can withstand rigorous use. Supple 2 in webbing makes threading an easy task. Fits tanks with a diameter between 6.9 in and 8 in.



## BP-2/S

### Steel Cam Buckle Cylinder Band

The cam buckle is made from 316 stainless steel. It is high in tensile strength and is resistant to corrosion. This cylinder band is a great upgrade from our standard BP2. Fits cylinders with an outside diameter between 7.25 in and 8 in.



## HB-3

### Crotch Strap

The soft crotch strap further secures and stabilizes your scuba rig to your torso without causing any discomfort.



## HB-4

### Plate Pouch

The pouch utilizes the back plate's recess to provide a convenient and streamlined storage space.



## HD-30H

### BCD Handle

This convenient feature makes attaching your tech BCD to the scuba cylinder an easy task and gives a carrying point for general handling of the BCD.



## HB4-SCREW SET

### Screw Set

This hardware is used to attach the plate pouch to the back plate. Each pack includes eight screw sets.



## JT-WP-2

### Back Plate Weight Pouch

This unique weight pouch can be attached to the back plate recess without adding bulk or hydrodynamic resistance. Stainless steel grommets are set 11 in apart. Velcro closure. Works with IST's environmentally-friendly weight bar W-04.



## JT-WP-5

### Tech BCD Weight Pouch

- Outer pouch material: Heavy-duty 1680D nylon
- Inner pouch material: 420D nylon
- Weight capacity: 4 kg (8.8 lb) per pocket
- Bolts to back plate horizontally



## JT-WP-8

### Tech BCD Weight Pouch

- Store extra weight on your belt while keeping it out of the way
- 2 kg (4.4 lb) capacity
- Non-diver releasable trim weight pouches for improved weight distribution and balance
- Open corners for drainage
- Heavy-duty 1680D nylon material will prolong usage



## JT-WP-4

### Tech BCD Weight Pouch

- Exterior material: Heavy duty 1680D nylon
- Interior material: 420D nylon
- Weight capacity: 4 kg (8.8 lb) per pocket



## JT-WP-7

### Tech BCD Weight Pouch

- Exterior material: Heavy duty 1680D nylon
- Interior material: 420D nylon
- Weight capacity: 7 kg (15.4 lb) per pocket



## W-04

### Back Plate Weight

- Designed to work with JT-WP2 back plate weight pouch, the lead weight is covered by plastic to prevent the heavy metal from leaking into the environment
- Weight: 1.4 kg (3 lb)



## TAD-1

### Low-Profile Single Tank Adapter

Made from strong, corrosion-resistant stainless steel, the Dolphin Tech Single Tank Adapter is essential when attaching a scuba cylinder to your tech BCD. It is low-profile but creates enough space for a fully inflated air cell to go between the cylinder and the plate. The square mounting holes assist in BCD assembling. Attachment hardware comes with two of each screw, a flat washer, split washer and wing nuts.

#### FEATURES:

- Weight (includes mounting hardware): 0.4 kg (0.88 lb)
- Material: 304 stainless steel
- Mounting hole distance: 11 in



## BP3H

### Twin Tank Band Set

#### FEATURES:

- Material: 304 stainless steel
- Band height: 2 in
- Band thickness: 1.5 mm
- Weight (includes mounting hardware): 1.57 kg (3.46 lb)
- Compatible with: Twin 7.25 in cylinders



## BP3H-8

### Twin Tank Band Set

#### FEATURES:

- Material: 304 stainless steel
- Band height: 1.61 in
- Band thickness: 1.5 mm
- Weight (includes mounting hardware): 1.3 kg (2.8 lb)
- Compatible with: Twin 8 in cylinders



\*The recommended manifold clearance (valves' center to center distance) is 215 mm +/- 3 mm. Each twin band set consists of two bands and stainless steel connecting hardware: two bolts (with welded-on end nut), two aircraft nuts, two winged nuts, two split washers and six washers.

## TSP-2

### Thigh Storage Pouch with Straps

#### FEATURES:

- Woven nylon canvas pocket holds additional dive gear
- Wide top webbing loop for attachment to dive belt
- Two thigh straps with quick-release buckles



## BB3

### Weight Belt Buckle

- 304 stainless steel buckle with secure three-slit design
- Fits 2-inch webbing



## DR-1 (Pair)

### Bent D-ring

- Material: 304 stainless steel
- Thickness: 0.2 in
- Bent angle: 25°
- TIG welded D-rings for superior strength
- Fits 2-inch webbing



## DR-2 (Pair)

### Flat D-ring

- Material: 304 stainless steel
- Thickness: 0.2 in
- TIG-welded D-rings for superior strength
- Fits 2-inch webbing



## DR-4 (Pair)

### Stainless Steel D-Ring

- Material: 304 stainless steel
- Thickness: DR-4 0.23 in
- TIG-welded D-rings for superior strength
- Fits 2-inch webbing



## DR-5

### Stainless Steel D-Ring

- Material: 304 stainless steel
- Thickness: DR-5 0.31 in
- TIG-welded D-rings for superior strength
- Fits 2-inch webbing



## DR-6

### Stainless Steel Webbing Keeper with Sliding Bar

- 316 grade stainless steel
- Ring dimensions: 2.45 x 1.5 in with 4.75-mm thick wire
- Sliding bar dimensions: 2.75 in with 9.5-mm thick wire
- Different from traditional webbing keepers, the unique sliding bar makes it much easier to adjust to all kinds of webbings
- Fits 2-inch webbing



## DR-7

### Stainless Steel Ring

- Multipurpose 316 stainless steel ring
- 2.45 in in diameter with 6-mm thick wire
- Fits 2-inch webbing



## WK-4 (4PC)

### Webbing Keeper

- WK-4 is designed to stop the webbing from moving
- Each has a 0.79 x 2 in wide slots. It has the strength to hold the harness and a heavy equipment load
- Fits 2-inch webbing



## WK-5

### Webbing Keeper

- 304-grade stainless webbing keeper
- Product dimensions: 1.8 x 2.6 in
- Fits 2-inch webbing



**TK-1****Tank Knob****FEATURES:**

- Material: rubber
- Available in black or green to signify nitrox/oxygen tanks

**YK03****DIN-to-Yoke 1st Stage Converter****FEATURES:**

- Material: chrome-plated brass
- Compatible with: G5/8 200 bar or G5/8 300 bar DIN first stage connector
- Maximum working pressure: 232 bar (3365 psi)

**YK-06****Quick-Connect YOKE with Isolation Cross Bar****DC-2P****1st Stage DIN Dust Cover**

Available plastic color: BK

**YK04****DIN-to-Yoke Tank Valve Converter****FEATURES:**

- Material: chrome-plated brass
- Compatible with: 200 bar DIN tank valve with female G5/8 thread

**YK-05****Quick-Connect YOKE****YK07****YOKE Tank Filler Adapter****VP-3****Yoke Valve Dust Cover**

Available colors: blue, black

**VP4-P****DIN Tank Valve Dust Cover****FEATURES:**

- 5 ft braided nylon rope in safety-striped
- Available colors: G (metal), BK (plastic)

**RL-1****260 Ft Dive Reel****RL-2****145 Ft Dive Reel****RL-3/N & RL-4/N****100 Ft Finger Reel & 165 Ft Finger Reel****FEATURES:**

- Last 15 ft of bright orange line is designed as a decompression stop reminder for divers
- Comes with marine-grade brass clip
- Strong material with specialized braiding
- Maximum hold dry weight: 176 lb

**RL-5****50 Ft Finger Reel****RL-6N****50 Ft Dual-Color Aluminum Dive Reel****FEATURES:**

- Handheld, flared, lightweight aluminum reels with braided, highly visible nylon line
- Last 15 ft of line is bright fluorescent orange, remainder is neon yellow; the new design makes these reels ideal for use in decompression stops
- Braided line is strong enough to hold dry weight 176 lb
- Large center hole can accommodate thick gloves
- Heavy-duty, double-ended 4 in bolt snap in corrosion-resistant 304 stainless steel is included
- RL-6 weighs 8.32 oz RL-7 weighs 10.26 oz

**RL-7N****100 Ft Dual-Color Aluminum Dive Reel**



**AW-1 (5PC)****Line Arrow****FEATURES:**

- Highly visible color makes the arrow easier to spot
- **Dimensions:** overall length 2.5 in
- **Available colors:** Y, W

**AW-3 (5PC)****Line Arrow****FEATURES:**

- Three highly visible fluorescent color options for spotting with UV lights in silt-out conditions
- **Dimensions:** overall length 3.3 in
- **Available colors:** F (glow in the dark), NY, W, O

**JL-1****Jon Line****FEATURES:**

- Includes 7 ft x 1 in nylon webbing lanyard
- 5 in heavy duty, corrosion-resistant, 4 mm 304-grade stainless steel hairpin hook
- Integrated pouch attaches to BC clip or belt
- **Pouch dimensions:** 3 x 5 in

**JL-4****Single Drift Hook****FEATURES:**

- Hook is constructed of corrosion-resistant stainless steel
- 5 ft braided nylon rope in safety-striped in a highly visible neon yellow

**AW-2 (5PC)****Fluorescent Line Arrow****FEATURES:**

- Highly visible fluorescent yellow color for spotting with UV lights in silt-out conditions
- **Dimensions:** overall length 2.5 in

**AW-4 (5PC)****Round Line Marker****FEATURES:**

- 3 highly visible fluorescent color options for spotting with UV lights in silt-out conditions
- **Dimensions:** overall length 2.2 in
- **Available colors:** F (glow in the dark), NY, W, O

**JL-2****Drift Hook****FEATURES:**

- Includes 7 ft x 1 in nylon webbing lanyard
- Heavy-duty, corrosion-resistant, 304-grade stainless steel hook
- Integrated pouch attaches to BC clip or belt
- **Pouch dimensions:** 3 x 5 in

**JL-5****Double Drift Hook****FEATURES:**

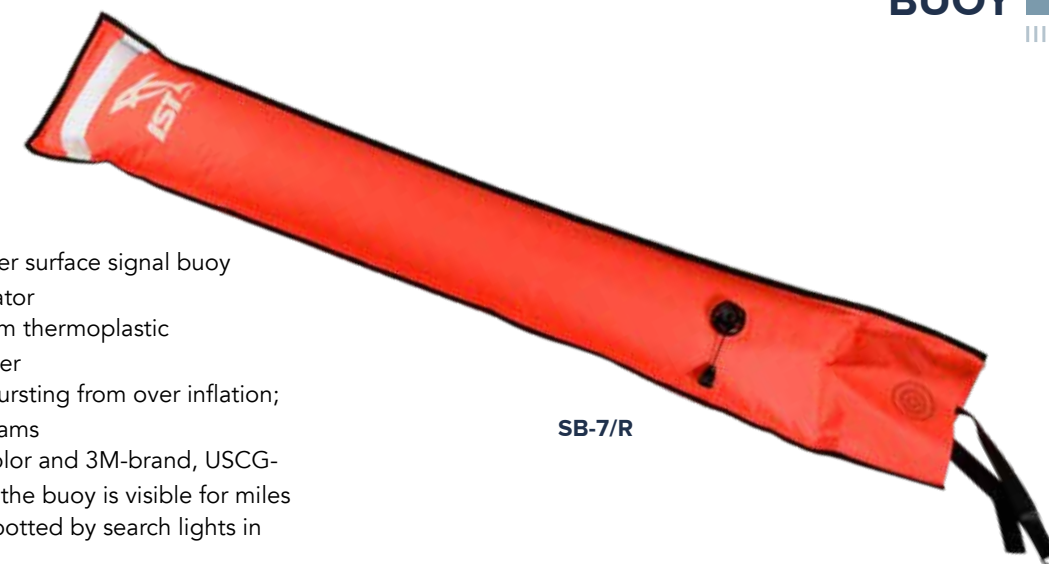
- Double hook is constructed of corrosion-resistant stainless steel
- 5 ft braided nylon rope in safety-striped, highly visible neon yellow

**JL-6****Coiled Drift Hook****FEATURES:**

- Wire-reinforced coil lanyard with drift hook
- Hook is constructed of corrosion-resistant stainless steel
- Includes large swiveling stainless steel snap clip at one end

**SB-7/R****Surface Marker Buoy with Reflective Tape****FEATURES:**

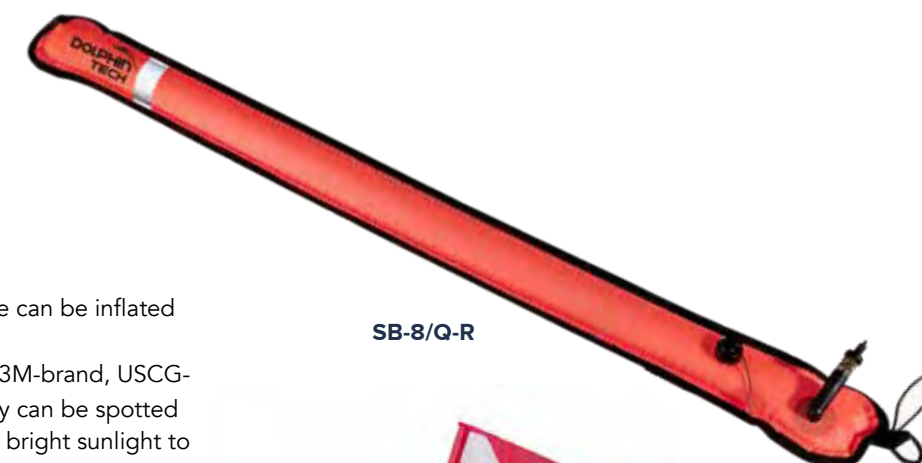
- Reusable, sturdy, dual-layer diver surface signal buoy with open bottom and oral inflator
- 210D nylon exterior with 0.1 mm thermoplastic polyurethane (TPU) inner bladder
- Over pressure valve prevents bursting from over inflation; taped edges reinforce outer seams
- High-contrast, bright orange color and 3M-brand, USCG-approved SOLAS tape ensures the buoy is visible for miles in clear conditions and easily spotted by search lights in low-visibility conditions
- **Dimensions:** 54 x 9.5 in



SB-7/R

**SB-8/Q-R****Surface Marker Buoy with Reflective Tape****FEATURES:**

- Made from 210D TPU-coated nylon
- Quick-disconnecting metal inflator valve can be inflated with BC hose
- High-contrast, bright orange color and 3M-brand, USCG-approved SOLAS tape ensures the buoy can be spotted for miles in all visibility conditions, from bright sunlight to total darkness
- **Dimensions:** 45 x 4.7 in



SB-8/Q-R

**SB1****Diver Below Buoy****FEATURES:**

- Surface Marker with International Dive Flag
- **Dimensions:** 29 x 14 x 16 in

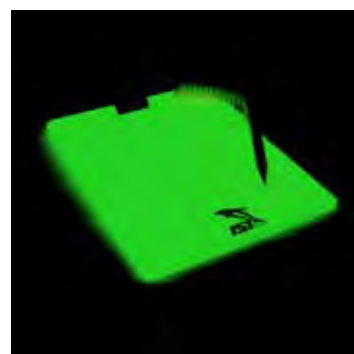


## WR-1/F

### Glow-in-the-Dark Underwater Writing Slate

#### FEATURES:

- Comes with a clip for convenient carrying
- Equipped with quick-release buckle
- Charcoal pencil prevents corrosion
- **Dimensions: 5 x 6 in**



## WR-3/F

### Glow-in-the-Dark, Multi-Sided Underwater Writing Slate

#### FEATURES:

- Unique slate with elastic hinge allows extra writing space without losing compactness
- Attach to forearm for streamlining
- Charcoal pencil prevents corrosion
- **Dimensions: 4.1 x 4.7 in**



## WR-7

### Underwater Writing Slate

#### FEATURES:

- Quick-release buckle and clip
- **Dimensions: 11 x 8 in**



## WR1

### Underwater Writing Slate

#### FEATURES:

- Hook-on clip for attachment to belt or BC
- Quick-release buckle for fast retrieval
- **Dimensions: 5 x 6 in**



## WR4

### Underwater Slate with Compass

#### FEATURES:

- White waterproof slate with mounted glow-in-the-dark compass
- Retractable lanyard offers quick access, automatically stows the slate when not in use
- **Dimensions: 2.8 x 8 in**



## WR5-REFILL

### Underwater Notebook Refill

#### FEATURES:

- 25-page refill for IST WR-5 Dolphin Tech Refillable Underwater Notebook
- **Dimensions when open: 7 x 8 in**
- **Dimensions when closed: 7 x 4 in**



## WR3

### Multi-Sided Underwater Slate

#### FEATURES:

- Multi-sided, three-layer waterproof slate with elastic hinge bands for holding selected layer open or keeping closed when not in use
- Velcro strap for secure attachment to arm; four replacement elastic bands and replacement pencil included
- **Dimensions: 4.1 x 4.7 in**



## WR5

### Underwater Notebook

#### FEATURES:

- Underwater notebook with 25 reusable waterproof pages; refills available
- Durable 2250D PU-coated woven ballistic nylon cover
- Clear window pockets on the inner and outer back cover
- **Dimensions when open: 8 x 10 in**
- **Dimensions when closed: 8 x 5 in**



## WR6

### Underwater Slate with Retractor

#### FEATURES:

- Retractor with lockable mechanism to stop the slate from being constantly pulled back while writing
- 6 in ruler stamped along one edge
- **Dimensions: 7 x 5 in**
- **Stainless steel wire length: 18.7 in**







## ON-1

### Octopus Necklace

#### FEATURES:

- **Colors:** BK, NY
- Sturdy, stretchy silicone construction
- **Available in circumference sizes:** S (23.5 in), M (28 in), L (31.5 in)

## MPC

### Octopus Cover



#### FEATURES:

- Hygienic protection for your mouthpiece
- Rounded shape accommodates different mouthpiece sizes and shapes
- Includes swiveling clip for hanging
- **Available colors:** GN, NY, O

## SFP-2

### Octopus Plug



#### FEATURES:

- Uniquely designed 2nd stage/octopus breathing passage plug
- Fits a variety of mouthpieces
- Equipped with a clip to secure 2nd stage/octopus to BCD D-ring

## K28

### Technical Diving Knife



#### FEATURES:

- Compact dive knife, dual-edge blade constructed of hard 420-grade stainless steel
- Includes smooth edge, serrated edge and cutting notch
- Includes durable nylon sheath
- **Overall length:** 6 in
- **Blade Length :** 2 3/4 in

## SFP-1

### Octopus Plug



#### FEATURES:

- Blocks the opening of any 2nd stage/octopus mouthpiece to keep the internal clean when not in use

## OPRV1

### Adjustable 1st Stage Over Pressure Valve



#### FEATURES:

- Pressure releases from 11.7 bar (170 psi) and up

## SP7A-1

### Stainless Wire-Reinforced Coil Lanyard



#### FEATURES:

- Wire-reinforced coil lanyard with quick-release buckle and gate clip, expands to 36 in

## SP-25A

### Retractable Lanyard



#### FEATURES:

- **Retracted length:** 7.15 in
- **Maximum extension:** 36 in

## SP36A

### Quick-Release Buckle



#### FEATURES:

- Quick-release buckle lanyard with gate clip and heavy-duty, locking snap shackle clip
- **Overall length:** 11.8 in

## SP-8A

### Stainless Wire-Reinforced Coil Lanyard



#### FEATURES:

- Wire-reinforced coil lanyard with quick-release buckle and two swiveling gate clips, expands to 40 in

## SP6A

### Coil Lanyard with Clips



#### FEATURES:

- Wire-reinforced coil lanyard with gate clip; extends up to 36 in

## SP2A

### Clip



#### FEATURES:

- Woven nylon webbed strap with swiveling gate clip adds an attachment point to a diving belt
- Slides onto belts up to 2 in wide



LOW-PRESSURE HOSE  
HIGH-PRESSURE HOSE  
BRAIDED LOW-PRESSURE HOSE  
BCD INFLATOR HOSE

Only a handful of companies boast the state-of-the-art technology to produce hoses of this caliber. Dolphin Tech leads the way with its premier quality, reinforced, double-braided, high-performance hoses for both low- and high-pressure applications.

Our exclusive braided polyester design results in regulator, gauge and BC quick-disconnect hoses that are lightweight and pliable for easy use and comfort underwater. These hoses are engineered to be durable: the braided nylon outer sleeve encases a polyurethane compound liner and polyester inner layer. The result is a hose that's rugged, kink-resistant, impervious to abrasions, and highly resistant to UV rays dive after dive and year after year. It's a hose that travels especially well, with a light weight that ensures less jaw fatigue when used with a regulator or octopus.

Dolphin Tech's regular low- and high-pressure rubber hoses are the workhorses of the line. For divers who insist upon the rugged durability you can find only in rubber, these are definitely the hoses of choice. Rubber hoses weigh a bit more but are virtually indestructible. With proper use and care, these hoses can last a lifetime.

Dolphin Tech features a full line of hose accessories as well, including adapters, hose protectors and wraps for every scuba application and need.

PRESSURE HOSE PRICE CHART

LOW-PRESSURE HOSES

	6 IN		9 IN		15 IN		22 IN		24 IN	
LP-BK										
LP-NY										
LP-BC										

	26 IN		27 IN		28 IN		30 IN		32 IN	
LP-BK										
LP-NY										
LP-BC										

	36 IN		40 IN		42 IN		60 IN		84 IN	
LP-BK										
LP-NY										
LP-BC										

	27 IN	
LP-BC-MF-BK		
LP-BC-MF-NY		

BRAIDED LOW-PRESSURE HOSES

	22 IN		27 IN		28 IN		30 IN		32 IN	
LP-MF-BK										
LP-MF-NY										
LP-MF-B										
LP-MF-GN										

	36 IN		40 IN		60 IN		84 IN	
LP-MF-BK								
LP-MF-NY								
LP-MF-GN								



PRESSURE HOSE PRICE CHART

HIGH-PRESSURE HOSES

4 IN	6 IN	9 IN	20 IN	24 IN
26 IN	30 IN	32 IN	36 IN	40 IN

HP1

Hose Protectors (1.8 cm)

- Available colors: BK, Y, B, P, R

HP4

Hose Protectors

- Product dimensions: base 1.8 cm; top 1.2 cm
- Available colors: B, Y, BK

HP2

Hose Protectors

- Product dimensions: 1.4 cm
- Available colors: BK, Y

HW1

3 Ft. Hose Wrap

- Available colors: Y, B, P

N1

Air Nozzle with BC Hose Connector

Note: For land use only

N3

2nd Stage In-Line Safety Shutoff Valve

FEATURES:

- It can shut down gas supply to a frozen and leaking 2nd stage

N4

90° adaptor

Note: For 2nd stage

N5

Stainless Air Nozzle

Note: For land use only

RA1

Adapter:

9/16 In Male to 3/8 In Female

RA4

Adapter:

3/8 In Male to 7/16 In Female

RA7

Additional high-pressure port for your regulator's 1st stage. One 7/16-20 male to two 7/16-20 female outlets. The additional port allows 360° swivel. Chrome brass construction.

RA10

Regulator Hose to Standard BC Inflator Hose Converter

N6

Tire Inflator

RA2

Adapter:

1/2 In Male to 3/8 In Female

RA5

Adapter:

7/16 In Male to 3/8 In Female

RA8

Additional low-pressure port for your regulator's 1st stage. One 3/8 in male to two 3/8 in female outlets. Chrome brass construction.

RA11

Adapter:

9/16 In Male to 3/8 In Female

N7

2nd Stage Swivel

RA3

Adapter:

3/8 In Male to 1/2 In Female

RA6

1st stage 90° adapter changes the angle of the intermediate pressure hose, giving the 1st stage better hose routing for streamlining.

RA9

1st stage 90° adapter changes the angle of the high-pressure hose, giving the 1st stage better hose routing for streamlining. Allows 360° swivel. Chrome brass construction.

RA12

Adapter:

3/8 In Male to 7/16 In Female



# MUTINEER

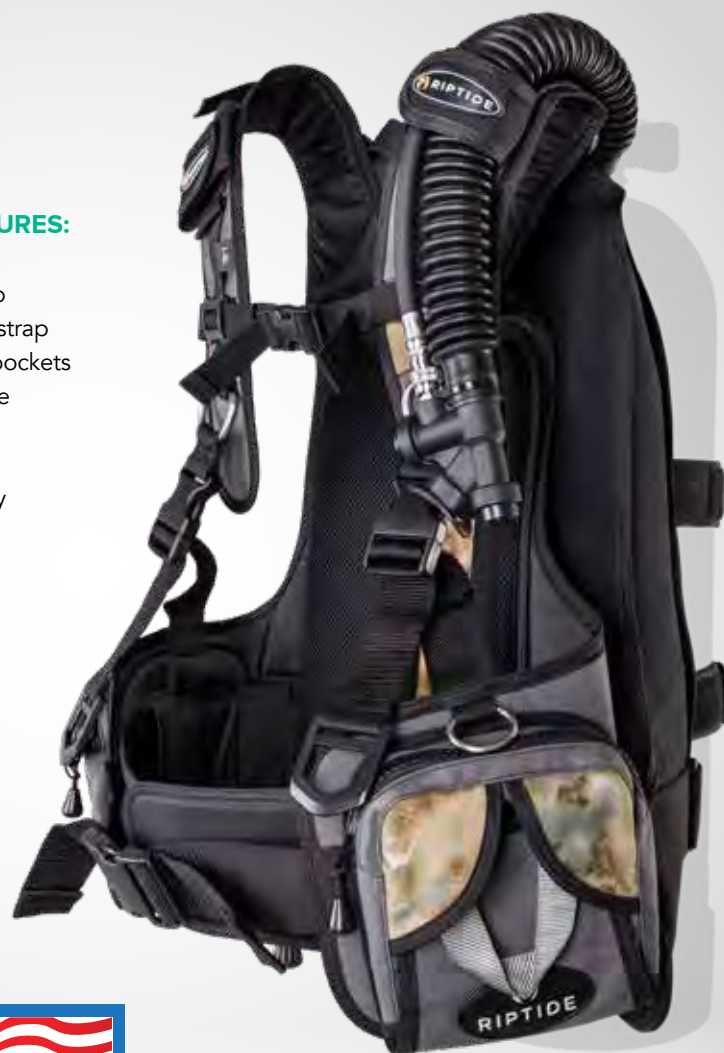
Men's Backmount BCD  
Weight-Integrated/Lightweight — 4.9 Lbs  
5-year Warranty

## FEATURES:

- 4.9 lbs dry weight
- Weight-integrated
- 38 lbs of lift
- Water-activated strobe light compartment
- Trim weight pockets available
- **Available colors: camo and yellow**

## ADDITIONAL FEATURES:

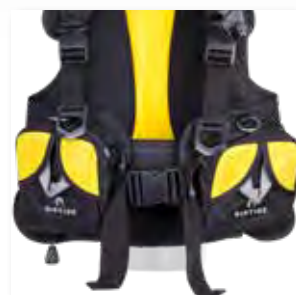
- Dual cam bands
- Height adjuster strap
- Adjustable sternum strap
- Easy zipper weight pockets
- Flat oval inflator hose
- Signal tube pocket
- 9 D-ring sleeves
- Handle for easy carry



ABATE AIR CELL OFFERS  
38 LBS OF LIFT



TWO WEIGHT POCKETS,  
12 LB CAPACITY EACH



BACK POCKET FOR SMB  
OR LIFT BAG



RAPID EXHAUST AND  
STROBE LIGHT



SIZE	HEIGHT	WEIGHT	WAIST	CHEST	LIFT
S / M	5' - 6'	110 - 150 lbs	25" - 30"	35" - 37"	38 lbs
M / L	5' 5" - 6'	135 - 190 lbs	30" - 36"	32" - 38"	38 lbs
L / XL	5' 8" - 6' 5"	185 - 250 lbs	35" - 42"	38" - 43"	38 lbs
XXL	5' 8" - 6' 5"	250 - 300 lbs	40" - 52"	42" - 50"	38 lbs

# MIRA

Woman's Backmount BCD  
Weight-Integrated/Lightweight — 4.8 Lbs  
5-year warranty

## FEATURES:

- Woman's cut
- 4.8 lbs dry weight
- 30 lbs of lift
- Weight-integrated
- Water-activated strobe light compartment
- Trim weight pockets available
- **Available colors: coral and sea**

## ADDITIONAL FEATURES:

- Dual cam bands
- Height adjuster strap
- Adjustable sternum strap
- Easy zipper weight pockets
- Flat oval inflator hose
- Signal tube pocket
- 9 D-ring sleeves
- Handle for easy carry



ABATE AIR CELL OFFERS  
30 LBS OF LIFT



TWO WEIGHT POCKETS,  
12 LB CAPACITY EACH



BACK STOW POCKET  
FOR SMB OR LIFT BAG



RAPID EXHAUST  
AND STROBE LIGHT



SIZE	HEIGHT	WEIGHT	WAIST	LIFT
XS / S	4' 7" - 5' 5"	90 - 130 lbs	25" - 30"	30 lbs
M / L	5' 2" - 6"	120 - 170 lbs	30" - 34"	30 lbs
L / XL	5' 5" - 6' 2"	165 - 210 lbs	33" - 40"	30 lbs



STURDY BALLISTIC NYLON

CENTER MOUNT  
ELBOW INFLATOR



FOUR BOTTOM-DRAINAGE GROMMETS



ELASTIC STORAGE BANDS

## RUFF FISH

Single Bladder Air Cell  
Use for Single- or Double-Tank Assemblies  
Lightweight — 4.4 Lbs  
5-year warranty

### FEATURES:

- 55 lbs of lift
- Ballistic nylon
- Dry weight 4.4 lbs
- Center elbow exhaust
- Lower left dump/OP valve
- Internal bungees
- Band cutouts
- Heavy-duty oval hose
- **Available colors: black, camo and yellow**

### SPECIAL FEATURES:

- Elastic straps to hold signal tube or lift bag

## D RING-B

- Heavy-duty, corrosion-resistant stainless steel bent D-ring
- Removable crossbar can be opened with a flathead screwdriver
- Dimensions: 2.5 (W) x 2.25 in (L)



EASY ADJUST HARNESS SYSTEM



RAPID SHOUDLER  
EXHAUST

REMOVABLE CROTCH STRAP



## VANQUISH

Backmount: One Size Fits Most  
Lightweight — 4.2 Lbs / Great for travel  
5-year warranty

### FEATURES:

- 4.2 lbs dry weight
- 40 lbs of lift
- Soft pack folds down for travel
- Smallest profile on the market
- **Available colors: black, camo, yellow**

Compatible with  
IST TECH BCD WEIGHT POCKET\*



JT-WP-4



JT-WP-7



JT-WP-8

\* See Page 23



ABATE AIR CELL  
OFFERS 40 LBS OF LIFT

## GATOR POCKETS

- 7 x 4.5 x 2 in
- Made from a tough abrasion-resistant fabric
- Easy top-loading zipper makes it easy to add weights while in the water
- No external parts or pockets to lose
- Each pocket holds 12 lbs



## TRIM-WP

- 5.25 x 4.25 x 2 in
- All-purpose trim pocket in durable woven nylon with heavy-duty Velcro flap closure
- Bottom grommet for fast drainage



## TROPICAL-WP

- 5 x 4 x 2 in
- All-purpose trim pocket in durable woven nylon with heavy-duty Velcro closure and pull tab, wide webbing loop threads onto dive belt up to 2 in wide
- Bottom grommet for fast drainage



SIZE	HEIGHT	WEIGHT	WAIST	CHEST	LIFT
ONE SIZE	5'- 6'6"	90 - 260 lbs	27" - 50"	30" - 50"	40 lbs





## J-1700

### MERCURY BCD with Weight Pockets

#### FEATURES:

- Diving BCD with durable 420D TPU-coated nylon shell
- Cold-water capable power inflator (IF-301) with pull dump
- Two additional rear quick-dump valves
- Two integrated weight pockets
- Two rear trim pockets hold up to 2.2 lbs of weight each
- Padded backpack with adjustable sternum strap
- **Available sizes: XS - XL**

#### SIZE CHART

SIZE	BUOYANCY	CHEST (IN)	WAIST (IN)
XS	120 N (26 lbf)	26 - 36	25 - 32
S	140 N (31 lbf)	30 - 40	29 - 36
M	170 N (38 lbf)	34 - 44	33 - 40
L	220 N (49 lbf)	38 - 48	37 - 44
XL	270 N (60 lbf)	40 - 50	41 - 48

## J-1300

### ARTEMIS Women's Jacket-Style BCD with Weight Pockets

#### FEATURES:

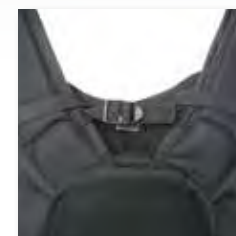
- Women's diving BCD with durable 840D nylon shell
- Special cut, harness design and padding design for the best fit and maximum comfort on a woman; more compact power inflator to better fit a female hand
- Adjustable sternum strap and cummerbund for a custom fit
- Weight pockets with quick-release buckles can hold up to 8.8 lb each and are positioned at an angle to be more easily accessible to female divers; two rear trim pockets hold up to 2.2 lbs of additional weight each
- Two generous cargo pockets, multiple D-ring attachment points
- **Available sizes: XS - L**



ANGLED ADVANCED BALLAST REMOVAL POCKET



SHOULDER WIDTH ADJUSTMENT



PROPER FITTING FOR FEMALE DIVERS



TWO REAR TRIM POCKETS FOR 2.2 LB WEIGHTS



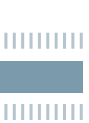
THICK BACK PAD FOR GREATER SUPPORT



#### SIZE CHART

SIZE	BUOYANCY	CHEST (IN)	WAIST (IN)
XS	140 N (32 lbf)	27.6 - 33.5	23.6 - 27.6
S	140 N (32 lbf)	31.5 - 37.4	25.6 - 31.5
M	140 N (32 lbf)	35.4 - 41.3	29.5 - 35.4
L	140 N (32 lbf)	39.4 - 45.3	33.5 - 39.4





# J-1000

ALPHA Premium Jacket Style BCD with Personal Harness System

- FEATURES:**
- Premium diving BCD with durable 840D Nylon shell and personal harness system for the best custom fit; padded backpack for added comfort
  - Ultra-compact, cold-water capable power inflator with pull dump; two additional rear quick dump valves
  - Advanced Ballast Removal System II (ABRS II) weight pockets with double-lock, quick-release buckles take up to 8.8 lbs each; two rear trim pockets hold up to 2.2 lbs of additional weight each
  - Roomy cargo pockets and additional cummerbund pocket; stainless steel D-rings and two snaps with quick-release buckles offer multiple points of attachment
  - Tank stabilizing plate, rails and cam strap prevent tank roll
  - **Available sizes: XXS - XL**



ANGLED ADVANCED BALLAST REMOVAL POCKET



THICK BACK PAD FOR GREATER SUPPORT



ADJUSTABLE CUMMERBAND



TANK STABILITY PLATE AND TANK STRAP



## SIZE CHART

SIZE	BUOYANCY	CHEST (IN)	WAIST (IN)
XS	140 N (32 lbf)	27.6 – 33.5	23.6 – 27.6
S	140 N (32 lbf)	31.5 – 37.4	25.6 – 31.5
M	140 N (32 lbf)	35.4 – 41.3	29.5 – 35.4
L/XL	140 N (32 lbf)	39.4 – 45.3	33.5 – 39.4



## HEAVY-DUTY

# J-800

HOPE Value-Priced, Heavy-Duty Scuba Diving BC / BCD

- FEATURES:**
- Diving BCD with durable 1000D cordura shell
  - Cold-water capable power inflator with pull dump; two additional rear quick-dump valves
  - Adjustable sternum strap and cummerbund for a custom fit; padded backpack for added support and comfort
  - Two roomy cargo pockets with Velcro closure; Delrin D-rings offer multiple points of attachment
  - Ideal for use as rental equipment
  - **Available sizes: XXS - XL**

IDEAL FOR RENTAL

## SIZE CHART

SIZE	BUOYANCY	CHEST (IN)	WAIST (IN)
XXS	70 N (15 lbf)	26 – 36	25 – 32
XS	120 N (26 lbf)	26 – 36	25 – 32
S	140 N (31 lbf)	30 – 40	29 – 36
M	170 N (38 lbf)	34 – 44	33 – 40
L	220N (49 lbf)	38 – 48	37 – 44
XL	270 N (60 lbf)	40 – 50	41 – 48





## IF-800

### Inflator Hose

Length: 17 in  
For J-800 and J-1700

## BP-1-1

### Back Plate with Strap

#### FEATURES:

- Back plate with 2 in webbing harness and 304 grade stainless steel buckles



## BCHH

### Hose Holder

#### FEATURES:

- Can be clipped onto D-rings to arrange hose in a tidy manner and reduce drag



## BCHH-3

### Hose Holder

#### FEATURES:

- Overall length: 4.5 in
- Three hose holders with clip
- Colors: NY, B, BK



## IF-RIPTIDE

### Inflator Hose

This reliable, precision-engineered standard tech inflator has no unnecessary parts in its elbow connection and keeps the BCD as streamlined as possible.

Length: 17 in



## LJ-300

### Adult Life Vest

#### FEATURES:

- Made of heavy-duty 210D nylon fabric
- Filled with ultra-high-grade environmentally-friendly EPE foam
- Crotch strap for safety
- Sizes: S-XXL

## LJ100

### Nylon Jacket

#### FEATURES:

- 210D nylon with TPU coating
- Low-resistance oral inflator
- Rapid release valve
- Buoyancy (medium): 19 lbf
- Buoyancy (large): 27 lbf
- Waist size (medium): 30-52 in
- Waist size (large): 34-62 in
- Adjustable Waist Band







## R860

### Regulator

With full CE certification and performance that is on par with the finest regulators on the market, the R860 is well-suited for stringent cold water, deep dives and demanding profiles. It can also be fine-tuned for smooth, responsive gas delivery in more relaxed conditions.

The R860 is the flagship in IST Sports' Pro Line of scuba regulators, and rightfully so. Its R-8 1st stage is a balanced diaphragm design that's available with an optional environmental kit that prevents freezing when diving in cold-water conditions. There are two high-pressure ports and four intermediate ports mounted on a swivel turret for easy hose routing. On breathing machine simulator tests, the 1st stage is one of the best ever tested by Scuba Diving Magazine's ScubaLab. The O-60 2nd stage is equipped with a metal balancing tube and a pair of user adjustments: the dive/pre-dive thumb lever detunes the regulator to minimize freeflow on the surface; the breathing resistance knob lets you regulate air flow as you descend to deeper depths. Bottom line: the R-860 is designed for divers of all skill levels and for water conditions ranging from tropics to the arctic.

#### FEATURES:

##### R8 BALANCED DIAPHRAGM 1ST STAGE

- High-flow, fast-acting valve system capable of delivering a large amount of breathing gas in an instant, irrespective of breathing demand, cylinder pressure or depth. It has not only passed the stringent CE test but the performance is comparable with the best available
- Four intermediate pressure ports (located in the swivel turret) and two high pressure ports
- Available with YOKE or 300 bar DIN (G5/8) connector
- Anti-freeze models are available separately. Intermediate pressure setting: 9.5-10.0 bar (137-145 psi)
- Ventilation rate: 206 bar (3000 psi); 3820 L/min (135 cu ft/min)



## R-860/5 / R-860N-DIN/5

### Diaphragm Regulator with 5th Intermediate Pressure Port

#### FEATURES:

- Extension design from IST R-8 balanced diaphragm 1st stage with an additional intermediate pressure port (5 ports in total)
- Comes with IST O-60 adjustable balanced 2nd stage
- Also available in DIN (G5/8) connector. (Only anti-freeze model)



R-8

R8/5

R8DIN

R8N

R8N-DIN

R8N-DIN/5

## R-8

High-flow, fast-acting valve system that is capable of delivering a large amount of breathing gas in an instant, irrespective of breathing demand, cylinder pressure or depth. It has not only passed the stringent CE test but the performance is comparable with the best available.

#### FEATURES:

- Four intermediate pressure ports (located in the swivel turret) and two high pressure ports
- Available with YOKE or 300 bar DIN (G5/8) connector
- Intermediate pressure setting: 9.5-10.0 bar (137-145 psi)
- Ventilation rate: 206 bar (3000 psi); 3820 L/min (135 cu ft/min)
- Anti-freeze models are available Separately

IDEAL FOR  
RENTAL

## R750

IST's new R750 was designed and developed with reliability as a main priority. It is simple to use and easy to service. With proper care and maintenance, it gives years of trouble-free diving.

### R7 Piston 1st Stage

- Piston technology has been used in scuba diving for many years now and its longevity lies in its simplistic, bomb-proof design
- This first stage can handle plenty of abuse and is easy for technicians to service
- Available with YOKE or 300 bar DIN (G5/8) connector
- Four intermediate pressure ports and one high pressure port

Intermediate pressure setting: 9.5-10.0 bar (137-145 psi);  
ventilation rate: 206 bar (3000 psi); 3110 L/min (110 cu ft/min)

### FEATURES:

- For water temperature over than 50° F
- CE Certified



## R-7 / R7-DIN

### FEATURES:

- IST's new R750 was designed and developed with reliability as the main priority. It is simple to use and easy to service.
- The proven technology used means with proper care and maintenance, it gives years of trouble-free diving
- Piston technology has been used in SCUBA for many years now and its longevity lies in its simplistic, bomb-proof design
- This first stage can handle lots of abuse and is easy for technicians to service
- Inter. pressure setting @ 9.5~10.0 bar (137~145psi) Ventilation rate @ 206 bar (3000psi): 3110L / min. (110 cuft / min.)
- Available with YOKE or 300BAR DIN (G5/8) connector
- 4 intermediate pressure ports and 1 high pressure port
- For water temperature over than 50° FF
- CE Certified

R750-DIN



## O60

### Adjustable Balanced 2nd Stage Scuba Diving Regulator

### FEATURES:

- Can be used in warm or cold water
- Housing interior structured to create a pressure drop just before the mouthpiece; pulls air toward diver's mouth
- Pre-dive/dive switch prevents freeflow at the surface
- Adjustment knob allows for fine-tuning of airflow
- High-spec, large-bore intermediate pressure hose (maximum service pressure at 34.5 bar/500 psi)
- Available in black or yellow



## O10

### Premium Adjustable Scuba Diving Backup Regulator, Octopus

### FEATURES:

- Constructed of a special polymer resin with marine-grade brass housing to reduce weight
- Precision-engineered; neutrally buoyant
- Pre-dive/dive switch prevents freeflow at the surface
- Large, easy-reach side adjustment knob allows fine tuning of air flow
- Includes 36 in high-flow hose specially designed for this regulator





IDEAL FOR  
RENTAL

## O50

### Downstream Valve Scuba Diving Backup Regulator, Octopus

#### FEATURES:

- High-volume backup 2nd stage for emergency breathing situations
- Uses the time-proven, easy-to-service down stream valve
- Pre-dive/dive switch prevents freeflow at the surface
- Light action; easy-access purge button
- High-spec, large-bore intermediate pressure hose (maximum service pressure at 34.5 bar/500 psi)
- **Available in black or yellow**



## O20

### Premium Scuba Diving Backup Regulator, Octopus

#### FEATURES:

- Constructed of a special polymer resin with marine-grade brass housing to reduce weight
- Includes 36 in (90 cm) high-flow hose specially designed for this regulator
- Pre-dive/dive toggle switch prevents freeflow at the surface
- Precision-engineered; neutrally buoyant
- **Available in black or yellow**



## OR-4

### 11-Piece O-Ring Kit

#### INCLUDES:

- SPG swivel spool O-rings (2)
- Low-pressure hose female O-rings (2)
- Low-pressure hose male O-rings (2)
- High-pressure hose male O-rings (2)
- Tank valve (YOKE) O-rings (2)
- Silicone grease (2 g)



## OR-5

### 21-Piece O-Ring Kit

#### INCLUDES:

- SPG swivel spool O-rings (4)
- Low-pressure hose female O-rings (3)
- Low-pressure hose male O-rings (5)
- High-pressure hose male O-rings (2)
- Tank valve (YOKE) O-rings (5)
- Tank O-ring (1)
- Silicone grease (2 g)

## SGT-2

### Silicone Grease

#### FEATURES:

- 2.12 oz silicone grease
- Large volume for shop use



## SGT-5

### Silicone Spray

#### FEATURES:

- 8.5 oz (250 ml)
- Ideal for lubricating O-rings or other products



## SGT-04

### Silicone Grease

#### FEATURES:

- 0.53 oz silicone grease tube





## DT-1

### Diver's Multi-Tool

#### FEATURES:

- Overall length when folded is 4.7 in
- Includes:
  - Philips screwdriver
  - Flathead screwdrivers (2)
  - Awl
  - Allen keys in 4 mm and 3/16 in (2)
  - Wrenches in 15 mm, 5/8 in, 1/2 in, 9/16 in, 11/16 in and 13/16 in (6)



## DT2

### Diving Equipment Tool Kit

#### TOOL KIT CONTAINS:

- Knife
- 5 in nose pliers
- Awl
- 1/4 in sockets: 4 mm and 4.5 mm (2)
- Assorted screwdriver bits (7)
- 6 in adjustable spanners (2)
- Zip ties (4)
- 1/4 in drive
- Allen keys: 4 mm, 5 mm, 6 mm, and 3/16 in (4)
- 1/4 in adapter (4)



## DT4

### Technician's Tool Kit

#### TOOL KIT CONTAINS:

- Allen keys: 4 mm, 5 mm, 6 mm, 8 mm, 3/16 in (5)
- Adjustable spanner
- Phillips-head screwdriver
- Flat head screwdriver
- 2nd stage 4-slot tool
- 2nd stage orifice adjustment tool
- 1st stage pin spanner
- 1st stage handle (to connect to low-pressure port and high-pressure port)
- 1st stage face tool
- Tank valve knob screwdriver
- BCD low-pressure hose valve tool
- Pointed C-clip pliers
- Awl
- Zip ties (5)
- Knife
- O-ring hooks (3)
- O-rings for: 1st stage LP port / 1st stage HP port / 2nd stage LP hose / BCD LP hose valve / yoke or DIN tank valve (5)
- Silicone grease

## DT5

### Mini Tool

#### FEATURES:

- Allen keys in 1/4 in, 3/16 in, and 5/32 in (3)
- Orifice-adjustment flathead screwdriver
- O-ring pick
- Inflator schrader valve tool
- Phillips-head screwdriver
- Valve nut slotted screwdriver
- Overall length: 2.35 in when folded



## DT-6

### Yoke Tool for R-7 1st Stage Regulator



## DT-7

### Yoke Tool for R-8 1st Stage Regulator



## DT4-01

### Allen Keys

- Comes in 4 mm, 5 mm, 6 mm, 8 mm, and 3/16 in



## DT4-OT4

### Brass O-Ring Tool Kit

- Comes in 3 different styles



## DT4-07

### 1st Stage Regulator Pin Spanner



## DT4-02

### Tank Valve Knob Screwdriver



## DT4-05

### 2nd Stage 4-Slot Tool



## DT4-08

### 1st Stage Regulator Handle

#### FEATURES:

- Connects to low-pressure or high-pressure ports
- Helps to keep 1st stage steady while performing maintenance



## GP-15

### Mini SPG Pressure 5000 PSI Gauge

#### FEATURES:

- Extremely low drag and lightweight
- Maximum pressure: 5000 psi
- Luminous 2 in dial face
- Encased in a durable boot
- Includes a protective pouch



## GP-16

### Pony Bottle Gauge

#### FEATURES:

- Maximum pressure: 350 bar (or 5000 psi)
- Small and compact; weighs only 1.40 oz
- Fluorescent gauge face
- Comes equipped with a high-pressure O-ring for immediate installation



## GP-23

### Wrist Compass

#### FEATURES:

- Rotating bezel with luminous face
- Side window for easy reading
- Durable boot with wrist strap
- Oil-filled for maximum sensitivity and accuracy

## GP-25

### Pressure Gauge

#### FEATURES:

- Glow in the dark face with 5000 PSI reading
- Comes with 6 in high pressure hose
- Includes a protective pouch



## GP500

### Mini Triple Gauge Console PSI Depth with Compass

#### FEATURES:

- Mini pressure gauge and depth gauge console; compass on reverse side
- Large compass with bezel and side window for easy reading
- Maximum depth reading: 200 ft
- Maximum pressure reading: 5000 psi; glow-in-the-dark gauge faces
- Durable TPR boot
- Includes a protective pouch



## GP-9200

### Triple Gauge Console

#### FEATURES:

- Multicolor markings for easy reading
- Glow-in-the-dark gauge faces
- Large compass with bezel and side window
- Maximum depth: 230 ft
- Maximum pressure: 5000 psi
- Durable boot
- Includes a protective pouch



**CT-1****Premium DIN Tank Pressure Checker with Gauge****FEATURES:**

- DIN (300 bar, G 5/8) tank pressure checker — essential safety equipment
- Easy-to-read, multicolor gauge
- Fits standard size coupling
- Integrated bleeder valve
- Trusted by professional and tech divers

**CT-2****Premium Yoke Tank Pressure Checker with Gauge****FEATURES:**

- Yoke (4000 psi) tank pressure checker — essential safety equipment
- Easy-to-read, multicolor gauge
- Fits standard size coupling
- Oil injection ensures maximum accuracy
- Trusted by professional and tech divers

**CT-3****Rugged Intermediate Pressure Checker with BC Hose Connector****FEATURES:**

- Essential safety and maintenance equipment
- Low-pressure check gauge
- Easily check regulator intermediate pressure
- Reads up to 300 psi
- Protective rubber boot

**CT-4****Intermediate Pressure Checker with Pressure Release Valve****FEATURES:**

- Low-pressure check gauge—essential safety equipment
- Includes BC hose quick disconnecter
- Built-in pressure release valve
- Reads up to 300 psi
- Protective rubber boot

**CT-6****Regulator 2nd Stage Calibration and Service Tool****FEATURES:**

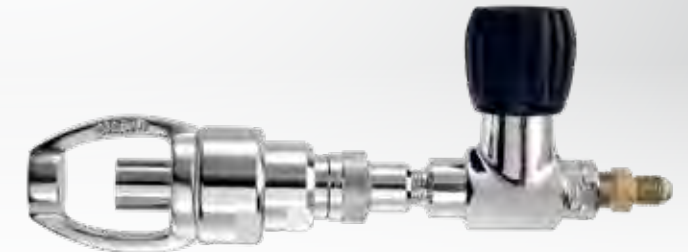
- Intermediate pressure gauge
- Used for adjusting 2nd stage air inlet
- Works with hexagonal or flat head attachment
- Simple operation
- Essential safety equipment

**CT-7****Quick-Connect YOKE Tank Pressure Gauge****YK03****DIN-to-Yoke 1st Stage Converter****FEATURES:**

- Material: chrome-plated brass
- Compatible with: G5/8 200 bar or G5/8 300 bar DIN first stage connector
- Maximum working pressure: 232 bar (3365 psi)

**YK04****DIN-to-Yoke Tank Valve Converter****FEATURES:**

- Material: chrome-plated brass
- Compatible with: 200 bar DIN tank valve with female G5/8 thread

**YK-05****Quick-Connect YOKE****YK-06****Quick-Connect YOKE with Isolation Cross Bar****YK-07****YOKE Tank Filler Adapter**





**SPARE AIR** is the smallest redundant scuba system available with enough air to get you to the surface in an out-of-air emergency. The patented SPARE AIR should be a standard piece of scuba diving equipment for the safety-minded diver. Explore the wealth of information about our product and diving in general. Our goal is to convince you to save your own life in an out-of-air emergency.



SPARE AIR SPECIFICATIONS

MODEL NUMBER	600PK	300PK / 300PK-N	170PK / 170PKX
MAX. CAPACITY	170 L (6.0 cu ft)	85 L (3.0 cu ft)	48 L (1.7 cu ft)
LENGTH	13.5 in	13.4 in	8.75 in
DIAMETER	3.25 in	2.25 in	2.25 in
MAX. PRESSURE	207 bar (3000 psi)	207 bar (3000 psi)	207 bar (3000 psi)
WEIGHT (FULL)	1.7 kg (3.7 lb)	0.985 kg (2.17 lbs)	0.687 (1.51 lbs)
SURFACE BREATHS*	114	57	30
WATER VOLUME	0.88 L (54 cu in)	0.44 L (26.62 cu in)	0.23 L (13.8 cu in)

MODEL NUMBER	PRODUCT DESCRIPTION
600PK	PACKAGE INCLUDES MODEL 600YEL, 973, 961 & 910S
300PK	PACKAGE INCLUDES MODEL 300YEL, 973, 961 & 910S
170PK	PACKAGE INCLUDES MODEL 170YEL, 971, 961 & 910S
300PK-N	PACKAGE INCLUDES MODEL 300-N, 973, 961 & 910S (NITROX)
170PKX	PACKAGE INCLUDES MODEL 170X & 974



**003DGS**  
Dial Gauge Pressure Indicator

**094X**  
Overhaul Kit

**920C**  
Air Compressor Refill Adapter

**910S**  
Air Compressor Refill Adapter

**961**  
Safety Leash

**963**  
Travel Pack

**974**  
Neoprene Vest with Mouthpiece Cover

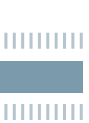
**971**  
Holster

**973**  
Holster

**BAG**  
Special Air-Carrying Bag

MODEL NUMBER	DESCRIPTION
003DGS	Dial Gauge Pressure Indicator (3000 psi)
094X	Overhaul Kit (Includes poppet, poppet seat, 4 #015 O-rings, filter, burst disc, nylon washer, tank O-ring, VIP sticker and check valve stem with O-ring)
910S	Scuba Tank Refill Adapter - Yoke Style (fills Spare Air unit from any standard scuba tank)
920C	Air Compressor Refill Adapter
961	Safety Leash
963	Travel pack includes durable plastic carrying bag. Three extra tank O-rings, protective caps for both the regulator and cylinder threads and silicone lube
971	Holster for 1.7 cu ft units
973	Holster for 3.0 cu ft units
974	Neoprene vest with mouthpiece cover/lanyard for 1.1 and 1.7 cu ft units. One size fits all
BAG	Special Air-Carrying Bag





TANK ACCESSORIES



**DC-2P**  
▪ Colors: Plastic: BK



**VP-3**  
▪ Colors: B, BK



**TP-1**  
**FEATURES:**  
▪ Minimizes scuffing on tank surface  
▪ Fits tank with diameter between 6.9-7.25 in  
▪ Colors: B, BK, NY



**TH-1**



**VP-4P**  
▪ Colors: BK, G



**TA-NY**  
**FEATURES:**  
▪ For underwater use. The super-stretchy silicone band can wrap around any dive cylinder from 6 in and up. The hard plastic ball can be pulled and released, producing noise to attract attention.

**TB1**

- FEATURES:**
- Fits tank with Ø 7.25 in
  - Drainage channels and holes



**TB2**

- FEATURES:**
- Fits tank with Ø 7.25 in
  - Drainage channels and holes



**KC01A**  
**FEATURES:**  
▪ O-ring hook included  
▪ O-ring includes:

- Ø 11 mm x 2.4 mm (1)
- Ø 14 mm x 2.4 mm (3)

▪ Colors: B, G, SV

ITEM NUMBER	DC-2P	VP-3	VP-4P	TH-1
DESCRIPTION	DIN 1st Stage Dust Cap (G 5/8)	Yoke Valve Dust Cover	Plastic DIN Valve Dust Cap	1.5 in Tank Carrying Handle

ITEM NUMBER	TP-1	TB1	TB2	TA-NY	KC01A
DESCRIPTION	Tank Protector	Plastic Tank Boot	Rubber Tank Boot	Tank Banger	Tank Shaped Key Ring

DIVING MASKS



MP201-BS-B



MP201-BS-NY



MP201-W/PR



MP201-CB



MP201-BS-BK

**MP-201**  
**MP-201-AF** **NEW**

PROTEUS Twin Lens Scuba Diving Snorkeling Mask

- FEATURES:**
- Designed to comfortably fit a wide range of facial profiles
  - Tempered, scratch-resistant glass lenses for maximum clarity and safety
  - Buckles attach to skirt and will not interfere with fitting
  - Hypoallergenic silicone skirt resists pressure and remains comfortable at depth
  - Mask can be folded flat for compact packing, ideal for use in a tech redundancy kit
  - New design with tinted lenses ensures UV protection and enhance colors
  - **Optical lenses available for in diopter from -1.0 to -8.0 in -0.5 decrements**
  - **Anti-fog lenses available**





MP112-P/PR



MP112-BS-PR

## MP-112

### BURANO Dive Mask

#### FEATURES:

- Ultra-soft and comfortable single-lens silicone mask
- Metal-like color painting technology



M27-BS/SS-BK



M27-BS



M27-BS/SS-B



M27-BS/SS-HP

## M27-BS

### TORTUGA Traditional Oval Single-Lens Mask

#### FEATURES:

- Classic, traditional single lens mask in retro oval shape
- Tempered-glass, scratch-resistant window for clarity and safety
- Liquid-injected silicone skirt and strap for comfortable seal
- Easily adjustable buckles and strap for precise fit
- Great underwater photography mask; a favorite among diving traditionalists



MP208-BS



MP208-W

## MP208

### ATUM Dive Mask

#### FEATURES:

- Frameless twin lens mask constructed of soft, hypoallergenic liquid silicone
- Low interior volume ensures easy clearing, reduces drag in the water
- The Atum offers a broader field of vision with an ultra low volume making the mask have a wider field of vision
- The angled shape of the nose bridge gives you minimal drag during decent, making the Atum streamlined and easy to use
- Matte finish



MP110-W

## MP110

### Frameless Single-Window Diving Snorkeling Mask

#### FEATURES:

- Frameless mask made from hypoallergenic liquid silicone
- Tempered-glass lens for maximum clarity and safety
- Dual-edge layer seal around lens keeps water out
- Adjustable mask buckles attach to skirt to reduce weight and allow mask to fold flat for travel
- Comfortably fits a wide range of facial profiles



M300BS-W

## M300

### SYCLOPS Single-Lens Aluminum Frame Diving Snorkeling Mask

#### FEATURES:

- Hypoallergenic liquid silicone skirt; single-lens aluminum frame
- Adjustable buckles attach to skirt for compact storage and weight reduction
- Comfortably fits a wide range of facial profile
- Tempered-glass single lens ensures clarity and safety

-MORE COLORS AVAILABLE-



MP110-BS



MP110-C

-MORE COLORS AVAILABLE-



M300BS-BK



M300BK-BK



LOW PROFILE

IDEAL FOR RENTAL

M100-BS-BK

-MORE COLORS AVAILABLE-



M100-T



M100-BS-T



M100-HP



M100-BS-HP



M100-SV



M100-BS-SV



M100-BK

## M100

PANORAMA 2-Window Aluminum Frame  
Scuba Diving/Snorkeling Mask

### FEATURES:

- Original IST aluminum mask with skirt made from hypoallergenic liquid silicone
- Adjustable mask buckles attach to skirt for easy storage and weight reduction
- Comfortably fits a wide range of facial profile
- Tempered glass twin lenses ensure clarity and safety

LOW VOLUME MASK



M200R

-MORE COLORS AVAILABLE-



M200-BS-R



M200-CB



M200-BS-BK



M200-BK



M200-BS-CB

## M200

SYNTHESIS 2-Window Aluminum Frame  
Scuba Diving/Snorkeling Mask

### FEATURES:

- Hypoallergenic liquid silicone skirt; single-lens aluminum frame
- Adjustable buckles attach to skirt for compact storage and weight reduction
- Comfortably fits a wide range of facial profile
- Tempered-glass single lens ensures clarity and safety
- Optical lenses for M200 are available in diopter from -1.0 to -8.0 in -0.5 decrements**
- Optical lenses are available from +1.0 to +4.0 in 0.5 increments**
- Lenses are interchangeable**

NEW

LOW PROFILE



MP203-BS



MP203-MB



MP203-C



MP203-W

## MP203

MP203-AF **NEW**

HUNTER Twin-Lens Low-Volume Diving Mask

### FEATURES:

- Tempered, scratch-resistant glass lenses for maximum clarity and safety
- Compact mask with low internal volume for easy clearing
- Swiveling buckles attach to the skirt and will not interfere with fitting
- Matte black skirt won't reflect light, making it easier to avoid startling creatures underwater
- Mask can be folded flat for compact packing; ideal for use in a tech redundancy kit
- Anti-fog lenses available**

OPTICAL AVAILABLE



M80-BS-NY



M80-BS-06



M80-06

## M80

SEARCH Twin Lens Scuba Diving/Snorkeling Mask with Rx Lens Option

### FEATURES:

- Silicone skirt with low volume and comfortable edge seal
- Swivel buckles; adjustable to fit all adults
- Lightweight and durable polycarbonate frame
- Dual-tempered, scratch-resistant glass lenses for maximum clarity and safety
- Optical lenses are available in diopter from -1.0 to -8.0 in -0.5 decrements**
- Optical lenses are available from +1.0 to +4.0 in 0.5 increments**
- Lenses are interchangeable.**

LOW PROFILE



M88-BS-BK

-MORE COLORS AVAILABLE-



M88-CB



M88-CO



M88W-MK

## M88

### BLUETECH Twin Lens Scuba Diving Snorkeling Mask

#### FEATURES:

- Designed to comfortably fit a wide range of facial profiles
- Tempered, scratch-resistant glass lenses for maximum clarity and safety
- Hypoallergenic silicone skirt resists pressure at depth, remains comfortable
- Bendable buckles attach to the skirt, will not interfere with fitting
- Mask can be folded flat for compact packing, ideal for use in a tech redundancy kit

-MORE COLORS AVAILABLE-



M75-BS-GN



M75-LY



M75-BS-BK



M75-NY



M75-BS-O



M75-CT



M75-W



M75-P



M75-PR

IDEAL FOR RENTAL



M75-CB

## M75

### MARTINIQUE Dual-Window Diving/Snorkeling Mask

#### FEATURES:

- Stylish, twin-lens diving/snorkeling mask for medium to large facial profiles
- Twin-injected sub-frame; skirt made from hypoallergenic liquid silicone
- Quickrelease buckles attach to the frame for compact storage and reduced weight
- Tempered glass twin lenses ensure clarity and safety

IDEAL FOR RENTAL



M75-1-PB/W

-MORE COLORS AVAILABLE-



M75-1-CB



M75-1-NY



M75-1-WP

## M75-1

### MARTINIQUE Narrow Dual-Window Diving Snorkeling Mask

#### FEATURES:

- Narrower version of IST Martinique, to fit narrower/smaller facial profiles and youth divers
- Quick-release buckles attach to the frame for compact storage and reduced weight
- Twin-injected sub-frame, skirt made from hypoallergenic liquid silicone
- Tempered glass twin lenses ensure clarity and safety



NEW



M55-BS/CH

## M55 / M55-AF NEW

CORONA Twin-Lens Scuba Diving and Snorkeling Mask with Rx Lens Option

### FEATURES:

- Silicone skirt with low volume and comfortable edge seal
- Swivel buckles are adjustable to fit all adults
- Lightweight and durable polycarbonate frame
- Dual-tempered, scratch-resistant glass lenses for maximum clarity and safety
- **See below for optical lenses options**
- **Anti-fog lenses available**

IDEAL FOR RENTAL



M55-BS-NY



M55-BS-B



M55-BK



M55-BS



M55-NY



M55-B

-MORE COLORS AVAILABLE-

OPTICAL AVAILABLE

## OPTICAL LENS

### OL55

M55 Corona Optical Lens

### FEATURES:

- Optical lenses for the M55 CORONA, ME55 ProEar masks are available in diopter -1.0 to -8.0 in -0.5 decrements and from +1.0 to +4.0 in 0.5 increments (for OL55 only)
- Left and right lenses are interchangeable



OL55

### OL55S

M55 Corona Bifocal Lens

### FEATURES:

- Bifocal lenses for the M55 CORONA, ME55 ProEar masks are available in diopter from +1.0 to +4.0 in 0.5 increments
- Left and right lenses are NOT interchangeable



IDEAL FOR RENTAL

M9-B



## M9

Saturn 2-Window Diving and Snorkeling Mask, Rx Lenses Available

### FEATURES:

- High-quality silicone skirt seals securely without binding
- Unparalleled comfort and fit for average to wide facial profiles; great for all-day wear
- Dual-tempered glass lenses provide an exceptionally wide field of view
- Wide, easily adjustable strap creates a snug fit without excess pressure
- **Prescription optical lenses are available in diopter -1.0 to -8.0 in -0.5 decrements**
- **Lenses are not interchangeable**

-MORE COLORS AVAILABLE-



M9-BS



M9-BS-NY



M9-BS-B



M9-BS-GN



M9-C

### OL201

MP201 Proteus Optical Lens

### FEATURES:

- Optical lens for MP201 PROTEUS
- Available in diopter -1.0 to -8.0 in -0.5 decrements
- Left and right lenses are not interchangeable



### OL4

M9 Saturn Optical Lens

### FEATURES:

- Optical lenses for M9 SATURN are available in diopter -1.0 to -8.0 in -0.5 decrements
- Left and right lenses are not interchangeable



### OL80

Optical Lens for M80, ME80 and M200

### FEATURES:

- Optical lenses are available in diopter -1.0 to -8.0 in -0.5 decrements and from +1.0 to +4.0 in 0.5 increments
- Left and right lenses are interchangeable



IDEAL FOR  
RENTAL

M50-B



-MORE COLORS AVAILABLE-



M50-BS



M50-BK



M50-NY

## M50

### SHADOW Single Window Diving Snorkeling Mask

#### FEATURES:

- Single-lens mask in a classic, squared shape
- Durable, high impact plastic frame
- Tempered glass lens for clarity and safety
- Silicone skirt and easy-adjust strap for fit, great seal and comfort



## M2R

### AQUILA Traditional Single Lens Mask with Nose Purge

#### FEATURES:

- Classic, traditional single lens mask
- Tempered-glass, scratch-resistant window for clarity and safety
- High-grade rubber skirt and strap for great seal and comfort
- Easily adjustable buckles and strap for precise fit
- A favorite mask among diving traditionalists

M12-BS



## M12

### IMPERIAL Panoramic View Hands-Free Water Clearance Mask

#### FEATURES:

- Panoramic mask offers maximum field of vision underwater
- Built-in purge provides hands-free water clearance for convenience
- Tempered-glass, scratch-resistant lens for clarity and safety
- Silicone skirt and easy-adjust strap for fit, great seal and comfort
- Durable, high-impact plastic frame with quick-release swiveling buckles

-MORE COLORS AVAILABLE-



M12-CB



M12-NY



M12-CGN

-MORE COLORS AVAILABLE-



M45-CB



M45-BS-BK

M45-MK



## M45

### VENUS Oversized Single Lens Tempered-Glass Scuba Diving/Snorkeling Mask

#### FEATURES:

- Oversized single lens frame is perfect for medium to large faces; accommodates mustaches
- Lens is angled toward the face to increase range of vision in all directions
- High-grade liquid-injected silicone skirt and strap for exceptional comfort and snug fit
- Multiple color combinations available





## ME55 ME55-AF NEW

ProEar Pressure Equalization Mask with Watertight Ear Cups

### FEATURES:

- Special tube-and-seal system automatically equalizes ear pressure as diver exhales into mask
- Prevents pressure-induced earache (barotrauma)
- Enhanced underwater hearing and sense of direction
- Watertight ear cups keep water out to keep ears warm and prevent infection

OPTICAL  
AVAILABLE



OL55

\* See page 72 for more options



ME80-06

## ME80

ProEar Pressure Equalization Mask with Watertight Ear Cups

### FEATURES:

- Special tube-and-seal system automatically equalizes ear pressure as diver exhales into mask
- Prevents pressure-induced earache (barotrauma)
- Enhanced underwater hearing and sense of direction
- Watertight ear cups keep water out to keep ears warm and prevent infection
- **Optical prescription lens option available in diopters +1.0 to +4.0 in 0.5 increments**
- **Prescription lenses are also available from -1.0 to -8.0 in -0.5 decrements**

OPTICAL  
AVAILABLE



OL80



ME80-CB

## ME67-CB

ProEar Pressure Equalization Mask,  
Protect Ears from Polluted Water

### FEATURES:

- Special tube-and-seal system automatically equalizes ear pressure as diver exhales into mask
- Prevents pressure-induced earache (barotrauma)
- Enhanced underwater hearing and sense of direction
- Watertight ear cups keep water out to keep ears warm and prevent infection



## ME59-CB

Kids ProEar Pressure Equalization Mask  
with Watertight Ear Cups

### FEATURES:

- Special tube-and-seal system automatically equalizes ear pressure as diver exhales into mask
- Prevents pressure-induced earache (barotrauma)
- Enhanced underwater hearing and sense of direction
- Watertight ear cups keep water out to keep ears warm and prevent infection
- A great mask choice for kids who are prone to earaches and ear infections

## PG-HD-6 / HD-6

Dual-Layer 5 mm Neoprene Dive Hood,  
Use with ProEar Mask

### FEATURES:

- Dive hood specially designed for use with our ProEar mask line
- Constructed with two layers of 2.5 mm neoprene
- Special stretchable front panels allow for easy adjustment
- Smooth skin face and ear seals reduce seepage
- Protects your ProEar mask and holds it securely in place
- **Available sizes: S, M, L, XL, XXL**



PG-HD-6

NEW





M27  
TORTUGA Traditional Oval Single-Lens Mask

- FEATURES:
- Classic, traditional single lens mask in retro oval shape
  - Tempered-glass, scratch-resistant window for clarity and safety
  - Liquid-injected silicone skirt and strap for comfortable seal
  - Easily adjustable buckles and strap for precise fit
  - Great underwater photography mask; a favorite among diving traditionalists
  - Available in clear silicone or rubber



M37  
PEGASUS Full-Face 2-Window

- FEATURES:
- No need to bite onto mouthpiece; eliminates jaw fatigue and/or denture slippage
  - Multi-strap adjustment comfortably fits all adults; easy nose access for equalization
  - All-environment full face mask
  - Allows for the attachment of most types of regulators
  - Tempered-glass lenses for maximum strength and clarity
  - Available in black silicone or rubber

Sturdy mask packaging boxes and pouches. Great for product presentation and personal equipment storage.



MB02  
MB08  
MB07  
MB09



MS20  
Comfortable Neoprene Mask Strap Cover

- FEATURES:
- Wide neoprene mask strap cover with hook-and-loop closure
  - Spreads strap pressure to prevent scalp pain; offers a more secure hold
  - Smooth neoprene surface won't snag hair
  - Fits any standard mask strap



ITEM NUMBER	DESCRIPTION	COLOR
MS20	Patterned Neoprene Mask Strap Cover	AN, BW, F, ML
MS20	Solid Neoprene Mask Strap Cover	B, BK, NY, P



AF-3  
Anti-Fog Gel

- FEATURES:
- 1 oz
  - Anti-fog protection for multiple dives
  - Long-lasting, non-toxic formula



AF-4  
Anti-Fog and Lens Cleaner

- FEATURES:
- 30 mL (1 oz)
  - 2-in-1 formula has both an anti-fogger and lens cleaner
  - Long-lasting, non-toxic formula



AF2

MS-11

MS-11P

MS-11R

MS-14

MS-14R



MS-17



MS-25



MS-80

ITEM NUMBER	AF2	AF2/DOZ	AF-3	AF-3/DOZ	AF-4	AF-4/DOZ
DESCRIPTION	Anti-Fog Spray	Anti-Fog Spray 1 Dozen	Anti-Fog Gel	Anti-Fog Gel 1 Dozen	Anti-Fog and Lens Cleaner	Anti-Fog and Lens Cleaner 1 Dozen

ITEM NUMBER	MS-11	MS-11P	MS-11R	MS-14	MS-14R	MS-17	MS-25	MS-80
DESCRIPTION	Mask Strap	Mask Strap - PVC	Mask Strap - Rubber	Mask Strap for M-37 Pegasus Mask - Silicone	Mask Strap for M-37 Pegasus Mask - Rubber	Webbing Mask Strap	Silicone Mask Strap	Pro Ear Silicone Mask Strap
COLOR	C, BS	C, BS	Rubber	BS	R	BK	BS, C, W, GN	BS, C



SN104-CT



SN104-BS-BK



SN104-CB



SN104-BS-R



SN104-BS-NY

SN-104  
Dry-Top Snorkel

- FEATURES:
- Silicone mouthpiece and purge valve for easy clearing
  - Splashguard top efficiently keeps water out of tube
  - 360-degree swiveling mouthpiece
  - Main tube is made from environmentally-friendly PU material

SN-203  
Dry-Top Snorkel for Scuba Diving and Snorkeling

- FEATURES:
- Float buoy plus pivot valve design prevents water from entering the tube when submerging
  - Covered top prevents water from splashing in while at the surface
  - Hypoallergenic, high-grade silicone mouthpiece with bite tabs for comfort and reduced jaw fatigue
  - Flexible center hose ensures the snorkel falls away from the face when mouthpiece is released
  - Quick-release swiveling snorkel holder
  - Available colors: BK, CB, NY



Pat Dry Top System



## SN204

### Dry-Top Snorkel for Scuba Diving and Snorkeling

The next generation of our popular SN-203 snorkel includes a totally redesigned, patent-pending dry top. SN-204 employs a precision-engineered hinge system and more rounded float to prevent unintended blockage of the airway at the surface while still keeping water out when submerged.

#### FEATURES:

- Covered top prevents water from splashing in at the surface
- Hypoallergenic, high-grade silicone mouthpiece with bite tabs for comfort and reduced jaw fatigue
- Flexible center hose ensures the snorkel falls away from the face when the mouthpiece is released
- Quick-release, swiveling snorkel holder
- Generous purge chamber and valve
- **Black silicone color option available**



SN204-BS-CB SN204-BS-HP SN204-BS-NY SN204-BS



SN204-CB SN204-HP SN204-W SN204-NY

## SN60

### Semi-Dry Soft-Flex Silicone Tube Snorkel

#### FEATURES:

- Proprietary top deflector keeps water from splashing in while at the surface
- Drop-away, flexible corrugated lower section makes it easy to switch to regulator
- Bottom purge valve for quick, simple clearing underwater
- Adjustable, quick-release snorkel keeper
- Hypoallergenic silicone mouthpiece with bite tabs reduces jaw fatigue



SN60-BS-BK SN60-BS-GN SN60-BS-O SN60-BS-MK



SN60-BS-CT SN60-BS-NY SN60-BS-HP



SN60-BK SN60-CB SN60-PB SN60-PR SN60-P SN60-NY SN60-LY SN60-CO SN60-HP SN60-CT SN60-W

## SN301

### Non-Purge Foldable Freediving and Spearfishing Snorkel with Holder

FOLDABLE  
SNORKEL

#### FEATURES:

- Matte black design
- Proven classic, no-nonsense design
- Non-purge foldable snorkel with a stout snorkel holder
- Easy to tuck into a BCD pocket for tech redundancy or use as a spare snorkel
- Anatomically-shaped, hypoallergenic mouthpiece for a comfortable fit
- Mouthpiece includes bite tabs and s-angle shape to eliminate jaw fatigue and ensure easy breathing

NEW



SN301-BS-O

## SN-85

### Dry-Top Soft Flex Tube Drop Away Snorkel

#### FEATURES:

- Dry-top snorkel with top baffle system to keep water out while at the surface
- Flexible, corrugated lower section drops away to easily switch to regulator
- Bottom purge valve makes water clearing underwater quick and easy
- Adjustable quick-release snorkel keeper
- Hypoallergenic silicone mouthpiece with bite tabs reduces jaw fatigue
- **Available colors: BK, CB, NY**



## SN36

### Flexible Foldable 100% Silicone Non-Purging Snorkel

FOLDABLE  
SNORKEL

#### FEATURES:

- 100% top-grade silicone construction; a snorkel you can fold up for compact storage
- Great to tuck into a BCD pocket for tech redundancy or use as a spare snorkel
- Anatomically-shaped, hypoallergenic mouthpiece for a comfortable fit
- Mouthpiece includes bite tabs and s-angle shape to eliminate jaw fatigue, ensure easy breathing
- Proven classic no-nonsense design
- **Available colors: BS, W, SV, MB, GN**



SN36-SV

SN36-MB

SN36-GN



SN36-BS



SN36-W



CS01-BS-LY

## CS01/CSJ01

### Snorkeling Combo Set for Adults and Kids

#### FEATURES:

- Semi-dry-top snorkel with one bottom purge and full-flex section
- Dual-window mask with tempered glass, teardrop lenses for a wide field of view
- Ergonomically-designed snorkel holder with quick-release tab
- Hypoallergenic, soft silicone mouthpiece with bite tabs for a firm, comfortable grip
- Quick-dry mesh bag for storage and transport

Mesh Bag Included

-MORE COLORS AVAILABLE-



CS01-BS-GN

CS01-BS-V

CS01-BS-P

CS01-BS-O



CS01-CB

CS01-W

CS01-LY

CS01-GN

CS01-PR

CS01-P

CS01-O



CF01-BS-GN

## CF01

### ORBIT Snorkel Set

#### FEATURES:

- Tempered-glass, single-lens mask fits a wide range of facial profiles with unobstructed panoramic view
- Adjustable mask buckles attached to the frame for simple and compact storage
- Non-vented, open-heel trek fins; ideal for snorkeling and bodyboarding
- Cutting-edge naturally-curved dry-top to stay dry; hypoallergenic mouthpiece eases jaw fatigue
- Convenient, compact, fast-drying mesh bag to fit the whole set in; good for travel
- **Available sizes: small (2 - 5), medium (5 - 8)**



Mesh Bag Included



CF01-BS-BK



CF01-BK



CF01-PK



CF01-W-CB



CF01-W-CP





MP1 MP1-M MP1-10 MP1-M10 MP2



MP5 MP6 MP7 P1



P1-1 P1-2 SH-1 SH60

ITEM NUMBER	DESCRIPTION	COLOR
MP1	Regular Mouthpiece	BS, C, PVC, Rubber
MP1-M	Mini Mouthpiece	BS, C
MP1-10	Regular Mouthpiece 10 Pcs	BS, C
MP1-M10	Mini Mouthpiece10 Pcs	BS, C, PVC, Rubber
MP2	Comfort Mouthpiece	BS, C
MP5	Ergonomic Mouthpiece	BS, C
MP6	Moldable Mouthpiece	BS
MP7	Comfort Mouthpiece	BS, C
P1	Complete Purge Valve	C
P1-1	Purge Diaphragm	C
P1-2	Purge Diaphragm	C
SH-1	Silicone Snorkel Holder	C, BS
SH60	Snorkel Holder for SN60	BK



FP01  
SUMI Innovative Propulsion Efficiency Open-Heel Scuba Diving Fins

- FEATURES:
- 22 in blade-to-foot angle provides maximum kicking efficiency
  - Multi-material engineering combines strength and comfort
  - Six water channeling guides direct water backward for added power
  - Propulsion-optimized design reduces diver fatigue and air consumption
  - Open-heel foot pocket with quick-release strap buckles and extra-large thumb loop for quick donning and doffing
  - Available colors: B, BK, NY

SIZES	XS	S	M	L	XL
US	5 - 7	7 - 8	8 - 9	10 - 11	12 - 13
EURO	36 - 38	38 - 39	40 - 42	42 - 45	46 - 48



FK30  
Speedy Snorkeling, Scuba, Watersport Fins

- FEATURES:
- Designed to wear barefoot with broad size range
  - Open-heel general-purpose fins made from lightweight, durable materials
  - Stylish blade features vents and center molding that directs water backward to increase propulsion while minimizing fatigue
  - Thermoplastic rubber (TPR) on the underside of the foot pocket for traction
  - Drainage holes on the underside of the foot pocket
  - Adjustable straps with thumb loops
  - Available colors: BK, B, W
  - Available sizes: S/M, L/XL

IDEAL FOR  
RENTAL





IDEAL FOR RENTAL

## CF22

BORA BORA Power Open-Heel Scuba and Spearfishing Fins

- FEATURES:**
- Open-heel fins with straps for scuba diving or spearfishing
  - Rigid, angled blade maximizes propulsion and minimizes fatigue
  - Elastic center membrane directs water backward to reduce drag
  - Roomy foot pocket accommodates larger booties
  - Quick-release buckles and extra-large thumb loops
  - **Available colors:** BK, B
  - **Available sizes:** S/M, L/XL, XL/XXL

SIZES	S/M	L/XL	XL/XXL
US	6 - 8	9 - 10	11 - 12
EURO	36 - 41	42 - 44	45 - 47

NEW

## FP02

Safari Ultra-Light fin

IST Safari Ultra-Light fin brings the most, comfort and convenience yet performs powerful thrust output **One-piece desing, made from a special compounded formula TPR material eliminates every possible break point caused by connecting two different materials.**  
**A softer stiffness is made for the size of XS/S of the fin for an easier access for female and youth divers.**  
Only 1.9kg (4.2lb) for size L/XL, your best choice for travelling ever.  
Compatible with IST FS-15 silicone bungee fin strap for optional upgrades.

- **Sizes:** S: 22cm, M: 25cm, L: 28cm
- **Available sizes:** XS/S, M/L, L/XL

SIZES	XS/S	M/L	L/XL
US	5 - 7	8 - 10	11 - 13
EURO	36 - 39	40 - 43	45 - 48



HEAVY-DUTY

## F1

Heavy-Duty Rubber Rocket Fins for Deep Sea Diving and Military Special Ops

- FEATURES:**
- Traditional rubber fin with a proven rugged design
  - Ideal for use when training for Special Ops military programs: the #1 choice of U.S. military personnel
  - Special blade curvature, varying degrees of flexibility and well-positioned structural ribs for positive forward thrust with spring-like energy return
  - Open vents efficiently channel water to the rear, adding power to every kick
  - Provides power in open-water dive missions and maneuverability within confined spaces
  - **Available sizes:** M, L, XL, XXL, XXXL

SIZES	M	L	XL	XXL	XXXL
US	5	6 - 7	8 - 9	10 - 11	12 - 13
EURO	36	37 - 39	40 - 42	43 - 45	46 - 48



HEAVY-DUTY

## F4

F4 Propulsion Rubber Rocket Diving New Design Military Fins

- FEATURES:**
- Updated version of our F1 Military Rubber Rocket fin, with a shorter and wider blade
  - Ideal for use when training for Special Ops military programs
  - Special blade curvature, varying degrees of flexibility and well-positioned structural ribs for positive forward thrust with spring-like energy return
  - Open vents and perforations on the blade efficiently channel water to the rear, adding power to every kick; quick-release buckles
  - Provides power in open-water dive missions, maneuverability within confined spaces
  - **Available sizes:** M, L, XL

SIZES	M	L	XL
US	7 - 9	9 - 11	11 - 13
EURO	36 - 38	39 - 42	43 - 46

## FS-15

Bungee Fin Strap

- FEATURES:**
- New ultra-stretchy rubber bungee fin strap system
  - Super simple to use and no adjustments needed
  - Fits to IST FP-01, F-6, F-4 and CF-22 fins
  - Enlarged pull loop for easy donning and doffing
  - **Sizes:** S (8.66 in), M (9.84 in), L (10.63 in)



IDEAL FOR  
RENTAL

## F12

### SEA DIVER Classic Rubber Closed-Heel Fins for Adults and Kids

#### FEATURES:

- Durable, comfortable rubber fins
- Very flexible and powerful; easy to maneuver
- Open toe box for quick drainage
- Classic design with upright ribs channels water
- Sturdy yet affordable; entry-level fin

▪ **Available sizes: 4XS-XL**

▪ **Available colors: BK**



SIZES	XXXXS	XXXS	XXS	XS	S	M	L	XL
US	10 - 12	12 - 1	1 - 3	3 - 5	5 - 7	7 - 9	9 - 11	11 - 13
EURO	30 - 32	32 - 34	34 - 36	36 - 38	38 - 40	40 - 42	42 - 44	44 - 46

## FK31

### OTTER Dive Fin

#### FEATURES:

- Open toe box to facilitate drainage
- Designed for barefoot use with broad size range
- Durable design; ideal for rental use

▪ **Available colors: BK, B, W**

▪ **Available sizes: small (4-7), medium (7-10), large (10-13)**



IDEAL FOR  
RENTAL

## F20

### Super S Balanced Blade Full-Pocket Snorkeling Fins for Kids and Adults

#### FEATURES:

- Classic full-foot pocket snorkeling fins
- Balanced blade helps the wearer maintain balance in the water
- Open toe box for quick drainage
- Sturdy and durable enough to stand up to rental use
- Available in sizes for kids and adults

▪ **Available sizes: XXS-XXL**

▪ **Available colors: BK, B, NY**



SIZES	XXS	XS	S	M	L	XL	XXL
US	1 - 3	3 - 5	5 - 7	7 - 9	9 - 11	11 - 13	13 - 15
EURO	34 - 36	36 - 38	38 - 40	40 - 42	42 - 44	44 - 46	46 - 48

## COIL FIN STRAPS

Rust resistant stainless steel spring straps are ideal for technical and recreational diving applications. The main advantage is fins become easy to put on or take off when fitted. Comes in various buckle designs to suit different types of fins. Each style has 4 lengths for comfortable and secure fitting.



FS10

FS11

FS12



FS2



FS7



FSK31



FG1



FB1



FB7



FBK31

ITEM NUMBER	DESCRIPTION	SIZE
FS10 (PAIR)	Spring Fin Strap with complete IST FB7 Buckles	S - XXL
FS11 (PAIR)	Spring Fin Strap with metal "C" clip	S - XXL
FS12 (PAIR)	Spring Fin Strap with Stainless Steel Clip-On Buckles	S - XXL
FS2	Rubber Fin Strap for FB1 fin	N/A
FS7	Rubber Fin Strap for FB7	N/A
FSK31	Fin Strap for FBK31	N/A
FB1	Stainless Steel Fin Buckle for F1 Fin	N/A
FB7	Quick Release Fin Buckle for CF22, F4, F6, FP01	N/A
FBK31	Quick Release Fin Buckle for FK09, FK30, FK31	N/A
FG1 (PAIR)	Rubber Fin Grip	S, M, L



SCUBALAB  
**BEST  
BUY**  
2 0 1 8

ANTI-ABRASION PRINT

YKK #5 WRIST  
ZIPPERVELCRO REAR  
ZIPPER FLAPDURABLE NEOPRENE  
THICKNESS OPTIONSCALF  
COMPRESSION  
SLEEVES

NEW

ZN  
PURIGUARD

PURIGUARD

## PG-WS80 / PG-WS805 / PG-WS807 WS80 / WS805 / WS807

3 mm, 5 mm, 7 mm Diving Jumpsuits

### FEATURES:

- IST's new diving jumpsuits, constructed of high-grade neoprene in 3 mm, 5 mm and 7 mm thickness options
- Double flatlock in the 3 mm suit, double-blind in the 5 mm
- Super-stretch material at armpits and lower back area to maximize range of motion
- Special printing technique on shoulders and chest areas offers extra durability in areas prone to high wear when diving with a BCD
- Integrated calf compression sleeves improve blood circulation to stave off leg cramps and fatigue
- Convenient #5 YKK zippers at wrists and ankles
- Semi-dry technology is equipped on the 7 mm suit at wrists and ankles
- **Available sizes: men's S-4XL, women's 3-15**



NEW

ZN  
PURIGUARD

PURIGUARD

## PG-WS35 / WS35

3 mm Shorty with Super-Stretch Armpit Panels

### FEATURES:

- 3 mm nylon II neoprene construction for stretch, flexibility and insulation
- Super-stretch panels at armpit and lower back increase range of motion
- Double flat-lock stitching
- Special printing technique on shoulders and chest areas offers extra durability in areas prone to high wear
- Multi-panel, formfitting construction for comfort and mobility
- **Available sizes: men's S-4XL, women's 5-13**







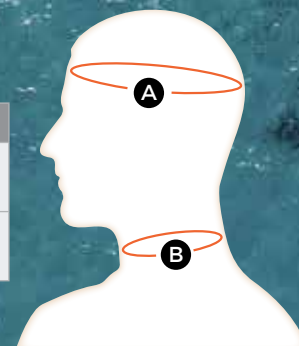
# IST NEOPRENE WETSUIT SIZE CHART

MENS	S	M	L	XL	XXL	XXXL	XXXXL
WEIGHT (LBS)	135 - 162	163 - 185	186 - 215	216 - 235	236 - 255	256 - 275	276 - 295
HEIGHT (IN)	5'3" - 5'5"	5'6" - 5'7"	5'8" - 5'11"	6'0" - 6'1"	6'2" - 6'3"	6'2" - 6'4"	6'2" - 6'4"
CHEST (IN)	36" - 37"	38" - 39"	42" - 43"	44" - 45"	46" - 47"	48" - 49"	50" - 51"
WAIST (IN)	29" - 31"	32" - 33"	35" - 37"	38" - 39"	40" - 41"	42" - 43"	44" - 45"
HIP (IN)	35" - 37"	38" - 39"	40" - 43"	44" - 45"	46" - 47"	48" - 49"	50" - 51"

WOMENS	5	7	9	11	13	13
WEIGHT (LBS)	110 - 121	121 - 132	133 - 143	144 - 154	155 - 165	154 - 165
HEIGHT (IN)	5'1" - 5'3"	5'3" - 5'5"	5'5" - 5'7"	5'7" - 5'9"	5'9" - 5'11"	5'9" - 5'11"
CHEST (IN)	33.5"	34.5"	36"	38"	40"	40"
WAIST (IN)	24"	25"	26"	28"	30"	36"
HIP (IN)	35"	37"	39"	41"	43"	43"

## HOOD SIZE CHART

SIZE	S	M	L	XL	XXL
<b>A</b> HEAD CIRCUMFERENCE (IN)	21"- 23"	23.5"- 25.5"	26"- 28"	28.5"- 30.5"	31"- 32.5"
<b>B</b> NECK CIRCUMFERENCE (IN)	14"-16"	17"-19"	18"-21.5"	18.5"-22"	18.5"-22.5"



## SIZE CHARTS FOR CWSJ0125, CWSS0130

MENS	S	M	L	XL	XXL	XXXL	XXXXL
WEIGHT (LBS)	135 - 155	150 - 175	190 - 215	210 - 235	230 - 255	250 - 275	270 - 290
HEIGHT (IN)	5'7" - 5'9"	5'9" - 5'11"	5'11" - 6'1"	6'0" - 5'10"	6'1" - 6'3"	6'2" - 6'4"	6'3" - 6'5"
CHEST (IN)	36" - 37"	38" - 39"	42" - 43"	44" - 45"	46" - 47"	48" - 49"	50" - 51"
WAIST (IN)	29 - 31	31 - 33	35 - 37	37 - 39	39 - 41	41 - 43	43 - 45
HIP (IN)	35" - 37"	37" - 39"	41" - 43"	43" - 45"	45" - 47"	47" - 49"	49" - 51"

WOMENS	3	5	7	9	11	13	15
WEIGHT (LBS)	99 - 110	110 - 121	121 - 132	132 - 143	143 - 154	154 - 165	165 - 174
HEIGHT (IN)	4'11" - 5'1"	5'1" - 5'3"	5'3" - 5'5"	5'5" - 5'7"	5'7" - 5'9"	5'9" - 5'11"	5'11" - 6'2"
CHEST (IN)	32"	33.5"	34.5"	36"	38"	40"	42"
WAIST (IN)	27"	29"	31"	33"	34"	36"	38"
HIP (IN)	33"	35"	37"	39"	41.25"	43"	45"

## NEOPRENE GEAR



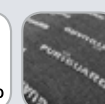
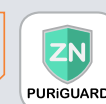
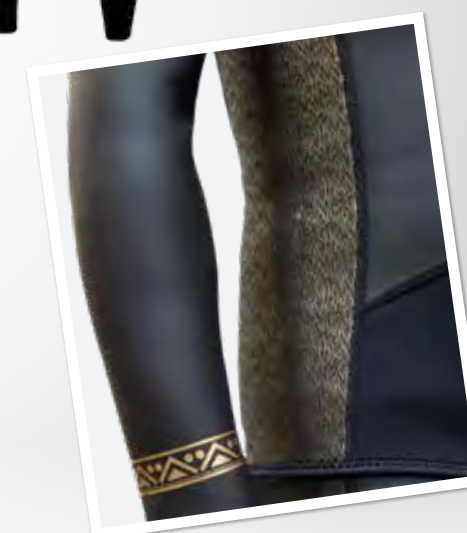
### WSH-03

2 mm 2-Piece Neoskin Freediving Wetsuit

#### FEATURES:

- Made from high-grade 2 mm Neoskin-lined neoprene with nylon fabric interior
- 2-piece wetsuit with top and pants
- Beaver tail with fabric-fastener system for easy, comfortable adjustment
- Flatlock-stitch construction
- Ideal for freediving

■ **Available sizes: men's S-XXL, women's 5-13**



### PG-SHN-01 / SHN-01

2 mm Neoprene Top

#### FEATURES:

- 1.5 mm neoprene top with super-stretch fabric at waist
- **Sizes: S-XXL**





NEW



PG-WP-5-BK

## PG-WP-5 / WP5

2 mm Nylon II Neoprene Watersport Rashguard and Dive Pants

### FEATURES:

- 2 mm nylon II neoprene pants for diving, snorkeling, spearfishing, paddleboarding and all other watersports
- Can be worn alone in warm water or layered under a wetsuit for cold-water use
- Zippers at ankle allow for better fit and easy donning and doffing
- Drawstring waist with locking toggle
- Printed protective knee panels
- **Available colors: BK/B, BK**
- **Available sizes: S-XXL**



PG-WP-5-BK/B



## CWSS0130

2.5 mm All-Purpose Adult Tropical/Temperate Watersport Shorty

### FEATURES:

- Nylon II stretchy neoprene is flexible and insulating
- Flatlock stitching throughout prevents chafing
- Flexible reinforced shoulder panels add extra durability in a high-wear area
- Multi-panel, formfitting construction for comfort and mobility
- Super-stretch panels at armpit increase range of motion
- **Available sizes: men's S-4XL, women's 3-15**
- **Available colors: B, P**

## WSS0150

Adult 5 mm Neoprene Front Zipper Shorty with Super-Stretch Panels

### FEATURES:

- 5 mm neoprene front zipper shorty; a great choice for suit layering
- Super-stretch armpit panels for uninhibited movement
- Heavy-duty, corrosion-free #10 YKK zipper at the front for extra-easy donning and doffing
- Zipper gusset and double blind-stitching throughout to reduce water seepage
- Snug, performance-enhancing fit; anti-abrasion shoulder surface
- **Available sizes: men's S-4XL, women's 5-13**
- **Available colors: BK**



## DH-2

Diver's Holster

### FEATURES:

- Made from 3mm neoprene
- Gives extra storage space to carry additional gear
- Additional D-rings served as the extra attachment points
- #10 rust-proof YKK zips
- **Available sizes: S/M, L/XL, XXL**



IDEAL FOR RENTAL



## CWSJ0125

2.5 mm Warm-Water Jumpsuit with Super-Stretch Panels

### FEATURES:

- 2.5 mm Nylon II stretch neoprene construction for flexibility and insulation
- Flatlock stitching throughout prevents chafing
- Flexible reinforced knee pads for extra durability in high-wear areas
- Multi-panel, formfitting construction for comfort and mobility
- Super-stretch armpit panels for unrestricted movement
- **Available sizes: men's S-2XL, women's 5-13**
- **Available colors: B, BK**

## PG-WJ0125 / WJ0125

2.5 mm Nylon II Long Sleeved Neoprene Jacket

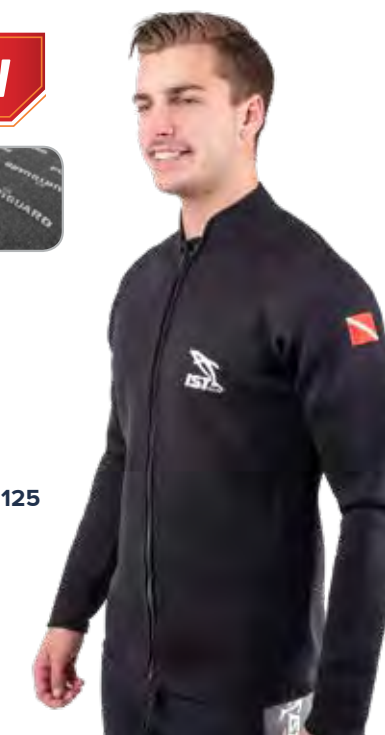
### FEATURES:

- Soft, flexible 2.5 mm nylon II neoprene construction
- Sturdy #10 YKK front zipper
- Flatlock stitching throughout to minimize chafing
- Taped edges prevent fraying
- Perfect for keeping warm after a dive or between dives
- **Available sizes: XS-XXL**

NEW



PG-WJ0125







GL04-BK/B

## GL04

### 2 mm Neoprene Gloves

#### FEATURES:

- Amara palm
- Right thumb and index fingertips open for shooting underwater photos
- **Sizes:** XS-XXL
- **Available colors:** BK/B, GB, GPR



GL04-GPR



GL04-GB

## S900

### 2 mm Neoprene Glove with Amara Leather Palms and Velcro Wrist Straps

#### FEATURES:

- Warm-water glove for maximum grip and fine motor control
- 2 mm neoprene back for stretch and comfort
- Amara palm and finger surfaces for reliable grip
- Velcro wrist straps ensure the best, non-slip fit
- Mesh drawstring storage bag with locking toggle included
- **Available sizes:** XS - XXL



## S660

### 5 mm Nylon II Neoprene Glove with Grip Dot Surface

#### FEATURES:

- 5 mm nylon II neoprene construction for stretch and warmth
- Grip dot pattern on palm prevents slippage
- Double-seal Velcro wrist strap with super-stretch gusset for a custom, non-slip fit
- Extra long design at wrist and cuff area for better seal to reduce water seepage
- Mesh drawstring storage bag with locking toggle included
- **Available sizes:** S-XXL



## S680

### 5 mm Neoprene Kevlar-Reinforced Fabric Lined Glove

#### FEATURES:

- Kevlar surfaces protect hands from cuts, punctures and bites, and provide added grip
- 5 mm fabric-lined neoprene for stretch and warmth
- Velcro wrist strap for a custom, non-slip fit
- A great safety glove spearfishing or tech, wreck or reef diving
- Ideal for warm to cool water conditions
- **Available sizes:** XS-XXL

**SUPER  
STRETCH**



## S326

### 2.5 mm Formfitting Super-Stretch Neoprene Gloves with Grip Dots

#### FEATURES:

- Super-stretch neoprene gloves for divers, snorkelers and all watersports in 2.5 mm thickness
- Help keep hands warm in temperate to cool water conditions without limiting mobility
- Formfitting and comfortable, will not hinder use of fingers and thumb
- Surface grip dots provide traction to hold on to slippery or smooth objects
- A glove that balances warmth, comfort and range of motion
- **Available sizes:** XS/S, M/L, XL/XXL



## S780

### 3 mm Neoprene Kevlar-Reinforced Fabric Lined Glove

#### FEATURES:

- Kevlar surfaces protect hands from cuts, punctures and bites, and provide added grip
- 3 mm fabric-lined neoprene for stretch and warmth
- Velcro wrist strap for a custom, non-slip fit
- A great safety glove spearfishing or tech, wreck or reef diving
- Ideal for warm to cool water conditions
- **Available sizes:** XS-XXL



IDEAL FOR  
RENTAL



## BT0430

### 3 mm Rental Diving Boots

#### FEATURES:

- 3 mm nylon II neoprene low-cut bootie with a stretchy ankle cuff
- Blind-stitched, glued seams
- Vulcanized rubber sole
- Wraparound toe and heel guards
- Large size mark on top perfect for rental use
- **Available sizes: 4-13**

## S38

### Versatile 3 mm Tropical Booties

#### FEATURES:

- Versatile 3 mm neoprene low-cut bootie with stretchy ankle cuff
- Blind-stitched, glued seams add durability and minimize water flushing
- Vulcanized rubber sole protects feet from rough or hot surfaces while providing traction
- Lightweight and durable
- **Available sizes: 1-13**



## S7

### 5 mm Titanium and Spandex-Lined Vulcanized Rubber Sole Diving Boots

#### FEATURES:

- Titanium and spandex-lined neoprene boots with vulcanized rubber sole
- All seams are blind-stitched and double-glued to keep water out and increase seam strength
- Toe and heel caps for additional support and protection
- Built-in fin strap cleat helps keep fin straps securely in place
- Ultra-durable #10 YKK zipper with inner gusset to prevent seepage
- **Available sizes: 4-13**



IDEAL FOR  
RENTAL



## S19

### 5 mm Nylon II High-Cut Diving Booties with Vulcanized Rubber Sole

#### FEATURES:

- 5 mm nylon II high-cut dive and watersport boots
- Fin strap cleat holds fin straps securely in place
- Vulcanized rubber sole with additional heel cap offers protection and durability
- Durable, lightweight boot is ideal for rental use
- Ultra-durable #10 YKK zipper with inner gusset prevents seepage
- **Available sizes: 1-15**

## B400

### Tall Boots with 10 mm Thick Felt Sole

#### FEATURES:

- Tall cut boots rise above the ankle
- 10 ml felt sole provides traction on slick surfaces
- 3 mm Neoprene Nylon II upper for warmth and flexibility
- Toe and heel caps protect high wear areas
- Heavy-duty #10 YKK zipper
- **Available sizes: 4-13**



## S7-65

### 6.5 mm Titanium and Spandex-Lined Vulcanized Rubber Sole Diving Boots

#### FEATURES:

- All seams are blind-stitched and double-glued to keep water out and increase seam strength
- Titanium and spandex-lined neoprene boots with vulcanized rubber sole
- Toe and heel caps for additional support and protection
- Built-in fin strap cleat helps keep fin straps securely in place
- Ultra-durable #10 YKK zipper with inner gusset to prevent seepage
- **Available sizes: 4-13**



## S55

### 5 mm Titanium-Lined Boots with Sneaker Soles

#### FEATURES:

- 5 mm heavy duty dive boots with athletic sneaker style sole for comfort
- Double-glued, blind-stitched construction prevents water seepage
- Titanium lining for added warmth
- Heel and toe caps for durability and extra protection
- Ultra-durable #10 YKK zipper with underlying flap
- **Available sizes: 4-13**



### SIZE CHART

US	#1	#2	#3	#4	#5	#6	#7	#8	#9	#10	#11	#12	#13	#14	#15
EURO	30	31/32	33	34/35	36	37/38	39	40/41	42	43/44	45	46/47	48	49	50/51
CM	18.5	20	21	22	23	24	25	26	27	28	29	30	31	32	33
SIZE	6XS	5XS	4XS	XXXS	XXS	XS	S	M	ML	L	XL	XXL	XXXL	4XL	5XL



BT-0530

Low-Cut Boots

FEATURES:

- Versatile 3 mm neoprene low-cut bootie with stretchy ankle cuff
- Flatlock-stitched seams add durability and minimize flushing
- Vulcanized rubber sole protects feet from rough or hot surfaces while providing traction
- **Available colors:** GB, GPR
- **Available sizes:** GB: 4-13, GPR: 4-9

BT-0530-GPR



BT-0530-GB

BT-0630

Tall Boots

FEATURES:

- 3 mm high-top (8 in) neoprene boots with vulcanized rubber sole
- All seams are flatlock-stitched for added durability and resistance to flushing
- Toe and heel caps for added support and protection
- Built-in fin strap cleat helps keep fin straps securely in place
- Ultra-durable #10 YKK zipper with inner gusset to prevent seepage
- **Available colors:** GB, GPR
- **Available sizes:** GB: 4-13, GPR: 4-9

BT-0630-GPR



BT-0630-GB

BT0130

3 mm Diving Boots

FEATURES:

- 3 mm nylon II neoprene boots with a vulcanized sole
- All seams are blind-stitched to increase seam strength and keep water out
- Toe and heel caps for additional support and protection
- Built-in fin strap cleat helps keep fin straps securely in place
- Ultra-durable #10 YKK zipper with inner gusset prevents seepage
- **Available sizes:** 4-12



SKB-SB

SKB-BK

SKB-FP\*

SKB

Low-Cut Beach Socks

FEATURES:

- Lycra upper with stretchy ankle rim
- Smooth, flat-seam construction
- Comfortable and tough neoprene sole with anti-slip traction dots
- Neoprene heel and toe caps for extra protection and durability
- Wear alone, or use to prevent chafing inside of sandals or fins
- **Available sizes:** XS-3XL, \*SKB-FP: XS-2XL

SKB-10/GN



SK1

3 mm Neoprene II Low-Cut Socks

FEATURES:

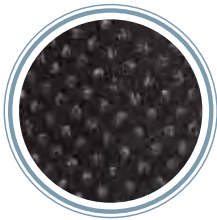
- **Available sizes:** XS - XL

SK2

3 mm Nylon II Neoprene with Anti-Slip Dots on Soles

FEATURES:

- **Available sizes:** 2XS - 2XL



SK8

4 mm Neoprene Tall Super-Stretch Sock

FEATURES:

- 4mm high cut, super-stretch Neoprene socks
- Seams are blind stitched and double glued for durability and to prevent seepage
- Perfect for use in warm to cool water, can be layered under other booties for cold water dives
- **Grip dots on the sole provide traction**
- **Rotex toe cap covering provides extra protection from rubbing on the high-wear toe area**
- **Available sizes:** S - 2XL



SIZE CHART

SIZE	US MEN'S	US WOMEN'S
XS	4 - 5	6 - 7
S	6 - 7	8 - 9
M	8 - 9	9 - 10
L	10 - 11	11 - 12
XL	12 - 13	13 - 14
XXL	14 - 15	15 - 16
XXXL	15 - 16	17 - 18



10/B



F/P\*



BK



## PG-HOOD4 / HOOD4

### Spandex Hoods

#### FEATURES:

- Lycra spandex hood offers protection from UV rays and aquatic creature stings
- Multi-panel construction ensures formfitting comfort
- Flatlock stitching eliminates seam bulk and prevents skin chafing
- **Available sizes: XS-L, \*F/P: XS-M**

PG-HDN0130



PG-HDN0151



## PG-HDN0130 (3 mm) / HDN0130 (3 mm)

## PG-HDN0151 (5 mm) / HDN0150 (5 mm)

### Hoods

#### FEATURES:

- Blind stitch and triple glued hood
- Smooth skin face seal restricts water movement
- The bib can be tucked under wetsuit collar to maintain warmth
- Double-layered top panel with vent
- **Available sizes: S-XXL**

## NC1-SET

### Neoprene Suit Repair Glue Set

#### FEATURES:

- Two 1 oz tubes
- Includes 1 transparent glue and 1 black glue



## NC1

### Neoprene Suit Repair Glue

#### FEATURES:

- 1 oz
- **Available in transparent glue or black glue**



## NCL-1

### Wetsuit Cleaner

#### FEATURES:

- 8.5 oz
- Also removes chlorine
- Designed for all neoprene products



## NCL-2

### Neoprene Cleaner and Odor Remover

#### FEATURES:

- 2 oz
- Convenient travel size, concentrated formula
- Environmentally-friendly ingredients







10B COLOR SHOWN



R COLOR SHOWN



BKGY COLOR SHOWN

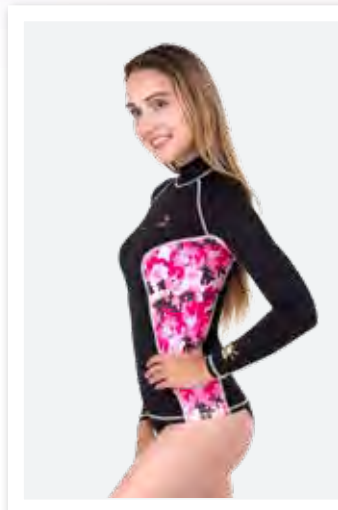


BK/Y COLOR SHOWN

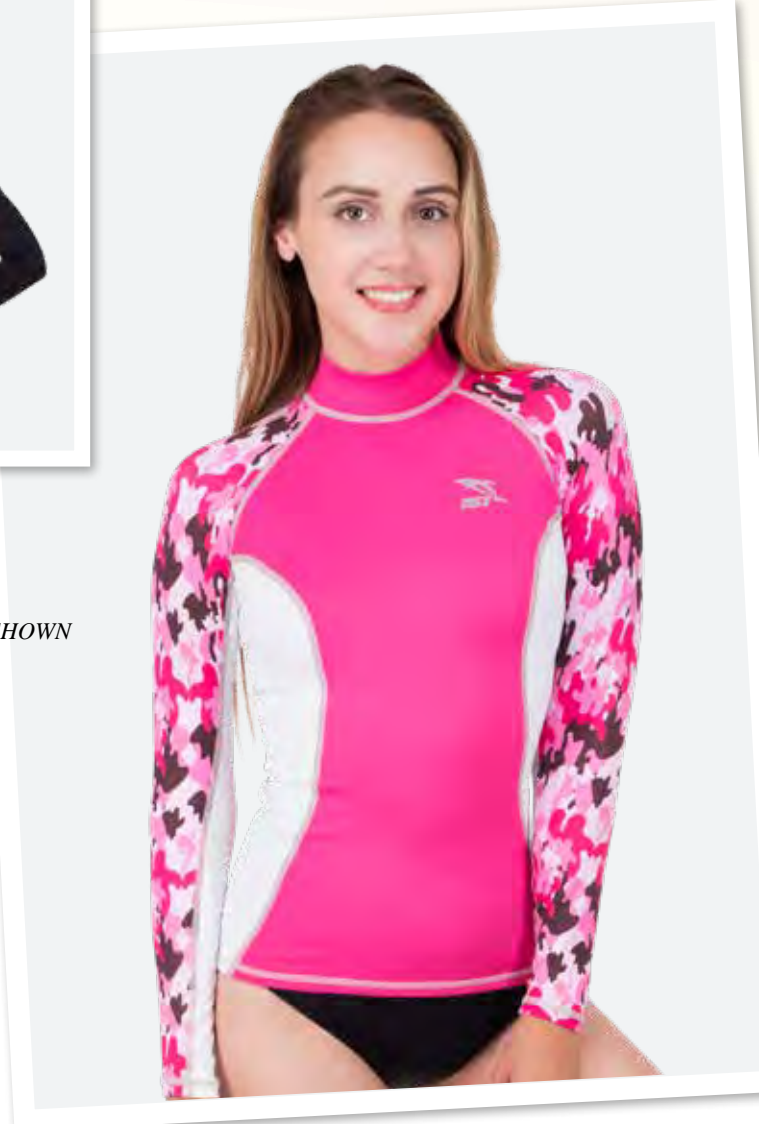


B COLOR SHOWN

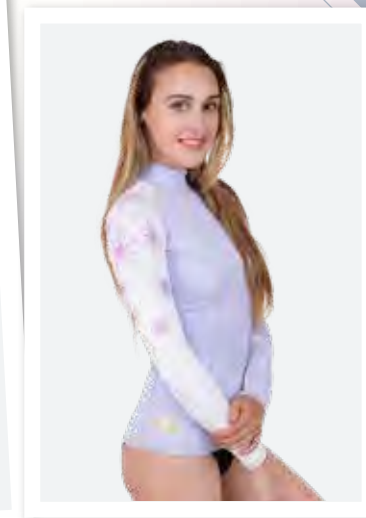
FBK COLOR SHOWN



FP COLOR SHOWN



OR COLOR SHOWN



PR COLOR SHOWN

## DS56

### Women's Long-Sleeve Spandex Rash Guard

#### FEATURES:

- Long-sleeve dive shirt/rash guard with mock turtleneck collar
- Specially constructed for a better fit on women
- Lightweight, stretchy spandex for a comfortable fit; flatlock stitching prevents chafing
- Perfect for use in warm water; can be layered under a wetsuit for cold-water dives or individuals sensitive to neoprene
- Available sizes:** XS-XL
- Available colors:** FBK, FP, OR, PR

IDEAL FOR RENTAL

## CRSL001

### Unisex Long-Sleeve Spandex Rash Guard

#### FEATURES:

- Long-sleeve dive shirt/rash guard with mock turtleneck collar
- Lightweight, stretchy spandex with flatlock stitching prevents chafing
- Constructed with inset sleeves and side panels for maximum range of motion
- Perfect for use in warm to temperate waters
- Offers protection from the sun's UV rays, jellyfish and fire coral stings
- Available sizes:** S-XXL



## PG-DS46 / DS46

### Unisex Long-Sleeve Spandex Rash Guard

#### FEATURES:

- Long-sleeve dive shirt/rash guard with mock turtleneck collar
- Lightweight, stretchy spandex for a comfortable fit; flatlock stitching prevents chafing
- Constructed with inset sleeves and side panels for maximum range of motion without binding
- Perfect for use in warm water; can be layered under a wetsuit for cold-water dives or by individuals sensitive to neoprene
- Offers protection from the sun's UV rays, jellyfish and fire coral stings
- Available sizes:** S-XXXL
- Available colors:** 10B, BKGY, B, R, BK/Y

IDEAL FOR RENTAL





HIGH NECK DESIGN

DS20-SVB

DS20-F



CONVENIENT FRONT ZIPPER DESIGN



STIRRUP HEEL STRAPS

ATTRACTIVE CAMOUFLAGE PATTERN

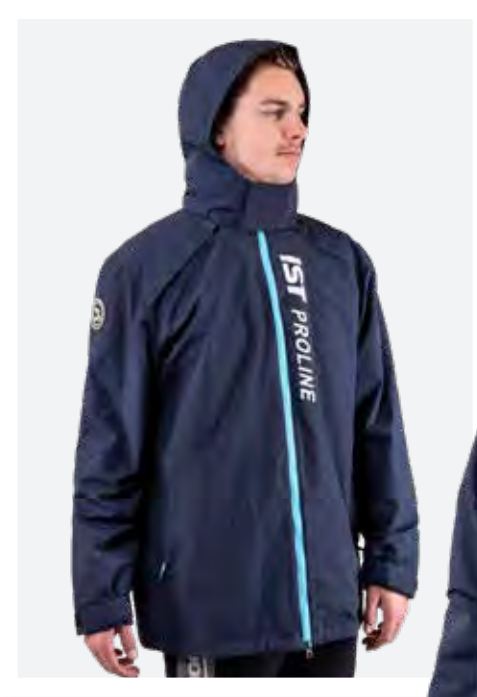


## DS20

### Full-Length Spandex Dive Skin/Rash Guard

#### FEATURES:

- Long-sleeve dive skin/rash guard with stand-up collar
- Offers protection from jellyfish and fire coral stings
- Lightweight, stretchy spandex for a comfortable fit; flatlock stitching prevents chafing
- Constructed with inset sleeves and side panels for maximum range of motion without binding
- Perfect for use in warm water; can be layered under a wetsuit for cold-water dives or by individuals sensitive to neoprene
- **Available sizes: men's S-XXL, women's 5-13**



## CV-01

### 2-in-1 Windbreaker

#### FEATURES:

- Lightweight windbreaker with attachable neoprene vest
- Excellent for in between dives on the boat
- Interior vest:
  - 2 mm high-grade neoprene with front zipper
  - Super-stretch material at waist
- Exterior coat:
  - Lightweight water-repellent fabric
- **Available sizes: men's XS-3XL**



2-in-1

## BE-204

### Divers Do It Deeper T-Shirt

Available sizes:  
men's XS-XXL



## BE-205

### I Am A Diver T-Shirt

Available sizes:  
men's XS-XXL







**MP201-BSM-BK/Y**  
Gray lenses with mirror reflection



**MP201-BSM-SV/R**  
Blue lenses with orange reflection



**MP201-BSM**

## MP-201-BSM

### PROTEUS Twin Lens Scuba Diving Snorkeling Mask

#### FEATURES:

- Designed to comfortably fit a wide range of facial profiles
- Tempered, scratch-resistant glass lenses for maximum clarity and safety
- Hypoallergenic silicone skirt resists pressure and remains comfortable at depth
- Buckles attach to skirt and will not interfere with fitting
- Mask can be folded flat for compact packing, ideal for use in a tech redundancy kit
- **Optical lenses available for in diopter from -1.0 to -8.0 in -0.5 decrements**

#### LOW PROFILE



**M100-BSM-BK**

## M100-BSM

### PANORAMA Tinted 2-Window Aluminum Dive Snorkeling Mask

#### FEATURES:

- Original IST metal mask; skirt made from hypoallergenic liquid silicone
- Adjustable mask buckles attach to the skirt for easy storage and weight reduction
- Color-correcting tinted lenses reduce glare at the surface and give a brighter, more accurate view underwater
- Comfortably fits a wide range of facial profile
- Tempered-glass twin lenses ensure clarity and safety



**M200-BSM-R**

-MORE COLORS AVAILABLE-



**M200-BSM-CB**



**M200-BSM-BK**

## M200-BSM

### SYNTHESIS 2-Window Optical Tinted Lens Aluminum Dive Mask

#### FEATURES:

- Aluminum frame with two-colored sub-frame; skirt made from hypoallergenic liquid silicone
- Adjustable mask buckles attach to the skirt for easy storage and weight reduction
- Fits a wide range of facial profiles with comfort
- Tinted, color-correcting lenses reduce glare at the surface and give a brighter, more accurate view underwater
- Tempered-glass twin lenses ensure clarity and safety; **optical lenses with diopter corrections -1.0 to -8.0 in -0.5 decrements and +1.0 to +4.0 in 0.5 increments**

## M14-BSM-06

### VEGA Twin, Tinted Low-Volume Spearfishing Mask

#### FEATURES:

- Compact mask with low internal volume for easy clearing
- Tempered, scratch-resistant glass lenses for maximum clarity and safety
- Tinted lenses reduce glare at the surface and conceal the hunter's eyes from prey
- Swiveling buckles attach to the skirt and will not interfere with fitting
- Mask can be folded flat for compact packing; ideal for use in a tech redundancy kit



#### LOW PROFILE

## M88-GS-07

### Camouflage Twin Lens Scuba Diving/ Snorkeling Mask

#### FEATURES:

- Camouflage frame and skirt break up the mask outline underwater to help conceal divers from prey
- Tempered, scratch-resistant glass lenses for maximum clarity and safety
- Hypoallergenic silicone skirt resists pressure at depth and remains comfortable on a wide range of facial profiles
- Bendable buckles attach to the skirt and will not interfere with fitting
- Mask can be folded flat for compact packing; ideal for travel or use in a tech redundancy kit



#### LOW PROFILE

## MP203-BSM

### HUNTER Twin Lens Low-Volume Diving/ Snorkeling/Spearfishing Mask

#### FEATURES:

- Matte black skirt won't reflect light, making it easier to avoid startling creatures underwater
- Tempered, scratch-resistant glass lenses for maximum clarity and safety
- Compact mask with low internal volume for easy clearing
- Swiveling buckles attach to the skirt and won't interfere with fitting
- Mask can be folded flat for compact packing; ideal for use in a tech redundancy kit



#### LOW PROFILE

## MP208

### ATUM Mask

#### FEATURES:

- Frameless twin lens mask constructed of soft, hypoallergenic liquid silicone
- Low interior volume ensures easy clearing and reduces drag in the water
- The Atum offers a broader field of vision with an ultra-low volume, giving the mask a wider field of vision
- The angle shape of the nose bridge reduces drag during descent, making the Atum streamlined and easy to use
- Matte finish



MP208-BS



MP208-W





## WSH-04

### 5 mm 2-Piece Camo Wetsuit

#### FEATURES:

- Made of high-grade 5 mm neoprene with nylon fabric
- 2-piece wetsuit with top and pants
- Beaver tail with heavy-duty POM buckles
- Blind-stitched construction
- Tough Rotex padding at chest and knees
- Smooth seal at wrists and ankles
- Available sizes: men's S-XXL



**NEW**

**ZN**  
PURIGUARD

**PURIGUARD**

## PG-WS-826 / WS-826

### 3 mm Camo Wetsuit

#### FEATURES:

- 3 mm high-grade neoprene
- Flatlock-stitch construction
- Tough Rotex material on elbow and knee pads for more protection
- 5 mm chest loading pad
- Available sizes: men's S-XXL



## S-926

### Camo Dive Gloves

#### FEATURES:

- 2 mm freediving gloves with Amara palm
- Available color: 10/BY



VSH-100-10B

VSH-100-10GN

VSH-100-09BR

VSH-100-09B

VSH-100-10/BY



## PG-VSH-100 / VSH-100

Camouflage Spearfishing Rashguard with Hood and Loading Pad

### FEATURES:

- Camouflage rashguard with hood helps conceal the underwater hunter
- 2 mm neoprene front and back panels for warmth and durability
- Rotex-covered front foam panel protects chest when loading
- Lycra sleeves, side panels and hood allow full range of motion
- Drawstring waist with locking toggle ensures a sleek fit and smooth line
- **Available in sizes S - XXL**



VSA0240-BK



VSA0240-10/BY



## VSA0240

Freediving/Apnea Weight Vest, Holds Up to 35 lbs

### FEATURES:

- 4 mm neoprene vest with eight integrated weight pockets
- Each pocket can hold up to 2 kg (4.4 lbs) in weight
- Fully-adjustable, heavy-duty, 1.5 in wide webbing straps
- Two sliding webbing keepers included
- Large quick-release buckle at the waist
- **Available sizes: M, L, XL, XXL (in Black only)**
- **Available colors: BK, 10/BY**



SIZE	M	L	XL
WAIST (in)	30 - 36	32 - 39	34 - 42





## GLA01-09

2 mm Camouflage Neoprene Spearfishing Glove with Amara Palm

FEATURES:

- Camouflage spearfishing glove helps conceal the hunter's hands underwater
- 2 mm neoprene construction for stretch and comfort
- Amara leather palm and finger surfaces for reliable grip
- Extra reinforcement on high-wear fingertip and palm surfaces
- Velcro wrist straps ensure a non-slip fit
- **Available colors: brown**
- **Available in size S-XXL**



## SKA0130-09 SKA0150-09 SKA0170-09

Nylon II Neoprene Camouflage Spearfishing Socks

FEATURES:

- Nylon II neoprene fin socks in camouflage print for spearfishing; available in 3, 5 and 7 mm
- Smooth-skin ankle seal prevents seepage
- High cut prevents ankle chafing from straps when used with open-heel fins; allows for tucking into exposure suit
- Grip dots on the sole provide traction
- Perfect for use in warm to temperate water
- **Available colors: brown**
- **Available sizes: S-XXL**



## FRA-01/C

FATHOM BLUE Carbon Fins

FEATURES:

- **Blade: 8.5 in x 24 in**
- **Overall length (size XL): 36 in**

*Incorporating all the features of Fathom Blue, these carbon blades ensure the unheard-of thrust that only composite fibers can deliver. Their interchangeable blades are extremely reactive and purpose-built for advanced freediving and spearfishing. The carbon design provides maximum propulsion in every kick and optimum return of the blade.*



## FRA01/F

Full Foot Pocket Apnea Freediving/Spearfishing Fins

FEATURES:

- Purpose-built long fins for freediving and spearfishing
- Rubber foot pocket provides a comfortable, snug fit and enhances performance with its combination of flexibility and durability
- 22° angled, flexible blade for a more efficient, powerful kick
- Open toe box for quick draining
- Sturdy, attractive carrying bag included

SIZE	S/M	M/L	L/XL
US	8 - 9	10 - 11	12 - 13
EURO	41 - 42	43 - 44	45 - 46

## F-26

BLITZ Freediving and Spearfishing Fins

FEATURES:

- Purpose-built long fins for freediving and spearfishing
- Thermo rubber foot pocket provides a comfortable, snug fit
- High density Thermo Plastic Rubber (TPR) perimeter reinforcement makes the blade strong and flexible
- Open toe box for quick drainage
- Side ribs channel water backward to maximize thrust, power and speed



SIZE	M	L	XL
US	8 - 9	10 - 11	12 - 13
EURO	42 - 43	44 - 45	46 - 47

## LB50-Q / LB100-Q

### IST Lift Bag: Dump Valve, Self-Seal, Combo Oral/BCD Inflator

With a 3-D cutting, Dolphin Tech's lift bag is stable when deployed. It has a self-sealing gas entrance which prevents accidental loss of buoyancy. An automatic dump valve located on top provides ascent speed control and prevents over-pressure damage. Two bungee loops at the top can be used to roll up the lift bag for storage purposes.

#### FEATURES:

- Durable TPU-coated, 210D Nylon bag with sturdy webbed straps, self-sealing gas chamber
- Cylindrical shape when inflated offers increased stability
- Combo oral/BCD inflator, overpressure relief valve with pulling cord
- Lift capacity: 50 lb / 100 lb
- Rolls up and secures with two bungee loops for compact storage



## SBA-1

### 33.5 In Torpedo Buoy with Flag for Spearfishing and Drift Diving

#### FEATURES:

- Torpedo shape minimizes drag in the water; included flag increases visibility
- Bottom pocket with Velcro closure for insertion of dive weights
- Multiple attachment points are provided for sign stringers, D-rings and snap hooks
- Includes 30 ft of high-visibility PE line with corrosion-resistant stainless-steel clips



## BG01

### Extra Long Freediving/Spearfishing and Scuba Gear Bag

#### FEATURES:

- Totally redesigned for maximum comfort while carrying
- Large main compartment
- Internal straps to hold fins securely
- Drainage holes promote rapid drying and prevent mildew
- Rugged 840D nylon fabric; sturdy webbed handles
- **Dimensions: 37 x 11.8 x 14.2 in**



## BG04

### Freediving Backpack

#### FEATURES:

- Constructed with heavy-duty 600D PU-coated polyester
- Foam-molded back pad and shoulder straps provide comfortable weight displacement
- This small backpack with a dimension of **13 x 14.2 x 18.5 in** yet it is still roomy enough for all of your spearfishing gear
- Extra straps to hold your fins and spearguns easily
- Two front pockets for keys, phones and wallets







## BG03

### Heavy-Duty Roller Backpack

Telescopic handle can be stowed away when not in use. Super light but durable polyester fabric makes the bag suited for traveling and it weighs only 11 lb.

#### FEATURES:

- Accommodates two sets of adult BCDs, two sets of regulators, two adult 7 mm full wetsuits, two pairs of adult booties, two pairs of military-style rubber fins and more
- Silent shock-absorbing wheels; telescopic handle; adjustable, padded shoulder straps instantly convert this roller bag to a backpack
- **Dimensions: 27.25 x 16 x 17 in with a capacity of 131 L; weighs 11 lb**



## BG-05

### Lightweight Rolling Dive Bag

#### FEATURES:

- Made of durable 600D polyester fabric
- Adjustable padded shoulder straps for secondary use
- Telescopic handle can be stowed away when not in use
- Capacity: 103 L
- Weight: 8.8 lb
- **Dimensions: 28.35 x 15.75 x 14.15 in**





## DB-10L

### 10-Liter Dry Bag

#### FEATURES:

- Lightweight, durable dry bag made from environmentally-friendly 500D TPU-coated material
- Features 1.5 in webbing strap
- **Dimensions: 8.1 x 18.5 in**



## DB-20L-B

### 20-Liter Dry Bag

#### FEATURES:

- Lightweight, durable dry bag made from environmentally-friendly 500D TPU-coated material
- Features 1.5 in webbing strap
- **Dimensions: 9.3 x 24 in**



## MGB-36

### Mesh Bag

#### FEATURES:

- Lightweight, tough 600D polyester fabric with durable nylon mesh
- Roomy, lightweight and easy to maintain
- **Dimensions: 29.5 x 11.8 x 9.4 in**

## DB20L / DB40L

### 20 L / 40 L Dry Bag with Adjustable Cross-Body Strap

#### FEATURES:

- Multipurpose dry bag with cross-body strap and double-roll top
- Constructed of sturdy, waterproof 500D PVC material with fusion-welded seams
- 20 L - cross-boday strap
- 40 L - padded shoulder strap
- **Available in either 20 L or 40 L capacity**



## MGB35

### Nylon Heavy-Duty Mesh Backpack with Adjustable Shoulder Straps

#### FEATURES:

- Heavy-duty nylon mesh quick-dry backpack for carrying wet gear
- Top drawstring closure; nylon bottom with drainage grommets
- Adjustable padded shoulder straps
- Front-gusseted Velcro-closure pocket and inner zipper pocket
- Individual enclosed water-sealed zipper compartment
- **Dimensions: 26.4 x 14.6 x 14.6 in**





## HEAVY-DUTY

## BGM02

Extra-Sturdy One-Hand Release Game Bag with Mesh Bottom

## FEATURES:

- Sturdy bag that's ideal for containing lobster, crab or other hard-to-handle live catches
- Spring-loaded handle for single-handed operation
- Bottom mesh for quick drainage and drying
- Heavy-duty 420D nylon and stainless steel handle
- Tough plastic ring on reverse for hanging from belt or hook
- **Dimensions: 27 x 16 in**



## BGM01

Large Collapsible Mesh Bag for Lake, Beach, Pool or Boat

## FEATURES:

- Quick-drying mesh construction
- Easy to clean with a freshwater rinse
- Storage pocket serves as separate front zipper compartment when not in use
- Great for use as a spare bag when traveling
- **Fully extended dimensions: Ø 16 x 32 in**
- **Folded dimensions: 2.7 x 7.9 x 7.9 in**



## HEAVY-DUTY

## BGM05

Heavy-Duty 420D Nylon Watersports and Equipment Mesh Bag

## FEATURES:

- Roomy interior holds large catch or gear
- Large heavy-duty 420D nylon stands up to wear
- Sturdy stainless steel handle with clip
- Easy to clean with a freshwater rinse
- Tough, quick-drying mesh body
- **Dimensions: 35.4 x 23.6 in**



IDEAL FOR RENTAL

## MGB-10

Large Quick-Dry Collapsible Mesh Backpack for Watersports

## FEATURES:

- Large collapsible wet gear backpack with mesh front, solid bottom and back, padded shoulder straps, side- and top-carrying handles, sleeve drawstring top closure
- Collapses into its own zippered bag for storage and travel
- Solid bottom has drainage hole to release water when carrying wet gear
- **Fully extended dimensions: 29 x 14 x 16 in**
- **Folded dimensions: 9.8 x 7.9 x 2.7 in**

IDEAL FOR RENTAL



## MGB-11

Large Collapsible Mesh Duffel Bag for Diving, Snorkeling & Travel

## FEATURES:

- Quick-drying mesh construction
- Separate front zipper compartment
- **Dimensions: Ø 16 x 32 in**

IDEAL FOR RENTAL

CHSA001

Aluminum 2-Segment Pole Spear with 3-Prong Paralyzer Tip

FEATURES:

- Annealed aluminum shaft is strong and stays rigid
- Disassembles for travel and storage
- 2-segment assembly; hollow tube with 3/4 in diamete
- Includes sturdy, attractive, compartmentalized case
- Dimensions: fully-assembled length is 6 ft 6 in; segment lengths: 2 ft 9 in + 3 ft 4 in; spearhead is 14 mm on the female side; prong length: 5 in

▪ **Note: this item is subject to a 10% excise tax**



CHSA002

Aluminum 3-Segment Pole Spear with 3-Prong Paralyzer Tipt

FEATURES:

- Annealed aluminum shaft is strong and stays rigid
- Disassembles for travel and storage
- 3-segment assembly; hollow tube with 3/4 in diameter
- Includes sturdy, attractive, compartmentalized case
- Dimensions: fully-assembled length: 6 ft 7 in; segment lengths: 20 + 25 5/8 + 27.5 in; spearhead is 14 mm on the female side; prong length: 5 in

▪ **Note: this item is subject to a 10% excise tax**



CHSA003

Aluminum Single-Segment Compact Pole Spear with 3-Prong Paralyzer Tip

FEATURES:

- Traditional style spearfishing pole; ideal for hunting lionfish
- Annealed aluminum shaft is strong and stays rigid
- Hollow tube with 3/4 in diameter
- Includes sturdy, attractive, compartmentalized case
- Dimensions: fully-assembled length: 2 ft 9 in; single-segment pole length: 28 in; spearhead is 14 mm on the female side; prong length: 5 in

▪ **Note: this item is subject to a 10% excise tax**



CHSR-01

Pole Spear Rubber Sling



CHSJ01

Universal Tip Adapter



CHSAP-3B

Aluminum Pole 3-Prong Paralyzer Tip

▪ **Note: this item is subject to a 10% excise tax**



T-60

Apollo LED Torch

FEATURES:

- Five modes: high, mid, low, SOS, off
- Magnetic power switch
- Lightweight 6061-T6 aluminum material
- Light diffuser attachable
- Patented built-in sliding light diffuser
- Battery is not included



TECH SPECIFICATIONS	
BULB TYPE	CREE XM-L2 U3 (1)
BRIGHTNESS	1200 lm
BURN TIME	2-10 hours
MAXIMUM DEPTH	328 ft
WEIGHT (DRY)	116 g / 0.26 lb (without battery)
BUOYANCY	Negative
BATTERY TYPES	18650 rechargeable Li-ion (1) OR CR123A primary lithium batteries (2)

T101

Heavy-Duty Rechargeable Lantern Style Compact LED Dive Torch

FEATURES:

- Rechargeable LED dive torch in a rugged, anodized aluminum casing with lantern-style handle
- Switch lock prevents accidental activation to preserve battery life
- Double O-ring seal, waterproof to a depth of 328 ft
- Unscrew the main body to reveal interior charging port (charging cable included)
- Great for use as rental equipment



TECH SPECIFICATIONS	
BULB TYPE	3 High-Power LEDs
LED LIFE	+10,000 hrs
COLOR TEMP.	5500 K
BRIGHTNESS	660 lm
BURN TIME	3+ hrs
CHARGING TIME	Approx. 10 - 12 hrs
MAX. DEPTH	328 ft
WEIGHT	1.8 lb
BUOYANCY	Negative
BATTERY TYPE	Rechargeable lithium-ion, 4.2 V × 10400 mAH
BATTERY LIFE	Up to 300 recharging cycles

T16

High-Powered LED 3 W Dive Torch

FEATURES:

- 220 lm dive torch with approximate 8 hr burn time
- Rated waterproof to a depth of 197 ft
- Switch lock prevents accidental activation
- Includes toggle-lock leash with cushioned wrist sleeve
- Battery is not included
- **Dimensions: 6.2 x 2.4 x 2 in**
- **Available colors: BK, O**



TECH SPECIFICATIONS	
LED LIFE	+10,000 hours
COLOR TEMP.	5500 K
BRIGHTNESS	220 lm
BURN TIME	Approx. 8 hrs
MAX. DEPTH	197 ft
WEIGHT	0.36 lbs without battery
BUOYANCY	Positive
BATTERY TYPE	3 C-Size batteries





## T1000

**ORION1000+ Premium Color Correcting, Multi-Mode LED Dive Torch**

### FEATURES:

- 700 lm, Color Rendering Index (CRI) of 80 and 3500K light color temperature reveal true colors at depth
- 5 operation modes, including SOS and Flash
- Waterproof to depth of 330 ft
- Single pushbutton control with multicolor battery indicator light ring
- 100 min burn time at 100% power on a full charge
- Battery is not included



## LS3

**Dive Strobe**

### FEATURES:

- Handy strobe with back up LED torch
- The strobe's flash is highly visible, even over long distances
- Operates on three AA batteries
- Maximum 24 hours of continuous strobe signaling
- Waterproof to depth of 130 ft
- Battery is not included

## LS12

**Dive Beacon**

### FEATURES:

- **Available colors: B, R, GN, Y**
- Comes with lanyard and batteries



### LS12 TECH SPECIFICATIONS

BATT. TYPE	3 x G13A
WEIGHT	0.04 lbs (dry)
BURN TIME	72 hrs
DIMENSIONS	1.77 x 0.87 in

## T-50

**Dive Strobe**

### FEATURES:

- One-piece main torch body design
- Two O-rings provide a sealed construction
- Three modes of operation
- Battery is not included
- **Available colors: MK, R**



### T-50 TECH SPECIFICATIONS

BULB TYPE	CREE XM-L2 U2 LED
LED LIFE	50,000 hrs
MAX. OUTPUT	800 lm
BURN TIME	2-8 hrs
MAX. DEPTH	328 ft
WEIGHT	120 g (0.27 lb) without battery
BYOYANCY	Negative
BATTERY TYPE	2 x CR123A primary lithium batteries or 1 x 18650 rechargeable lithium-ion battery
Beam Angle	15 degrees
Dimensions	5.24 x 1.14 in
Mode Selections	high, low, SOS



## K25

**Knife Scissors**

### FEATURES:

- 420-grade stainless steel with pointed-tip blade
- Rubber knife straps included
- Easy one-hand operation
- **Dimensions: 11 in**



## K40

**Folding Knife**

### FEATURES:

- Foldable 420-grade stainless steel BC knife
- Includes lanyard
- **Dimensions:**
  - **Extended: 28.25 in**
  - **Folded: 4.7 in**





## K02

### Stainless Steel Dual-Edge Dive Knife with Quick-Release Case

#### FEATURES:

- Value-priced dive knife with high-end knife features
- Hard 420-grade stainless steel blade stands up to repeated sharpening
- Full tong design for strength and durability
- Includes smooth edge, serrated edge and cutting notch
- Case with quick-release tab for one-handed operation and rubber knife straps included
- **Overall length: 10 3/4 in**
- **Blade length: 5 3/4 in**
- **Available colors: CB, MK**



## K10

### Dual-Edge Pointed-Tip Dive Knife with One-Hand Quick-Release Case

#### FEATURES:

- Pointed-tip dive knife, dual-edge blade constructed of hard 420-grade stainless steel
- Includes smooth edge, serrated edge and cutting notch
- Sharp, curved tip for getting into and under stubborn entanglements
- Contoured handle with thumb guard
- Case with quick-release tab for one-handed operation and rubber knife straps included
- **Overall length: 9 1/4 in**
- **Blade length: 4 1/4 in**
- **Available colors: BK, C, B**



## K30

### Titanium BC Knife

#### FEATURES:

- Compact dive knife, dual-edge blade constructed of high-grade #6-4 titanium
- Offers a smooth edge, serrated edge and cutting notch
- Pointed tip for prying or loosening tightly wound entanglements
- Contoured handle with recessed center for grip
- Includes durable nylon sheath; can be mounted upside down on BCD shoulder strap or stored in BCD pockets
- **Overall length: 5 3/4 in**
- **Blade length: 2 3/4 in**
- **Available colors: B, BK, GN**

## K21

### Dual-Edge Spearfishing Knife with One-Hand Quick-Release Case

#### FEATURES:

- Needle point knife constructed of hard 420-grade stainless steel
- Includes full-length smooth edge, serrated section and cutting notch
- Sharp tip for quickly dispatching speared fish or game
- Contoured handle with thumb guard
- Case with quick-release tab for one-handed operation and rubber knife straps included
- **Overall length: 8 3/4 in**
- **Blade length: 4 1/4 in**



## K28

### Technical Diving Knife

#### FEATURES:

- Compact dive knife, dual-edge blade constructed of hard 420-grade stainless steel
- Includes smooth edge, serrated edge and cutting notch
- Includes durable nylon sheath
- **Overall length: 6 in**
- **Blade Length : 2 3/4 in**



## KB01 (PAIR)

### 17.7 In Rubber Knife Strap



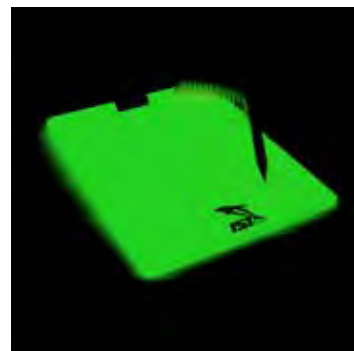


## WR-1/F

### Glow-in-the-Dark Underwater Writing Slate

#### FEATURES:

- Comes with a clip for convenient carrying
- Equipped with quick-release buckle
- Charcoal pencil prevents corrosion
- **Dimensions: 5 x 6 in**



## WR-3/F

### Glow-in-the-Dark, Multi-Sided Underwater Writing Slate

#### FEATURES:

- Unique slate with elastic hinge allows extra writing space without losing compactness
- Attach to forearm for streamlining
- Charcoal pencil prevents corrosion
- **Dimensions: 4.1 x 4.7 in**



## WR-7

### Underwater Writing Slate

#### FEATURES:

- Quick-release buckle and clip
- **Dimensions: 11 x 8 in**



## WR1

### Underwater Writing Slate

#### FEATURES:

- Hook-on clip for attachment to belt or BC
- Quick-release buckle for fast retrieval
- **Dimensions: 5 x 6 in**



## WR4

### Retractable Lanyard Underwater Slate with Glow-in-the-Dark Compass

#### FEATURES:

- White waterproof slate with mounted glow-in-the-dark compass
- Retractable lanyard offers quick access, automatically stows the slate when not in use
- **Dimensions: 2.8 x 8 in**



## WR5-REFILL

### Underwater Notebook Refill

#### FEATURES:

- 25-page refill for IST WR-5 Dolphin Tech Refillable Underwater Notebook
- **Dimensions when open: 7 x 8 in**
- **Dimensions when closed: 7 x 4 in**



## WR3

### Multi-Sided Underwater Slate

#### FEATURES:

- Multi-sided, three-layer waterproof slate with elastic hinge bands for holding selected layer open or keeping closed when not in use
- Velcro strap for secure attachment to arm; four replacement elastic bands and replacement pencil included
- **Dimensions: 4.1 x 4.7 in**



## WR5

### Dolphin Tech Refillable Underwater Notebook

#### FEATURES:

- Underwater notebook with 25 reusable waterproof pages; refills available
- Durable 2250D PU-coated woven ballistic nylon cover
- Clear window pockets on the inner and outer back cover
- **Dimensions when open: 8 x 10 in**
- **Dimensions when closed: 8 x 5 in**



## WR6

### Underwater Slate with Locking Retractor and Ruler

#### FEATURES:

- Underwater slate with locking retractable line
- 6 in ruler stamped along one edge
- **Dimensions: 7 x 5 in**
- **Stainless steel wire length: 18.7 in**



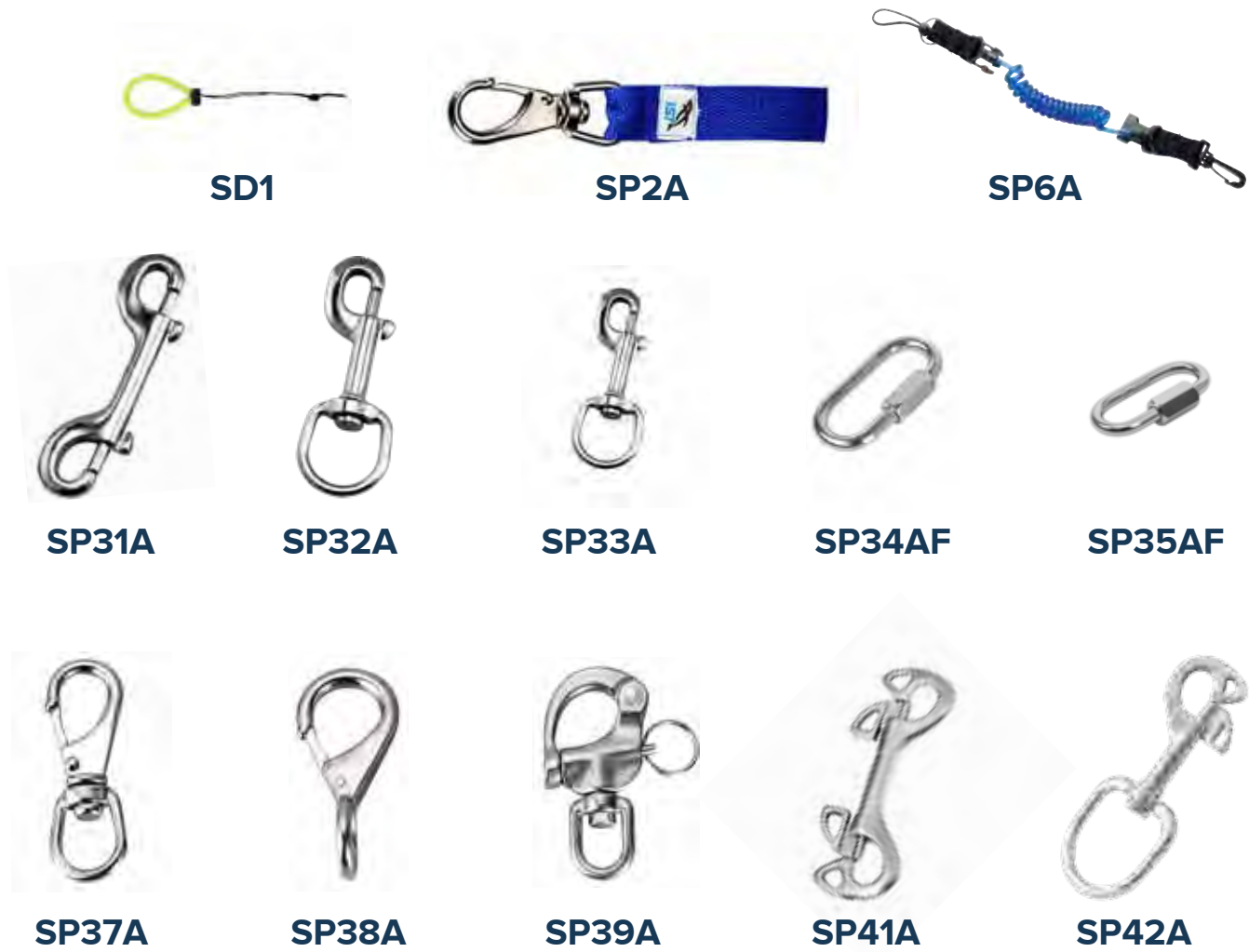


ITEM NUMBER	DESCRIPTION	COLOR
DB02	Dry Box Size: 9 x 6.3 x 4.3 in	BK, NY
DB6	Dry Canister Size: 2.8 × 7 in	BK, B, NY, R
DB7	Small Dry Canister Size: 2.5 × 6.3 in	BK, B, NY, R
DB8	Mini Personal Dry Bag: 5.2 x 7.2 in	N/A
DB9	Mini Personal Dry Bag: 6 x 10 in	N/A
KC01-A	Tank-Shaped Key Ring	SV, B, G
KC12	Shark Keychain Bottle Opener	BK, B, GN
TAG	Luggage Name Tag	N/A
TA5	Compact Stainless Steel Underwater Shaker	N/A
TA6	Compact Stainless Steel Underwater Shaker with Measure Rod	N/A
WH04	Split-Fin-Shaped Whistle	B, BK, O, NY
TA	Tank Banger	N/A
TA7	Aluminum Pointer with Ruler and Lanyard	N/A



ITEM NUMBER	DESCRIPTION	COLOR
RB1	Quick-Release Belt	BK
WB10	60 x 2 in Weight Belt with Plastic Buckle	BK, B, NY
WB12	60 x 2 in Weight Belt with BB-3 Stainless Steel Buckle	BK
BB	Plastic Belt Buckle	BK, B, NY, P, R
BB3	304 Stainless Steel Cam Belt Buckle	N/A
WK	Webbing Keeper	BK, B, NY, P, R
WK02	D-Ring Webbing Keeper	N/A
WK03	Stainless Webbing Keeper	N/A





ITEM NUMBER	DESCRIPTION	COLOR
SD1	Soft-Tube Lanyard with Tube Sleeve and Stopper	BK, NY
SP2A	Small Stainless Steel 316 Swivel Clip with 1 In Webbing	N/A
SP6A	Coil Lanyard with Quick-Release Buckle	N/A
SP31A	4 in Stainless Steel Double-End Clip	N/A
SP32A	4 in Big Stainless Steel Clip	N/A
SP33A	2.8 in Stainless Steel Small Clip	N/A
SP34AF	2 in Stainless Steel Quick Link	N/A
SP35AF	1.6 in Stainless Steel Quick Link: 4 mm Wire Thickness	N/A
SP37A	3.3 in 316 Grade Stainless Steel Clip	N/A
SP38A	3.3 in 316 Grade Stainless Steel Clip	N/A
SP39A	3.4 in 316 Grade Stainless Steel Clip	N/A
SP41A	4.25 in 316 Grade Stainless Steel Clip	N/A
SP42A	4.3 in Stainless Steel Clip	N/A

REPLICA HELMETS

Gleaming replicas, authentically and beautifully burnished to scale perfection. Ideal for home, office or restaurant motifs. Unique attention-getters for diving aficionados.



A101



A107

DIVE FLAGS



DF01/S



DF02/S



DF03/S



DF04/S

ITEM NUMBER	DESCRIPTION
A101	5.5 in Dive Helmet Replica with Quartz Clock
A107	12 in Dive Helmet Replica
DF01/S	“Diver Down” Flag with Stiffener: 20 x 24 in
DF02/S	Nylon “Diver Down” Flag with Metal Stiffener Grommets: 14 x 18 in
DF03/S	Alpha Flag: 20 × 24 in
DF04/S	Alpha Flag: 14 × 18 in

## CPR

### CPR Pocket Resuscitator Mask

#### FEATURES:

- Allows mouth-to-mouth resuscitation without physical contact
- Made from hypoallergenic silicone
- Separate oxygen tube inlet
- Includes protective case



## H3

### Wetsuit Hanger

#### FEATURES:

- Flexible arms can be shaped for suit hanging
- Padded contact surface to prevent creasing or marking while hanging
- Hook can be disassembled to save storage space



## H6

### Diving Equipment Hanger

A versatile hanger that can be used to hang equipment such as a BCD, regulator, gloves or boots.



## H7

### 2-In-1 Drying Hanger

#### FEATURES:

- 2-in-1 hanger for post-dive drysuit and regulator drying
- Lightweight structure yet ultra-strong.
- Built-in dummy cylinder valve for easy regulator attachment (DIN/yoke compatible)
- Can be disassembled to save storage space



## CAP7

### IST Baseball Cap



## LJ-400

### Youth Life Vest

#### FEATURES:

- Made of high-grade 2 mm neoprene
- Filled with high-grade environmentally-friendly foam
- Crotch strap for safety
- Available sizes: S-L

## LJ-200

### Junior Snorkeling Vest

#### FEATURES:

- 210D nylon with TPU coating
- Low-resistance oral inflator
- Rapid release valve
- Buoyancy: 53.4 N (5.4 kgf/12lbf)
- CE approved





IDEAL FOR RENTAL

CS01-BS-LY

# CSJ01

Snorkeling Combo Set for Kids

FEATURES:

- Semi-dry-top snorkel with one bottom purge and full-flex section
- Dual-window mask with tempered glass, teardrop lenses for a wide field of view
- Ergonomically-designed snorkel holder with quick-release tab
- Hypoallergenic, soft silicone mouthpiece with bite tabs for a firm, comfortable grip
- Quick-dry mesh bag for storage and transport

-MORE COLORS AVAILABLE-

Mesh Bag Included

CSJ01-BS-GN

CSJ01-BS-V

CSJ01-BS-P

CSJ01-BS-O

CSJ01-LY

CSJ01-GN

CSJ01-PR

CSJ01-P

CSJ01-O

CSJ01-CB

CSJ01-W

# CF710809

Kids' Snorkeling Set: M71 Mask, SNK08 Snorkel, FK09 Fins & Bag

FEATURES:

- Set includes M71 Lyra mask, SNK08 snorkel with splash guard, FK09 fins and quick-dry mesh bag
- Lyra mask offers a large single tempered-glass lens, quick-release swiveling buckles, silicone skirt and adjustable strap
- SNK08 semi-dry snorkel
- FK09 Adjustable Swift Kids' Open-Heel Fins reduce fatigue
- Quick-dry mesh bag for storage and transport
- Available colors: B, BK, NY

CF710809-NY

CF710809-BK

# CCSJ101101

Kids' Single-Lens Mask & Semi-Dry-Top Snorkel Set

FEATURES:

- Semi-dry snorkel with top splash guard, flexible silicone skirt and impact-resistant plastic frame
- Large single-window tempered-glass lens for maximum clarity and safety
- One-way purge valve makes clearing water fast and simple
- Soft hypoallergenic silicone mouthpiece with bite tabs, sized for kids
- Quick-release side buckles and wide strap
- Available colors: B, P



# FK9

Swift Adjustable Kids' Open-Heel Fins for Diving and Snorkeling

FEATURES:

- Open-heel fins sized and styled for kids
- Adjustable heel strap to accommodate growing feet
- Lightweight materials and vented design reduce fatigue
- Open toe box for quick draining
- Highly visible color options make the fins easy to find and harder to lose
- Available colors: BK, B, Y

# F12

Sea Diver Classic Rubber Closed Heel Fins for Kids

FEATURES:

- Durable and comfortable rubber fins
- Flexible, powerful and easy to maneuver
- Open toe box for quick drainage
- Classic design with upright ribs to channel water
- Sturdy yet affordable entry-level fin
- Available sizes: XXXXS - XXS

SIZE	XXXXXS	XXXS	XXS
U.S.	10 - 13	12 - 1	1 - 3



IDEAL FOR RENTAL





MJ-111-W/T

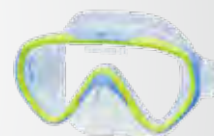
-MORE COLORS AVAILABLE-



MJ-111-BS-O



MJ-111-HP



MJ-111-PB/NY

-MORE COLORS AVAILABLE-



M71-W/PB



M71-W/P



M71-NY



M71-BK



M71-B

## MJ-111

### UNO Kids' Single-Window Diving/Snorkeling Mask

#### FEATURES:

- Generous single lens in a mask sized for kids
- Durable, high-impact plastic frame with color accents
- Tempered-glass, scratch-resistant lens for clarity and safety
- Skirt and adjustable strap in hypoallergenic silicone for a comfortable fit and reliable seal
- Swiveling quick-release buckles make the mask easy for kids to adjust, put on and take off

## M71

### Lyra Kids' Single-Window Diving/Snorkeling Mask

#### FEATURES:

- Single-lens mask in a classic shape sized for kids
- Durable, high-impact plastic frame with quick-release, swiveling buckles
- Tempered-glass, scratch-resistant lens for clarity and safety
- Silicone skirt and adjustable strap for comfortable fit and reliable seal

## M59K

### Twingo Youth Dual-Window Snorkeling Mask

#### FEATURES:

- Shatterproof, tempered-glass lenses for safety, clarity and durability
- Impact-resistant plastic frame with quick-lift strap and adjustable buckles
- Soft, hypoallergenic silicone skirt and a wide split strap for a snug, comfortable fit



M59K-P



M59K-B



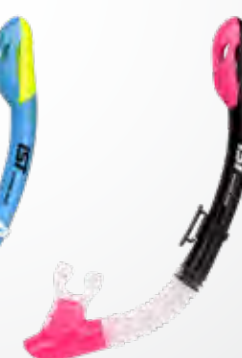
M59K-BSBK



SNK205-BS-O



SNK205-PB/NY



SNK205-HP



SNK205-W/T

## SNK205

### Kids' Dry-Top Snorkel

#### FEATURES:

- Dry-top snorkel specially sized for kids and juniors
- Wide bore air tube with full-flex bottom section
- Top baffle deflects water at the surface; float valve closes the snorkel tube when submerged
- Comfort mouthpiece with bite tabs in soft, flexible, hypoallergenic silicone
- One-way purge valve and generous purge reservoir
- Snorkel holder with quick-release tab included

## SNK8

### Junior Snorkel with Splash Guard and Purge

#### FEATURES:

- Entry-level snorkel with water elimination features to reassure nervous kids
- Top splash guard deflects water above the surface
- Bottom purge valve for quick, simple water clearing underwater
- Hypoallergenic silicone mouthpiece with kid-size bite tabs reduces jaw fatigue
- Snorkel keeper slips onto mask strap for a secure hold



SNK8-CB



SNK8-CP



SNK8-NY



SNK8-W



SNK8-BK



SK1J

3 mm Nylon II Neoprene Low-Cut Kids Dive Socks

- FEATURES:
- 3 mm nylon II neoprene fin socks for use alone or in fins
  - Helps keep feet warm and prevent chafing
  - Seams are blind-stitched and glued for durability and to prevent seepage
  - Perfect for use in warm water
  - **Available sizes: S-XL**

SIZE	S	M	L	XL
U.S.	11 - 1	1 - 3	3 - 5	5 - 7



S19

5 mm Nylon II Tall Diving Booties with Vulcanized Rubber Sole

- FEATURES:
- 5 mm nylon II high-top dive and watersport boots
  - Vulcanized rubber sole with additional heel cap for protection and durability
  - Fin strap cleat holds fin straps securely in place
  - Blind-stitched upper seams, heavy-duty #10 YKK zipper
  - Durable, lightweight boot is ideal for rental usage
  - Ultra-durable #10 YKK zipper with inner gusset to prevent seepage
  - **Available sizes: 1-3**



S38J

Kids' 3 mm Low-Cut Sturdy Warm-Water Booties with Vulcanized Rubber Sole

- FEATURES:
- Versatile 3 mm neoprene low-cut bootie with stretchy ankle cuff
  - Blind-stitched, glued seams add durability and minimize water flushing
  - Vulcanized rubber sole protects feet from rough or hot surfaces while providing traction
  - Lightweight and durable
  - Machine washable
  - **Available sizes: 1, 2, 3**



DSK48-T

DSK48-ML

WP48-T

WP48-PR



WP48-BW

WP-48

Kids' Spandex Shorts

- FEATURES:
- Spandex water shorts for kids in fun colors and patterns
  - Lightweight, stretchy spandex with multi-panel construction for a comfortable fit
  - Flatlock stitching prevents chafing
  - Offers 50+ protection from the sun's UV rays, jellyfish and fire coral stings
  - **Available colors: BW, T, PR**

SIZES	XXS	XS	S	M	L
HEIGHT	3'3"	3'6"	3'11"	4'3"	4'7"
CHEST	2'	2'1"	2'2"	2'4"	2'6"
HIP	16"	18"	21"	22"	23"

DSK46

Unisex Kids' Long-Sleeve Spandex Rash Guard

- FEATURES:
- Long-sleeve dive shirt/rash guard for kids with mock turtleneck collar
  - Lightweight, stretchy spandex for a comfortable fit; flatlock stitching prevents chafing
  - Constructed with inset sleeves and side panels for maximum range of motion without binding
  - Perfect for use in warm to temperate water; can be layered under a wetsuit for cold-water conditions or by kids sensitive to neoprene
  - Offers protection from the sun's UV rays, jellyfish and fire coral stings
  - **Available colors: B, P**
  - **Available sizes: S-XL**



DSK48

Kids' Spandex Rash Guard

- FEATURES:
- Spandex long-sleeve dive shirt/rash guard for kids in fun colors and patterns
  - Lightweight, stretchy spandex with inset sleeves and a great, comfortable fit
  - Flatlock stitching prevents chafing
  - Offer UV protection 50+ from the sun's UV ray, jellyfish and fire coral stings.
  - **Available sizes: XXS-L**
  - **Available colors: T, ML**



## PG-WSK03 / WSK03

3 mm Shorty with Super Stretch Panels and Front Zip

### FEATURES:

- 3 mm nylon II neoprene with super-stretch panels at armpit and crotch for maximum stretch and flexibility
- Multi-panel construction for a snug fit
- Flatlock stitching throughout to reduce seam irritation
- Smooth seals at the arms, legs and neck prevent excess water from entering the suit
- Front zipper for easy donning and doffing
- Available sizes: XXS - XL**

PG-WSK03-HP



PG-WSK03-B



PG-WSK03-NY



## PG-WSK80 / WSK80

3 mm Full-Length Wetsuit with Super-Stretch Panels

PG-WSK80-B



### FEATURES:

- 3 mm nylon II neoprene with super-stretch panels at armpits, crotch and back of knees for maximum stretch and flexibility
- Multi-panel construction for a snug fit and flatlock stitching throughout to reduce seam irritation
- Zipper at wrists and ankles prevent flushing
- Kneepads prevent scuffs and rips
- Front zipper for easy donning and doffing
- Available sizes: XXS - XL**

PG-WSK80-HP



PG-WSK80-NY



### YOUTH DIVE SUIT SIZE CHART

SIZES	XXS	XS	S	M	L	XL
HEIGHT	3'3"	3'6"	3'11"	4'3"	4'7"	5'
CHEST	24"	25"	26"	28"	30"	31"
HIP	25"	25.5"	27"	28.5"	30.5"	32.5"

## WSK02

3 mm Shorty with Extra Stretch Panels and Flatlock Stitching

### FEATURES:

- 3 mm nylon II neoprene with large, fine-mesh panels at the front and back for maximum stretch and flexibility
- Flatlock stitching throughout reduces seam irritation
- Smooth seals at the arms, legs and neck prevent excess water from entering the suit
- Back zipper with easy-reach leash makes it easy to put on and take off
- Fun and colorful; makes a great first wetsuit for kids
- Available sizes: S - XL**



## WSK70

3 mm Kids' Jumpsuit with Super-Stretch Panels in Key Areas

### FEATURES:

- Soft 3 mm nylon II neoprene is used throughout; flatlock-stitched to eliminate seam irritation
- Flexible kneepads add extra durability without hindering movement
- Doubles as an insulation layer under snowsuits for winter sports
- Large #10 YKK back zipper with leash makes donning and doffing easy
- Extra ankle and wrist zippers improve fit and minimize flushing
- Available sizes: S - XL**



WSK70-B



WSK70-NY

## CWSKJ0130

3 mm Kids' Jumpsuit with Lycra Side Panels

### FEATURES:

- Soft 3 mm nylon II neoprene is used throughout; flatlock stitching eliminates seam irritation
- Lycra side and arm panels maximize range of motion
- Flexible kneepads add durability without hindering movement
- Doubles as an insulation layer under snowsuits for winter sports
- Back zipper with easy-reach leash makes donning and doffing easy
- Smooth seals at the ankles, wrists and neck prevent flushing
- Available sizes: S - XL**



CWSKJ0130-P



CWSKJ0130-PB

### YOUTH DIVE SUIT SIZE CHART

SIZES	S	M	L	XL
HEIGHT	3'11"	4'3"	4'7"	5'
CHEST	26"	28"	30"	31"
HIP	27"	29"	31"	33"



SC6  
Spandex Swimming Cap

- FEATURES:
- Made of high-grade spandex material
  - Colors: BK, B



SC7  
Swimming Cap

- FEATURES:
- Made of silicone-coated fabric with spandex interior
  - Colors: HP, B



CSC101  
Silicone Swimming Cap



CSC204  
Silicone Swimming Cap

ITEM NUMBER	DESCRIPTION	COLORS
SC6	Spandex Swimming Cap	B, BK
SC7	Swimming Cap	HP, B
CSC101	Silicone Swimming Cap	B, BK
CSC204	Silicone Swimming Cap	BK, GY, Y



G36



G39



GJ01

ITEM NUMBER	DESCRIPTION	COLORS
G36	Large-Frame Swimming Goggle	CB, C
G39	Mirror-Lens Swimming Goggle	BK, C, CB
GJ01	Silicone Jr. Swimming Goggle	B, BK, P

G40  
Optical Swimming Goggle

- FEATURES:
- Impact-resistant lens design
  - Polycarbonate resin construction
  - Lenses feature UV protection
  - Left and right lenses are interchangeable
  - Available diopter from -1.0 to -10.0 and +1.0 to +8.0
  - Longlasting anti-fog system prevents fogging under all conditions



ITEM NUMBER	DESCRIPTION
G40 SET	Adult Swimming Goggles
G40 OP	Goggle Lens (Per Piece)
G40-SS (PER-SET)	Strap & Buckle Set for G40
L34	Goggles Box

NEW

SS-01

Anti-Jellyfish Sunscreen

IST research and develop the Mineral Sunscreen Lotion contains no artificial chemical ingredient. Contains Reef friendly formula without Octinoxate & Oxybenzone. The Anti-Jellyfish protection suits for all kinds of water sports activities.

- FEATURES:
- Mineral Sunscreen lotion in SPF30
  - Anti-Jellyfish formula
  - Reef Friedly with natural ingredient
  - Extracting from Laminaria Ochroleuca, Tocopheryl acetate, squalane and several elements brings moisturize and protection of skin.
  - Fragrance Free for all skin types, provides protection from head to toe.



NEW

HPSW1

High Pressure Hose Swivel Spool  
Shouldered air spool



NEW

HPSW2

High Pressure Hose Swivel Spool  
Standard air spool



NEW

HPSW3

High Pressure Hose Swivel Spool  
Long air spool



IF-O  
Inflator Octopus

IST's newest released high-performance second stage regulator combined with power inflator. IF-O is set in front of you, unlike a traditional octopus, and can be reached at any time when emergency.

- FEATURES:**
- Coupled with our high-spec, large bore intermediate pressure hose. Max. service pressure @ 34.5bar (500psi).
  - Ultra soft front cover allows you to reach the purge button easily.
  - Cracking pressure setting @ 1.4-1.6 inch of water.
  - Max. service intermediate pressure @ 10bar (145psi).
  - Designed to fit 3/4" rubber inflator corrugated hose.



IFO-38A  
Adaptor

Adaptor for 1ST I F-O inflator octopus with 1" corrugate hose.



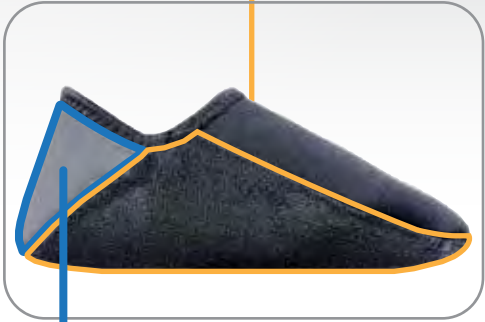
SK-9  
3mm Freediving boat socks

- FEATURES:**
- 3mm ultra high-grade neoprene lined with smooth skin outside.
  - Design to be worn with freediving fins to make you to fit the foot pocket more to reduce unnecessary effort to be put in kicking.
  - Blind-stitching technology sealed with rubber glue to block the water outside.
  - Boat socks design to make your legs look longer with elegance lines.
  - Anti-slip dots at soles.



Sizes	XS	S	M	L	XL
US	4-6	6-8	8-10	10-12	13
EUR	34-38	38-41	41-44	44-47	48
CM	22-24	24-26	26-28	28-30	31

Towel Fabric  
(Excellent comfort & keeps warm)



Inside the sock

Open cell  
(Prevent the sock from falling off )





## FD-BUOY

### Freediving Buoy

#### FEATURES:

- 15" inner diameter Freediving Buoy made from heavy duty 600D PU coated polyester fabric for outer shell; ultra high-grade rubber for inner tire
- 6 handles located around the buoy allows several divers to use at the same time
- 2 stainless steel D-ring at sides of the buoy for connecting with other buoys if necessary
- 2 YKK #10 zips at front cover for easy operation and also prevent stuffs from falling out
- 4 stainless steel grommets at bottom to drain water
- 2 stainless steel D-rings are fixed at bottom with extra durable 2" polyester webbing for divers to connect weight and rope; max. dry weight loading 300KG (660lb)
- Comes with a tire inflation adapter can be connected to a BC hose



2 shoulder straps designed for easier carrying



Comfortable hand grip



D-ring for rope storage

## FD-R/50M

### Freediving Static Rope in 50 Meters (164 ft)

#### FEATURES:

- 10mm in rope diameter / 50 meters (164 ft) in total length
- Static elongation of the rope <5%
- Neon color designed for better visibility underwater
- The rope holds up to 1800Kgs (3,968lbs)



## FD-IT/15

### Inner Tire

#### FEATURES:

- High quality natural rubber compounded with special formula makes the tire more durable than other rubber products
- Comes with US standard TR-15 valve, can be inflated with bicycle inflator or IST N-8
- Dimension: Inner Diameter: 390mm (15.35")

Otter Diameter: 750mm (29.53")



## N-8

### Tire Inflator

#### FEATURES:

- Copper chrome plating covered by aluminum alloy
- QD connector design for BC hose
- With this inflator, FD-IT/15 inner tire can be fully inflated in 15 seconds





Can be carried as shoulder bag

Opened: 105cm x 125cm (41.3" x 49.2")  
Folded: 105cm x 25.5cm x 7cm (41.3" x 10" x 2.8")



Dress up place



Equipment storage



Hanging wetsuit function

## BG-06

### Freediving Equipment Bag

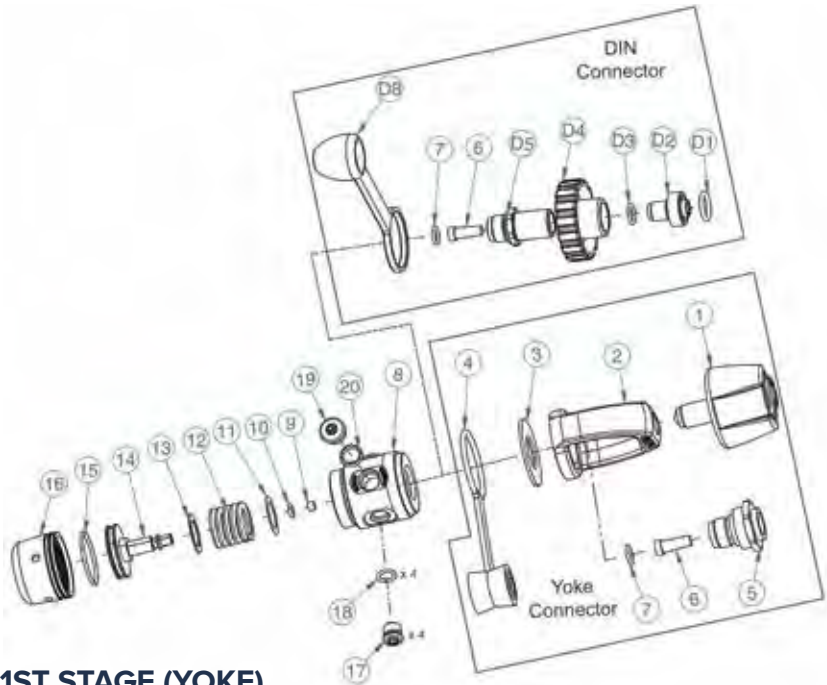
Designed to carry freediving fins and wetsuits.  
Ultra light-weight and durability.

**FEATURES:**

- Made with heavy duty 600D PU coated polyester fabric
- Foldable design to minimize the space and for easier storage
- Can be hung with wetsuit hanger along with the suit and the bag itself
- More space for equipment storage



## R7 1ST STAGE PARTS DIAGRAM



### R7 CLASSIC DOWNSTREAM PISTON 1ST STAGE (YOKE)

No.	Part Number	Description	Yoke	DIN
1	YK-01	Yoke Knob		
2	MR7-02	Yoke		
3	MR7-03	Styling Cup		
4	MR7-04	Dust Cap		
5	MR7-05	Gas Inlet / Yoke Retaining Nut		
6	MR7-06	Cone Mesh Filter	*	
7	MR7-07	NBR O-ring (AS568-011 N90)	*	
8	MR7-08	Main Housing		
9	MR7-09	High-Pressure Seat	*	*
10	MR7-10	NBR O-ring (AS568-008 N70)	*	*
11	MR7-11	Pressure Adjustment Shim - Thin	*	*
12	MR7-12	Main Spring		
13	MR7-13	Pressure Adjustment Shim - Thick	*(x2)	*(x2)
14	MR7-14	Piston		
15	MR7-15	NBR O-ring (AS568-023 N70)	*	*
16	MR7-16	Ambient Pressure Chamber		
17	MR7-17	LP Port Plug		
18	MR7-18	LP Port Plug O-Ring (AS568-011 N70)	*(x4)	*(x4)
19	MR7-19	HP Port Plug		
20	MR7-20	HP Port Plug O-Ring (AS568-012 N90)	*(x2)	

### R7 1ST STAGE (DIN) - LESS YOKE PARTS (MR7-01 ~ 07) + THE FOLLOWING

No.	Part Number	Description	Yoke	DIN
D1	MR7-D1	NBR O-Ring (AS568-112 N90)		*
D2	MR7-D2	DIN Gas Inlet		
D3	MR7-D3	NBR O-Ring (AS568-012 N90)		*
D4	MR7-D4	DIN Hand Wheel		
D5	MR7-D5	DIN Inlet Post		
6	MR7-06	Mesh Filter		*
7	MR7-07	NBR O-Ring (AS568-011 N90)		*
D8	MR7-D8	Dust Cap		

### R7 1ST STAGE SERVICE KIT

No.	Part Number	Description	Yoke	DIN
	MR7-100	Servicing Kit for R7 with Yoke Connector		
	MR7-101	Servicing Kit for R7 with DIN Connector		





## R8 1ST STAGE PARTS DIAGRAM

### R8 BALANCED DIAGRAM 1ST STAGE (YOKE)

No.	Part Number	Description	Yoke	DIN
1	YK01	Yoke Knob		
2	MR8-02	Yoke (Max. 232 BAR)		
3	MR8-03	Dust Cap		
4	MR8-04	Saddle		
5	MR8-05	Retainer Ring		
6	MR8-06	Mesh Filter	*	
7	MR8-07	NBR O-Ring 9.0X1.5 N90	*	
8	MR8-08	Yoke Retainer		
9	MR8-09	NBR O-Ring AS568-011 N90	*	
10	MR8-10	Main Housing		
11	MR8-11	Lifter		
12	MR8-12	Diaphragm	*	*
13	MR8-13	Diaphragm Washer	*	*
14	MR8-14	Spring Seat		
15	MR8-15	Spring Washer	*(x2)	*(x2)
16	MR8-16	Main Spring		
17	MR8-17	Diaphragm Cap		
18	MR8-18	Adjust Screw		
19	MR8-19	NBR O-Ring AS568-024 N70	*	*
20	MR8-20	Turret		
21	MR8-21	H. P. Seat	*	*
22	MR8-22	Valve Spring		
23	MR8-23	NBR O-Ring AS568-006 N90	*	*
24	MR8-24	NBR O-Ring AS568-013 N90	*	*
25	MR8-25	Thrust Washer		
26	MR8-26	NBR O-Ring AS568-019 N70	*	*
27	MR8-27	Turret Bolt		
28	MR8-28	NBR O-Ring AS568-012 N90	*(x2)	*(x2)
29	MR8-29	H. P. Plug		
30	MR8-30	NBR O-Ring AS568-011 N70	*(x4)	*(x4)
31	MR8-31	L. P. Plug		



## R8 1ST STAGE PARTS DIAGRAM

### R8 1ST STAGE (DIN) LESS YOKE PARTS (MR8-01 ~ MR8-09) + THE FOLLOWING

No.	Part Number	Description	Yoke	DIN
D1	MR8-D1	NBR O-Ring AS568-112 N90		*
D2	MR8-D2	DIN Retainer		
24	MR8-24	NBR O-Ring AS568-013 N90		*
D3	MR8-D3	DIN Filter		*
D4	MR8-D4	NBR O-Ring S-8 N90		*
D5	MR8-D5	DIN Hand Wheel		
D6	MR8-D6	DIN Housing		
D7	MR8-D7	NBR O-Ring 9.0X1.5 N90		*
3	MR8-03	Dust Cap		
4	MR8-04	Saddle		
	MR8-104	DIN Connector Full Parts (MR8-D1~D7 + MR8 + MR8-04 + MR8-24)		

### R8 1ST STAGE ANTI FREEZE KIT - ADDITIONAL PARTS

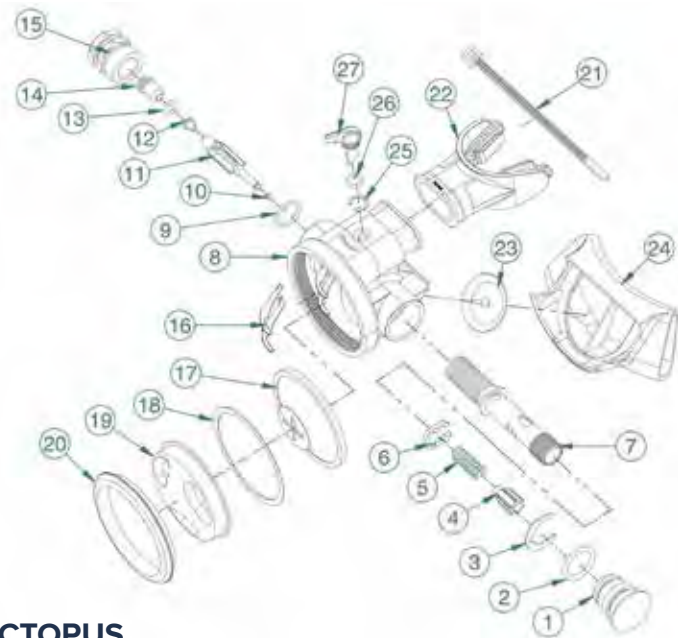
No.	Part Number	Description	Yoke	DIN
17N	MR8-17N	Diaphragm Clamp (Ice) - Replace MR8-17		
32	MR8-32	Transmitter		
33	MR8-33	Silicone Disk	**	**
34	MR8-34	EN Cap		

### R8 1ST STAGE SERVICE KIT

No.	Part Number	Description
	MR8-100	Servicing Kit for R8 with Yoke Connector (*)
	MR8-101	Kit for R8 First Stage with Yoke and Anti-Freeze Kit (*+**)
	MR8-102	Servicing Kit for R8 with DIN Connector (*)
	MR8-103	Kit for R8 1st Stage with DIN and Anti-Freeze Kit (*+**)



# O10/O20 BALANCED 2ND STAGE PARTS DIAGRAM

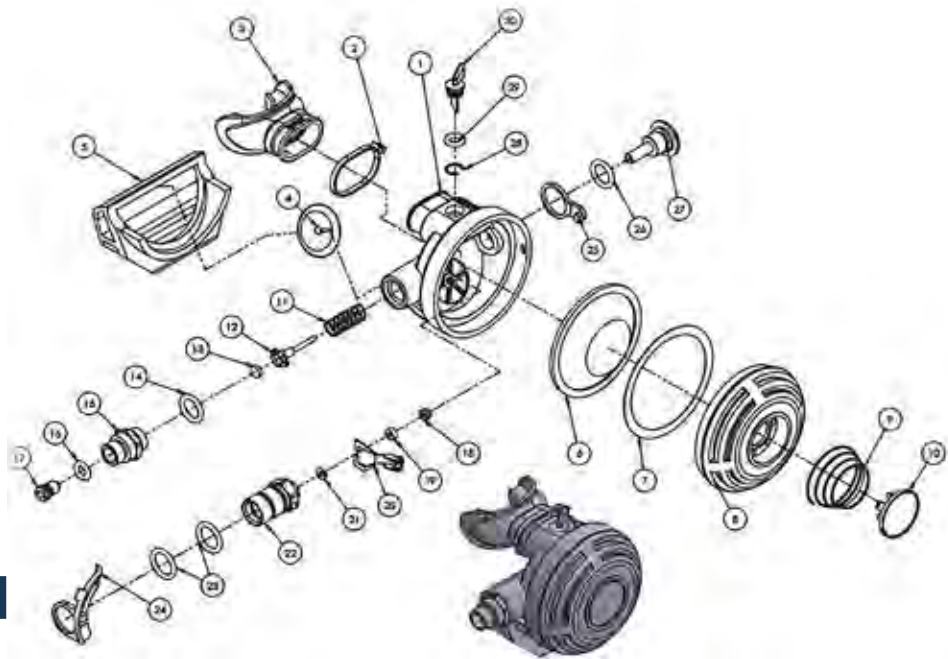


IST O10 & O20 BALANCED 2ND STAGE & OCTOPUS

No.	Part Number	Description	Service Parts
1	O1022	Adjustable Knob (O10)	
1	O2022	Side Plug (O20) - (Not shown)	
2	O1024	O-Ring (Knob)	●
3	O1020	Stainless Steel Clip	
4	O1019	Shuttle Balance Cap	
5	O1018	Spring (O10)	*
5	O2018	Spring (O20)	**
6	O1012	Lever Shim	
7	O1014	Tube	
8	O1004	Main Housing	
9	O1003	O-Ring (Nut)	●
10	O1017	O-Ring (Shuttle)	●
11	O1016	Shuttle	
12	O1015	LP Seat	●
13	O1025	O-Ring (Orifice)	●
14	O1026	Orifice	●
15	O1002	Nut	
16	O1013	Stainless Steel Lever	
17	O1008	Diaphragm	●
18	O1009	Diaphragm Washer	
19	IR1010	Purge Cover (Black)	
19	IR1010-NY	Purge Cover (Neon Yellow)	
20	O1011SV	Aluminum Ring (Silver - Octo)	
21	-	Zip Tie	
22	MP5BS	Mouthpiece (Black Silicone)	
23	O1027	Exhaust Valve	●
24	O1028	Exhaust Cover	
25	O1030	Deflector Clip	
26	O1031	O-Ring Deflector	●
27	O1032	Deflector	
	O1033	O10 Service Kit (• + *)	
	O2033	O20 Service Kit (• + **)	



# O50 2ND STAGE & OCTOPUS PARTS DIAGRAM



IST O50 2ND STAGE & OCTOPUS

No.	Part Number	Description	Service Parts
1	O5001	Main Housing	
2	-	Zip Tie	
3	MP5BS	Silicone Mouthpiece	
4	O5004	Exhaust Valve	*
5	O5005	Exhaust Tee	
6	O5006	Diaphragm	*
7	O5007	Diaphragm Washer	
8	O5008	Purge Cover	
9	O5009	Purge Spring	
10	O5010	Purge Button	
11	O5011	Valve Spring	
12	O5012	Poppet Valve	
13	O5013	Low-Pressure Seat	*
14	O5014	O-Ring	*
15	O5015	Nut	
16	O5016	O-Ring	*
17	O5017	Orifice	
18	O5018	NUT with Nylon Insert	*
19	O5019	Spacer	
20	O5020	Lever	
21	O5021	Spacer	
22	O5022	Inlet Tube	
23	O5023	O-Ring	*(x2)
24	O5024	Venturi Vane	
25	O5025	Lock Ring	
26	O5026	O-Ring	*
27	O5027	Side Plug	
28	O5028	Stainless Steel Clip	
29	O5029	O-Ring	*
30	O5030	Deflector	
	O5031	O50 Service Kit (*)	

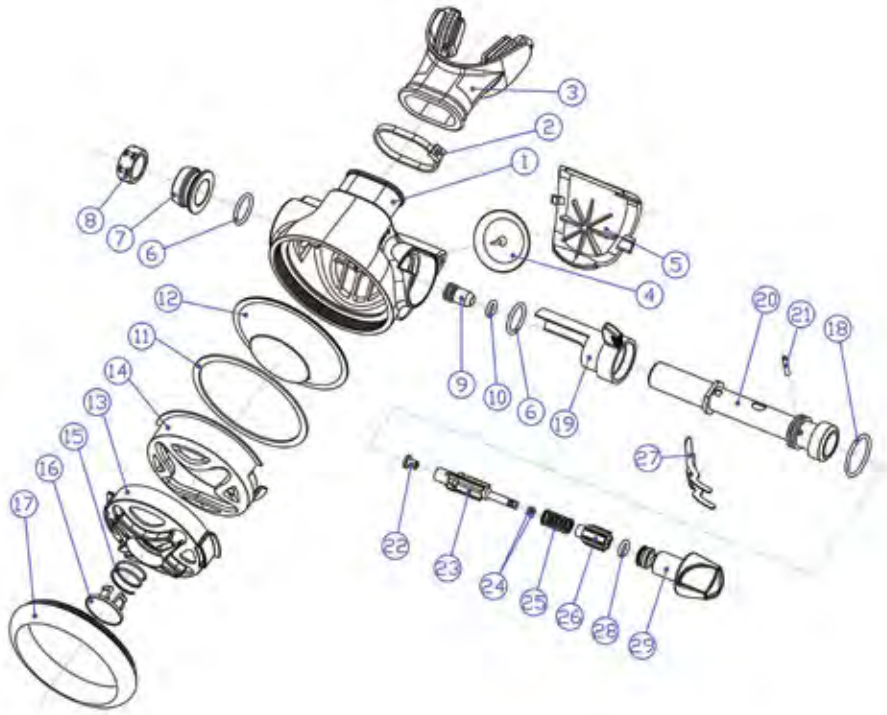




# O60 BALANCED 2ND STAGE PARTS DIAGRAM

## R8 O06 BALANCED 2ND STAGE

No.	Part Number	Description	Service Parts
1	O6001	Main Housing	
2	-	Zip Tie	
3	MP5BS	Silicone Mouthpiece	
4	O6004	Exhaust Valve	*
5	O6005	Exhaust Tee	
6	O6006	O-Ring	*(x2)
7	O6007	Spacer	
8	O6008	Nut	
9	O6009	Orifice	
10	O6010	O-Ring	*
11	O6011	Diaphragm Washer	
12	O6012	Diaphragm	*
13	O6013	Outer Purge Cover	
14	O6014	Inner Purge Cover	
15	O6015	Purge Spring	
16	O6016	Purge Button	
17	O6017	Aluminum Ring	
18	O6018	O-Ring	*
19	O6019	Pre-Dive / Dive Control	
20	O6020	Tube	
21	O6021	Pin	
22	O6022	L. P. Seat	*
23	O6023	Shuttle	
24	O6024	O-Ring	*(x2)
25	O6025	Spring	
26	O6026	Balancing Cap	
27	O6027	Lever	
28	O6028	O-Ring	*
29	O6029	Adjustment Knob	
	O6030	O60 Service Kit (*)	



## PRODUCT INDEX

A101	p.141	DT4-08	p.055	JTS-1	p.018	O20	p.052	SP2A	p.033, p.140
A107	p.141	DT5	p.054	JTS-2	p.018	O50	p.052	SP31A	p.009, p.140
A121	p.141	DT6	p.054	JT-WP-2	p.023	O60	p.051	SP32A	p.009, p.140
AF2	p.080	DT7	p.054	JT-WP-4	p.023	OL201	p.073	SP33A	p.009, p.140
AF3	p.080	F1	p.089	JT-WP-5	p.023	OL4	p.073	SP34AF	p.140
AF4	p.080	F12	p.090, p.145	JT-WP-7	p.023	OL55	p.072	SP35AF	p.140
AW-1	p.028	F20	p.091	JT-WP-8	p.023	OL55M	p.072	SP36A	p.033
AW-2	p.028	F26	p.121	K02	p.134	OL55S	p.072	SP37A	p.009, p.140
AW-3	p.028	F4	p.089	K05	p.134	OL80	p.073	SP38A	p.009, p.140
AW-4	p.028	F6	p.088	K10	p.134	ON-1	p.032	SP39A	p.009, p.140
B007	p.125	FB1	p.091	K21	p.135	OPRV1	p.032	SP41A	p.009, p.140
B400	p.103	FB7	p.091	K22	p.135	OR-4	p.053	SP42A	p.009, p.140
BB	p.139	FBK31	p.091	K25	p.133	OR-5	p.053	SP6A	p.033, p.140
BB3	p.025, p.139	FG1	p.091	K28	p.032, p.135	P1	p.086	SP7A-1	p.033
BCHH	p.046	FK30	p.087	K30	p.134	P1-1	p.086	SP8A	p.033
BCHH-3	p.046	FK31	p.090	K40	p.133	P1-2	p.086	T-1000	p.132
BE204	p.111	FK9	p.145	KB01	p.135	R7	p.050	T-101	p.131
BE205	p.111	FP01	p.087	KB06	p.135	R750	p.050	T-16	p.131
BG01	p.123	FRA01/C	p.121	KC01A	p.062, p.138	R7-DIN	p.050	T50	p.132
BG03	p.124	FRA01/F	p.121	KC12	p.138	R8	p.049	T60	p.131
BG04	p.123	FS10	p.091	LB-100-Q	p.122	R8/5	p.049	TA	p.138
BG05	p.127	FS11	p.091	LB-50-Q	p.122	R860	p.048	TA5	p.138
BGM01	p.129	FS12	p.091	LJ100	p.047	R860/5	p.049	TA6	p.138
BGM02	p.128	FS15	p.089	LJ-200	p.143	R860N-DIN/5	p.049	TA7	p.138
BGM05	p.128	FS2	p.091	LJ-300	p.047	R8DIN	p.049	TAD-1	p.024
BP-1-1	p.046	FS7	p.091	LJ-400	p.143	R8N	p.049	TAG	p.138
BP-2/1	p.022	FSK31	p.091	LP HOSES	p.035	R8N-DIN	p.049	TA-NY	p.062
BP-2/S	p.022	G36	p.152	LS12	p.132	R8N-DIN/5	p.049	TB1	p.062
BP-3	p.019	G39	p.152	LS3	p.132	RA1	p.037	TB2	p.062
BP-3H	p.024	G40	p.152	M100	p.068	RA10	p.037	TH1	p.062
BP-3H-8	p.024	GATOR POCKETS	p.041	M100-BSM	p.113	RA11	p.037	TK-1	p.026
BP-4	p.019	GJ01	p.152	M12	p.075	RA12	p.037	TP1	p.062
BP-7	p.020	GLA01-09	p.120	M14-BSM-06	p.114	RA2	p.037	TSP-2	p.024
BP-8	p.020	GL04	p.100	M200	p.068	RA3	p.037	TRIM-WP	p.041
BT0130	p.104	GP15	p.056	M200-BSM	p.113	RA4	p.037	TROPICAL-WP	p.041
BT0430	p.102	GP16	p.056	M27	p.078	RA5	p.037	VANQUISH	p.041
BT0530	p.104	GP23	p.056	M27-BS	p.065	RA6	p.037	VP3	p.026, p.062
BT0630	p.104	GP-25	p.057	M2R	p.074	RA7	p.037	VP4-P	p.026, p.062
CAP7	p.142	GP-500	p.057	M300	p.067	RA8	p.037	VSA0240	p.119
CCSJ101101	p.145	GP-9200	p.057	M37	p.078	RA9	p.037	VSH100	p.118
CF01	p.085	H3	p.142	M45	p.075	RB1	p.139	W04	p.023
CF22	p.088	H6	p.142	M50	p.074	RL-1	p.027	WB10	p.139
CF710809	p.144	H7	p.142	M55	p.072	RL-2	p.027	WB12	p.139
CG103	p.152	HB1	p.021	M59K	p.147	RL-3/N	p.027	WB15	p.139
CHSA001	p.130	HB-1L	p.021	M71	p.146	RL-4/N	p.027	WH04	p.138
CHSA002	p.130	HB2	p.021	M75	p.071	RL-5	p.027	WJ0125	p.099
CHSA003	p.130	HB-2L	p.021	M75-1	p.071	RL-6/N	p.027	WK	p.139
CHSAP-3B	p.130	HB-3	p.022	M80	p.069	RL-7/N	p.027	WK02	p.139
CHSJ01	p.130	HB-4	p.022	M88	p.070	RUFF FISH	p.040	WK03	p.139
CHSR-01	p.130	HB4-SCREW SET	p.022	M88 GS-07	p.114	S19	p.102, p.148	WK-4	p.025
CPR	p.142	HBH-1	p.021	M9	p.073	S326	p.101	WK-5	p.025
CRSL001	p.109	HBW-2	p.021	M99	p.070, p.114	S38	p.102	WP48	p.149
CS01	p.084	HD-30H	p.022	MA001	p.009	S38J	p.148	WP5	p.098
CSC101	p.152	HD6	p.077	MA002	p.009	S55	p.103	WR1	p.031, p.137
CSC204	p.152	HDN0130	p.106	MA003	p.009	S660	p.101	WR1/F	p.030, p.136
CSJ01	p.084, p.144	HDN0150	p.106	MB02	p.079	S7	p.102	WR3	p.031, p.137
CT-1	p.058	HHBP-II	p.005	MB07	p.079	S7-65	p.103	WR3/F	p.030, p.136
CT-2	p.058	HHBP-III	p.006	MB08	p.079	S780	p.101	WR4	p.031, p.137
CT-3	p.058	HHBP-V	p.006	MB09	p.079	S900	p.101	WR5	p.031, p.137
CT-4	p.058	HHBP-VII	p.007	ME55	p.076	S926	p.117	WR5-REFILL	p.031, p.137
CT-6	p.058	HTTB	p.007	ME59-CB	p.077	SB1	p.029	WR6	p.031, p.137
CT-7	p.058	HHWB-25S	p.008	ME67-CB	p.077	SB7/R	p.029	WR7	p.030, p.136
CV-01	p.111	HHWB-40S	p.008	ME80	p.076	SB8/Q-R	p.029	WS35	p.093
CWSJ0125	p.099	HHWB-BB	p.008	MGB10	p.129	SBA-1	p.122	WS80	p.092
CWSKJ0130	p.151	HHWB-BELT	p.004, p.008	MGB11	p.129	SBR2	p.011	WS805	p.092
CWSS0130	p.098	HHWB-SCREW	p.125	MGB35	p.125	SBR2-1	p.011	WS807	p.092
DB10L	p.126	HHWB-SS	p.008	MGB36	p.128	SC6	p.152	WS826	p.117
DB2	p.138	HHWB-W05	p.008	MIRA	p.039	SC7	p.152	WSH03	p.097
DB20L	p.126	HHWB-W08	p.008	MJ-111	p.146	SD1	p.140	WSH04	p.116
DB20L-B	p.126	HOOD4	p.106	MP1	p.086	SFF-1	p.032	WSK02	p.151
DB40L	p.126	HP HOSES	p.036	MP110	p.067	SFF-2	p.032	WSK03	p.150
DB6	p.138	HP1	p.036	MP112	p.064	SGT-04	p.053	WSK70	p.151
DB7	p.138	HP2	p.036	MP1-M	p.086	SGT-2	p.053	WSK80	p.150
DB8	p.138	HP4	p.036	MP2	p.086	SGT-5	p.053	WSR10	p.094
DB9	p.138	HW1	p.036	MP201	p.063	SH1	p.086	WSR50	p.095
DC2-P	p.026, p.062	IF-800	p.046	MP201-BSM	p.112	SH1P	p.086	WSS0150	p.098
DF01/S	p.141	IF-RIPTIDE	p.046	MP203	p.069	SH60	p.086	YK-03	p.026, p.059
DF02/S	p.141	IF-TECH 13/16/19/22	p.021	MP203-BSM	p.115	SH85	p.086	YK-04	p.026, p.059
DF03/S	p.141	J1000	p.044	MP208	p.066, p.115	SHN-01	p.097	YK-05	p.026, p.059
DF04/S	p.141	J1300	p.043	MP5	p.086	SK1	p.105	YK-06	p.026, p.059
DH2	p.099	J1700	p.042	MP6	p.086	SK1J	p.148	YK-07	p.026, p.059
DR-1	p.025	J800	p.045	MP7	p.086	SK2	p.105		
DR-2	p.025	JL-1	p.028	MP8	p.032	SK8	p.105		
DR-4	p.025	JL-2	p.028	MS11	p.080	SKA0130-09	p.120		
DR-5	p.025	JL-4	p.028	MS14	p.080	SKA0150-09	p.120		
DR-6	p.025	JL-5	p.028	MS17	p.080	SKA0170-09	p.120		
DR-7	p.025	JL-6	p.028	MS20	p.079	SKB	p.105		
DRING-B	p.040	JT-30	p.016	MS25	p.080	SMB-21/N	p.010	600PK	p.060
DRING-S	p.040	JT-30H	p.014	MS80	p.080	SMB-42/N	p.010	300PK	p.060
DS20	p.110	JT-30D	p.014	MUTINEER	p.038	SMB-BUNGEE/L	p.011	170PK	p.060
DS46	p.108	JT-31H	p.014	MV1	p.007	SMB-BUNGEE/S	p.011	300PK-N	p.060
DS56	p.109	JT-31D	p.014	N1	p.036	SMB-POUCH	p.011	170PKX	p.060
DSK46	p.149	JT-40	p.017	N3	p.036	SN104	p.081	003DGS	p.061
DSK48	p.149	JT-40D	p.014	N4	p.036	SN203	p.081	094X	p.061
DT1	p.054	JT-40H	p.014	N5	p.037	SN204	p.082	910S	p.061
DT2	p.054	JT-41D	p.014	N6	p.037	SN301	p.083	920C	p.061
DT4	p.054	JT-41H	p.014	N7	p.037	SN36	p.083	961	p.061
DT4-01	p.055	JT-65	p.017	NC1	p.107	SN60	p.082	963	p.061
DT4-02	p.055	JT-65D	p.012	NC1-SET	p.107	SN85	p.083	971	p.061
DT4-OT4	p.055	JT-65H	p.012	NCL-1	p.107	SNK08	p.147	973	p.061
DT4-05	p.055	JTA-1	p.018	NCL-2	p.107	SNK205	p.147	974	p.061
DT4-07	p.055	JTA-2	p.018	O10	p.051	SP25A	p.033	BAG	p.061

### SPAREAIR



IST DIVING SYSTEM

---

[WWW.ISTDIVINGSYSTEM.COM](http://WWW.ISTDIVINGSYSTEM.COM)

1652 W ORANGE GROVE AVE,  
POMONA, CA 91768

1-800-298-2688

[INFO@ISTDIVINGSYSTEM.COM](mailto:INFO@ISTDIVINGSYSTEM.COM)

---